



# BARK

*Wabi Sabi 2.0*



**WELSPUN**  
FLOORING

## Beauty in Imperfection

## *Wabi Sabi 2.0*

Wabi Sabi is a Japanese world view that finds beauty in imperfection...kind of sums up every aspect of our lives, doesn't it? It's about finding harmony in dissonance and order in chaos.

And it has given shape to our current collection of flooring. With fade resistant and stain resistant properties, these truly modern carpet tiles are perfect for offices and commercial spaces.





## Bark

Taking the philosophy of Wabi-Sabi a step forward, the Bark Collection showcases designs that are inspired by the precious cache of wisdom that values tranquility, harmony and beauty in imperfection.

Like how no two barks of a tree are the same, each bark is unique due to its imperfect cracks and designs, this collection celebrates these intricate natural designs and translates the same into beautiful textures and patterns. When designs that are so inspiring, the Bark Collection can truly embrace the perfections of being imperfect.



IRON | AC: CT001074



CARROT | AC: CT001073



IRON | AC: CT001060



BULLION | AC: CT001059



IRON | AC: CT001064



SLIME | AC: CT001063



STORM | AC: CT001068



SEA WATER | AC: CT001067



RHINO | AC: CT001057



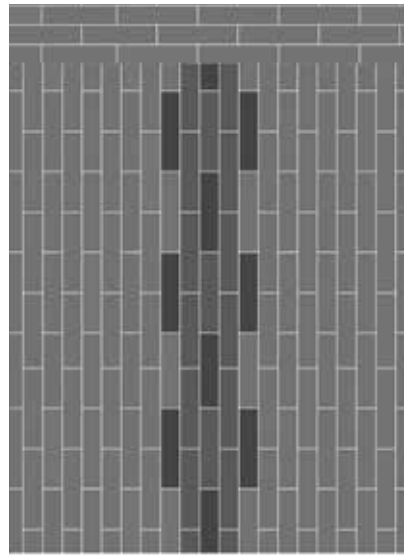
PEWTER | AC: CT001056



STORM | AC: CT001058



ARTICLE CODE | COLOR  
CT001057 | RHINO  
CT001074 | IRON  
CT001073 | CARROT



CARROT | AC: CT001073



IRON | AC: CT001074

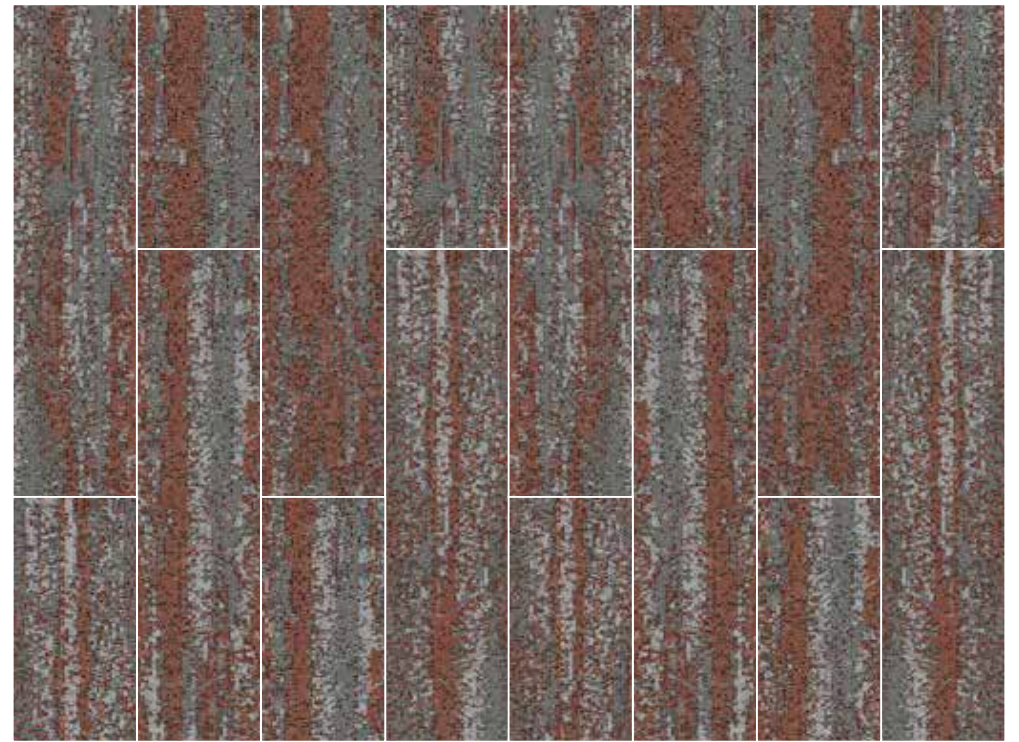


RHINO | AC: CT001057

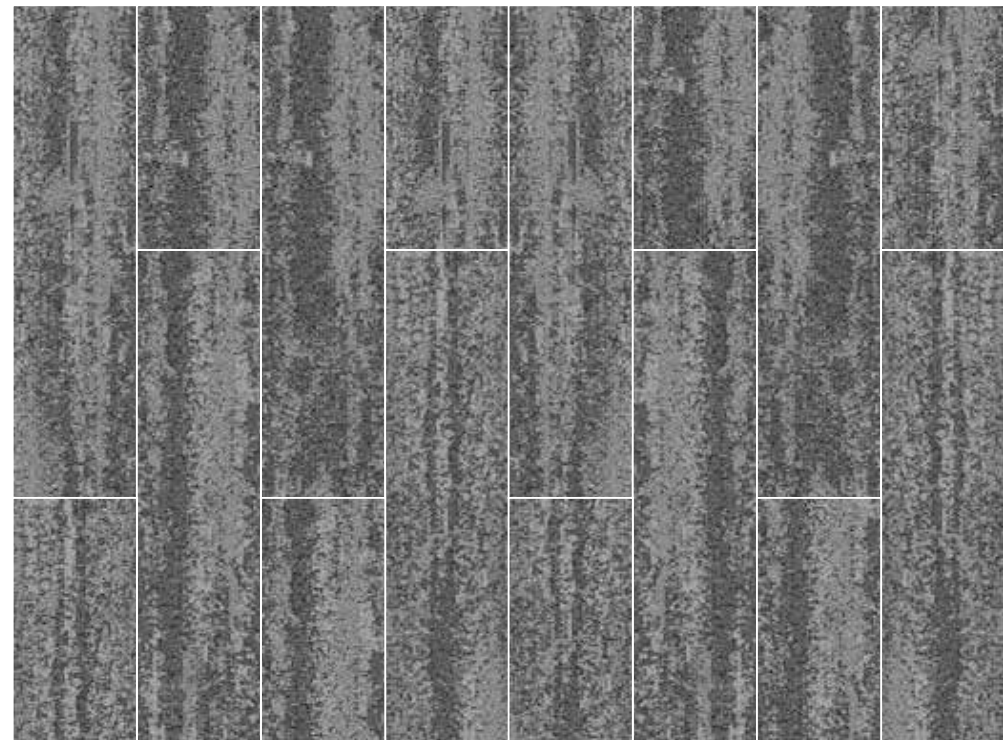
A

B

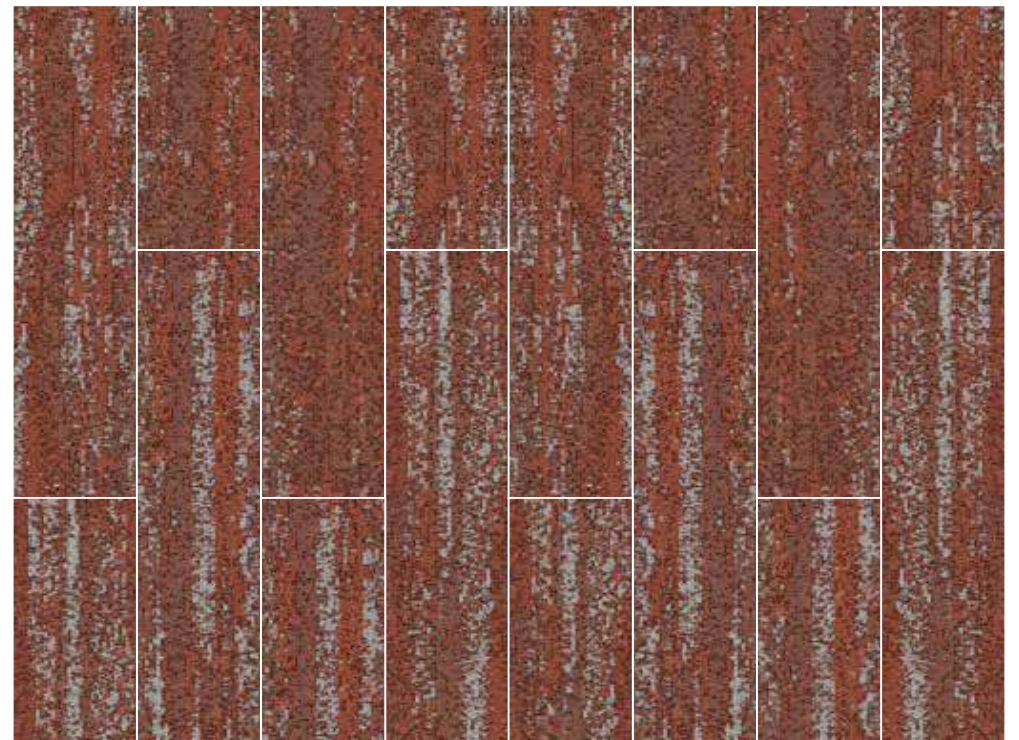
C



IRON | AC: CT001074



RHINO | AC: CT001057



CARROT | AC: CT001073



ARTICLE CODE | COLOR  
CT001058 | STORM  
CT001060 | IRON  
CT001059 | BULLION



A

BULLION | AC: CT001059



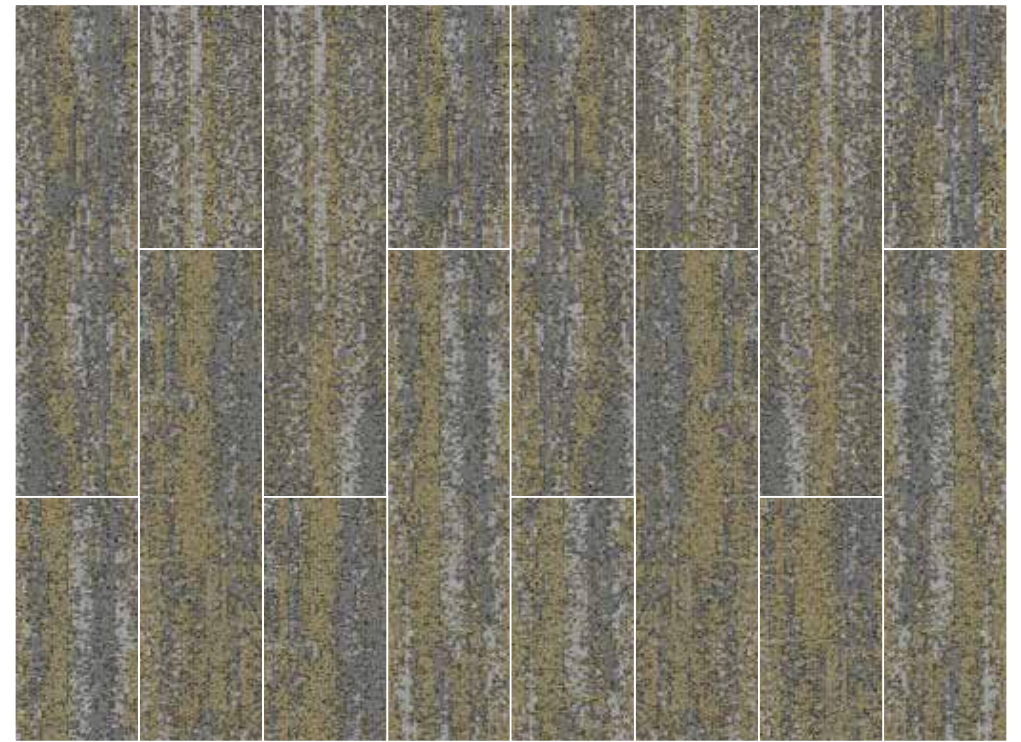
B

IRON | AC: CT001060

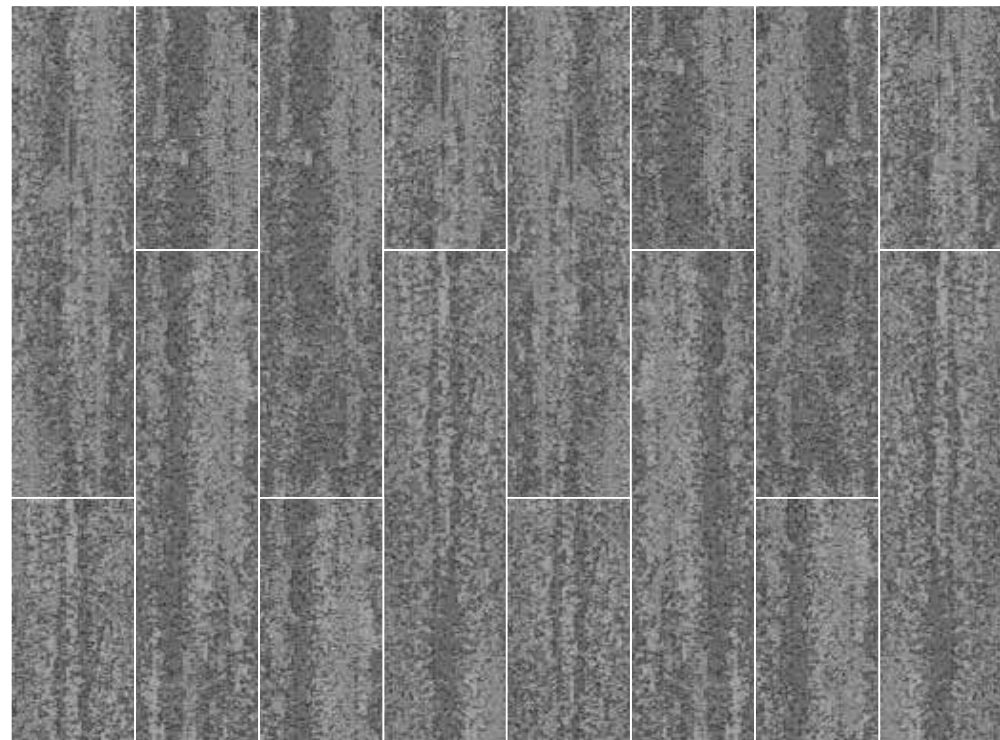


C

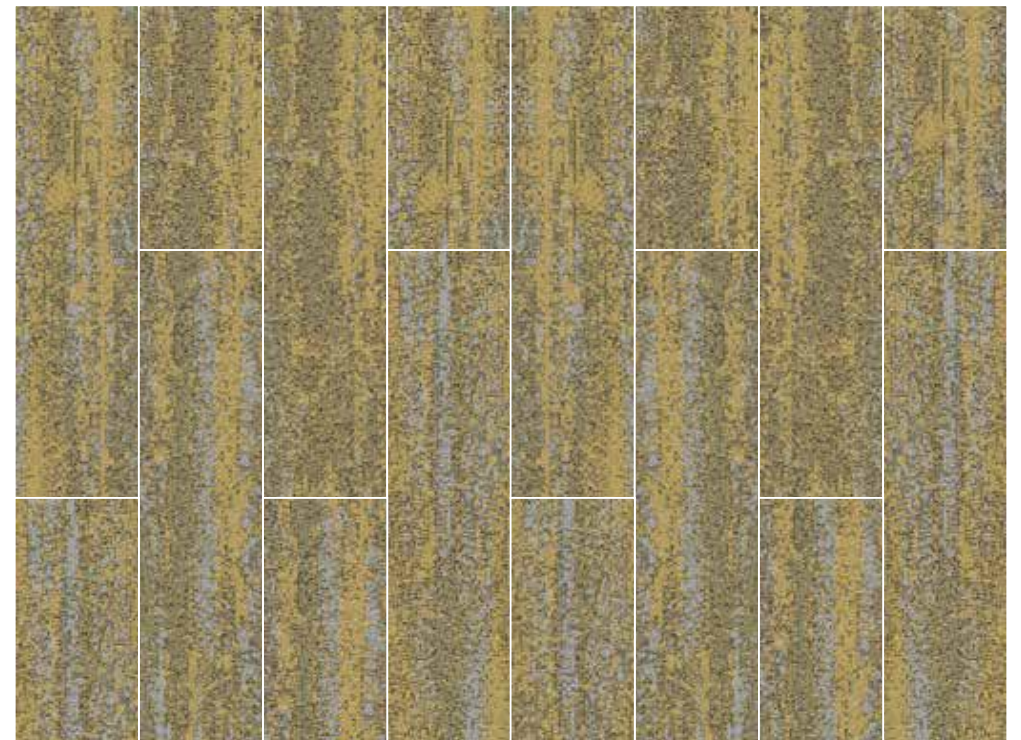
STORM | AC: CT001058



IRON | AC: CT001060



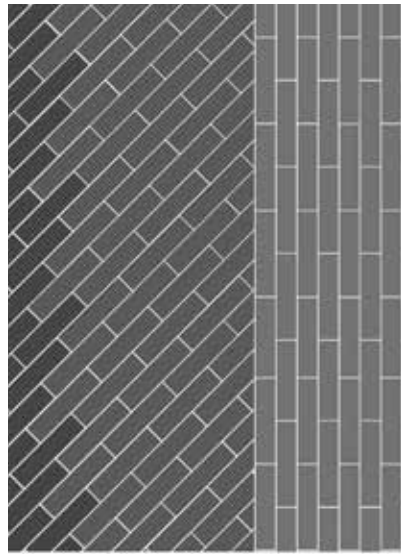
STORM | AC: CT001058



BULLION | AC: CT001059



ARTICLE CODE | COLOR  
CT001058 | STORM  
CT001068 | STORM  
CT001067 | SEA WATER



A

SEA WATER | AC: CT001067



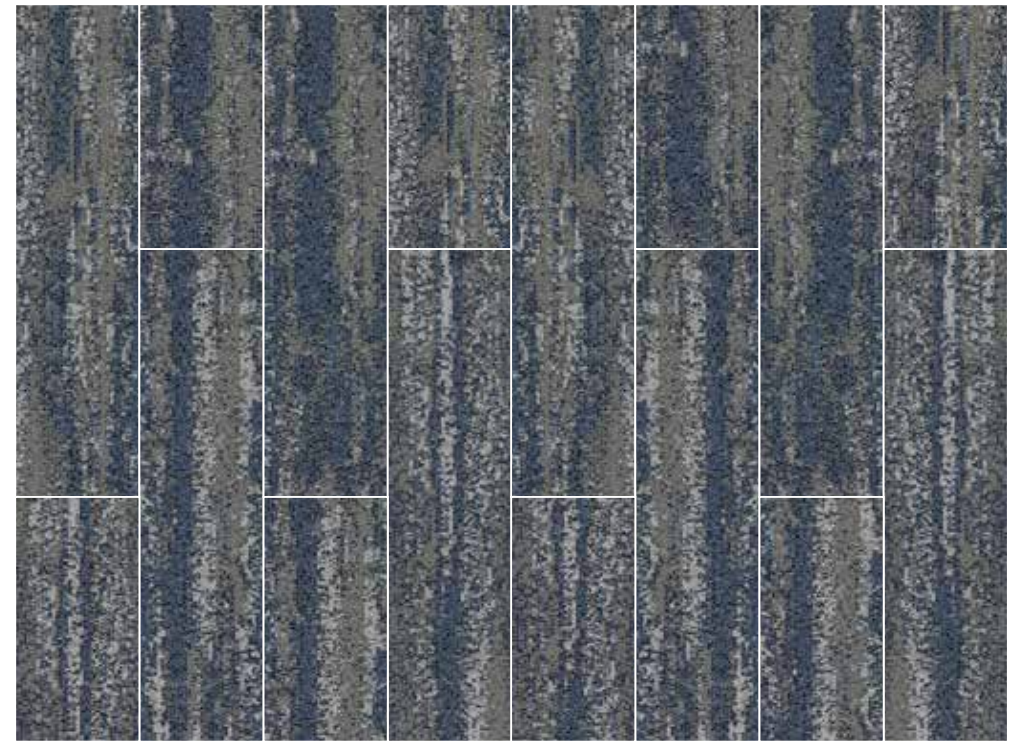
B

STORM | AC: CT001068

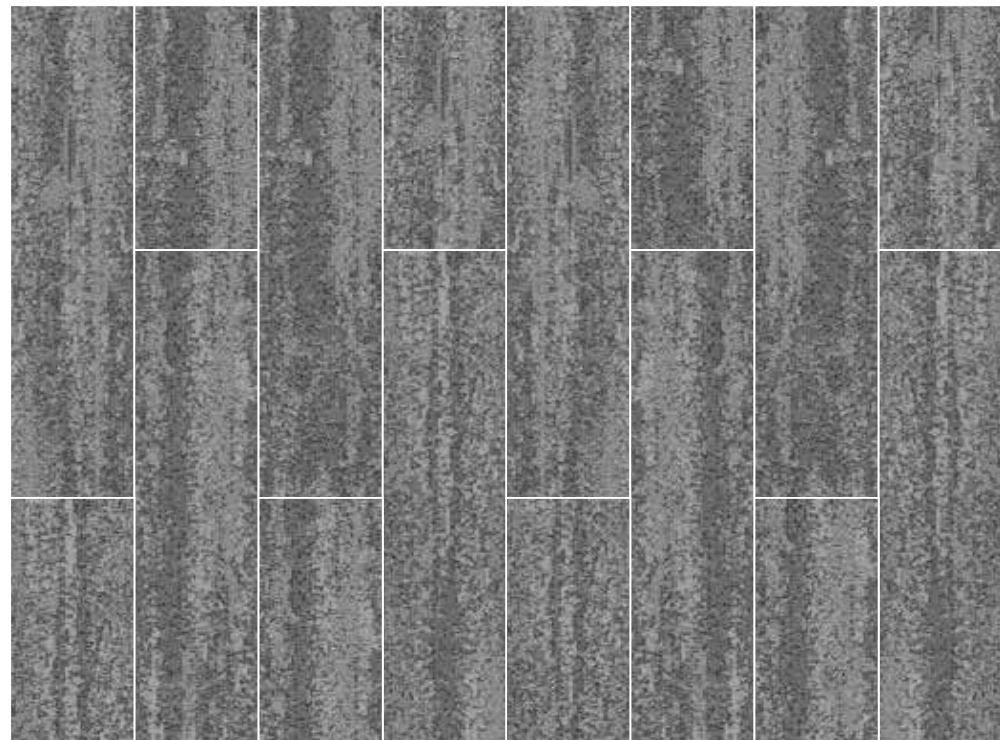


C

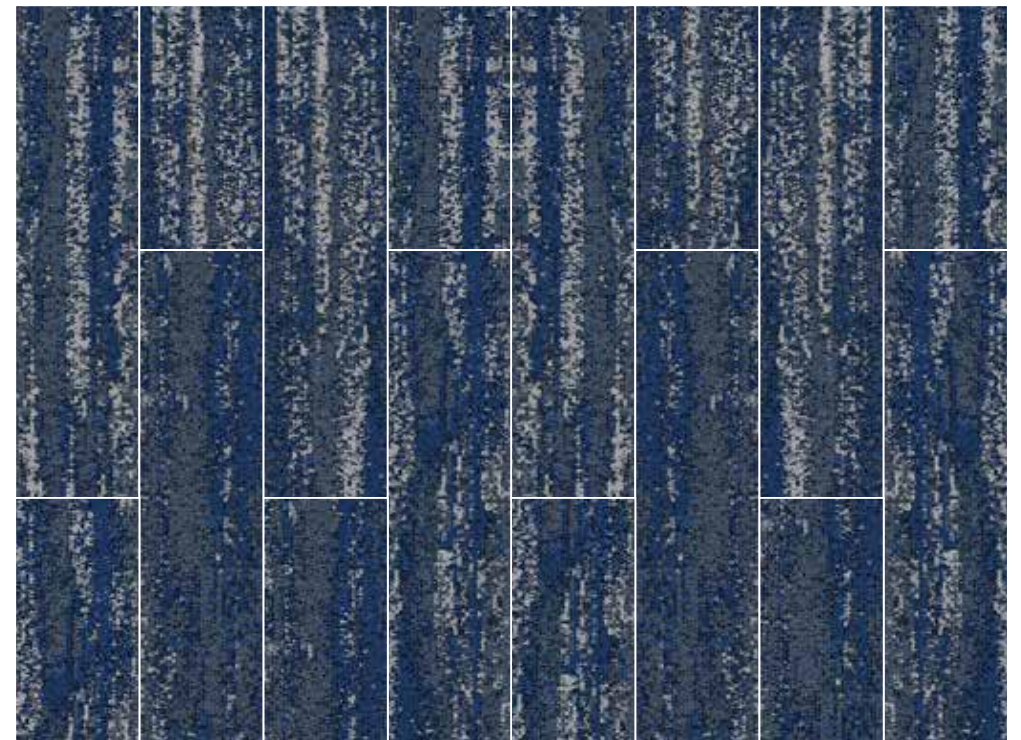
STORM | AC: CT001058



STORM | AC: CT001068



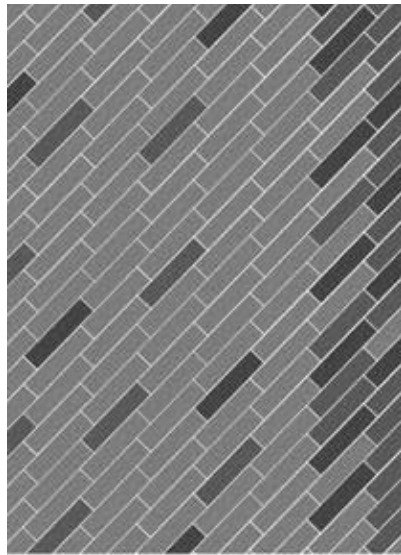
STORM | AC: CT001058



SEA WATER | AC: CT001067



ARTICLE CODE | COLOR  
CT001057 | RHINO  
CT001064 | IRON  
CT001063 | LIME



LIME | AC: CT001063



IRON | AC: CT001064

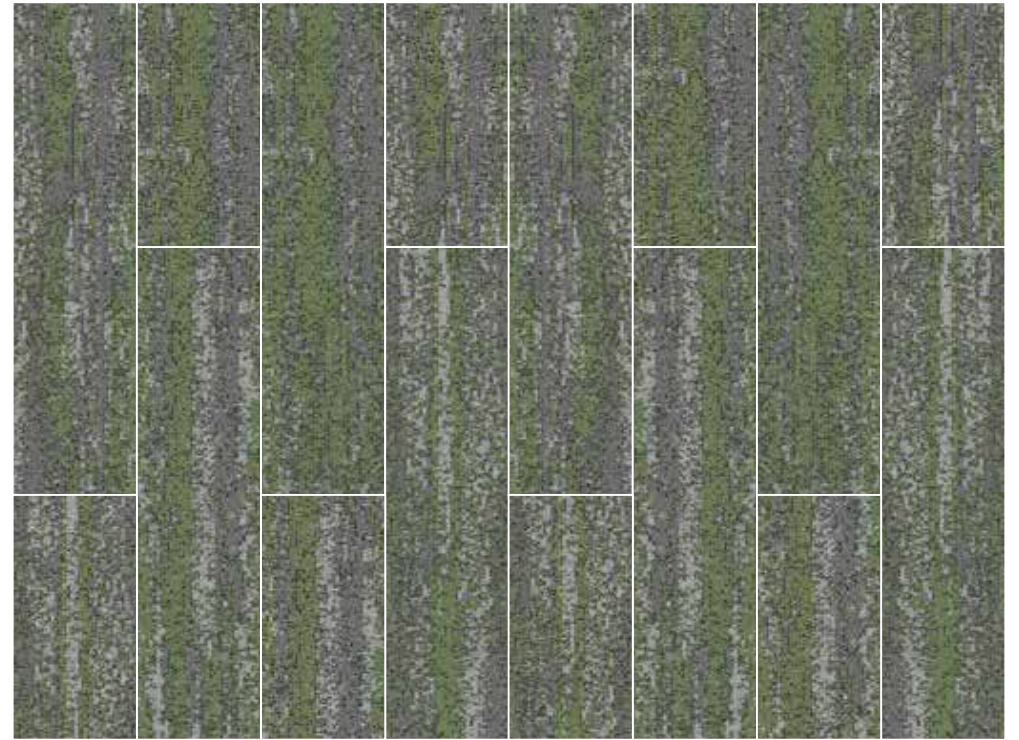


RHINO | AC: CT001057

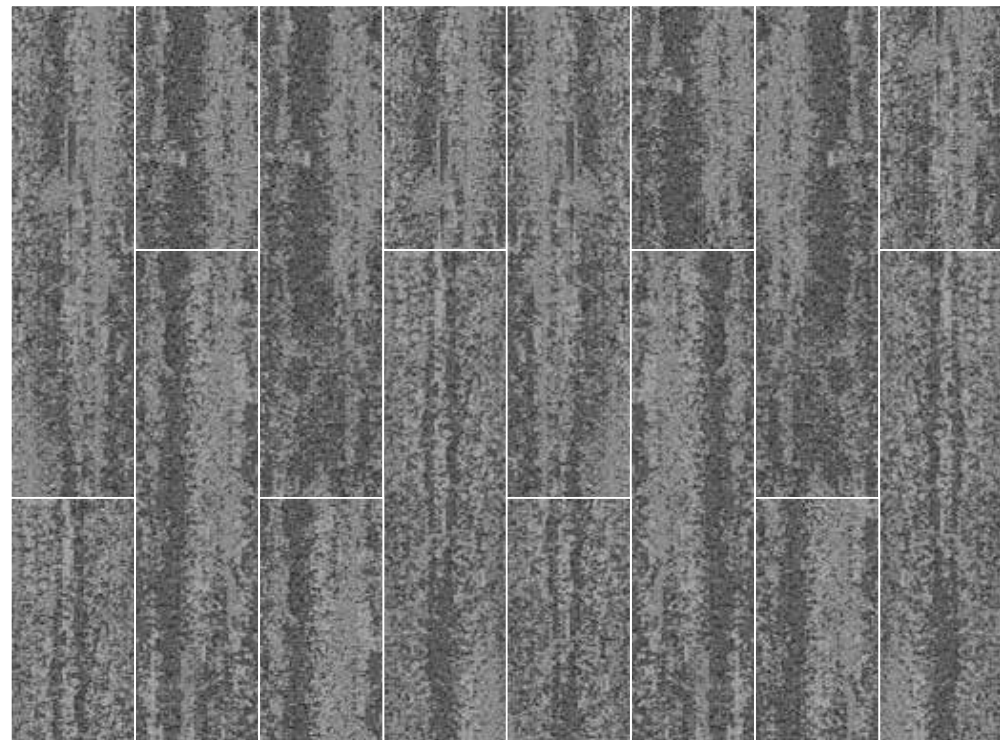
A

B

C



IRON | AC: CT001064



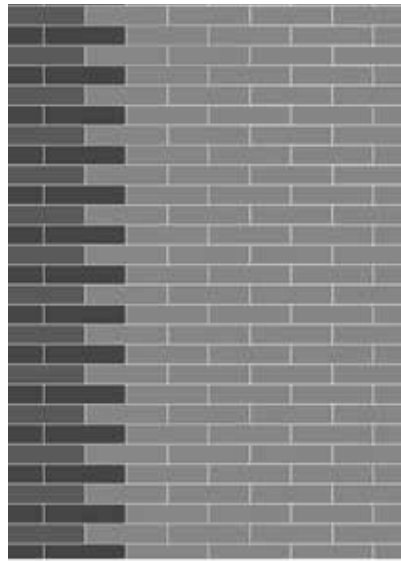
RHINO | AC: CT001057



LIME | AC: CT001063



ARTICLE CODE | COLOR  
CT001058 | STORM  
CT001068 | STORM  
CT001067 | SEA WATER



SEA WATER | AC: CT001067



STORM | AC: CT001068

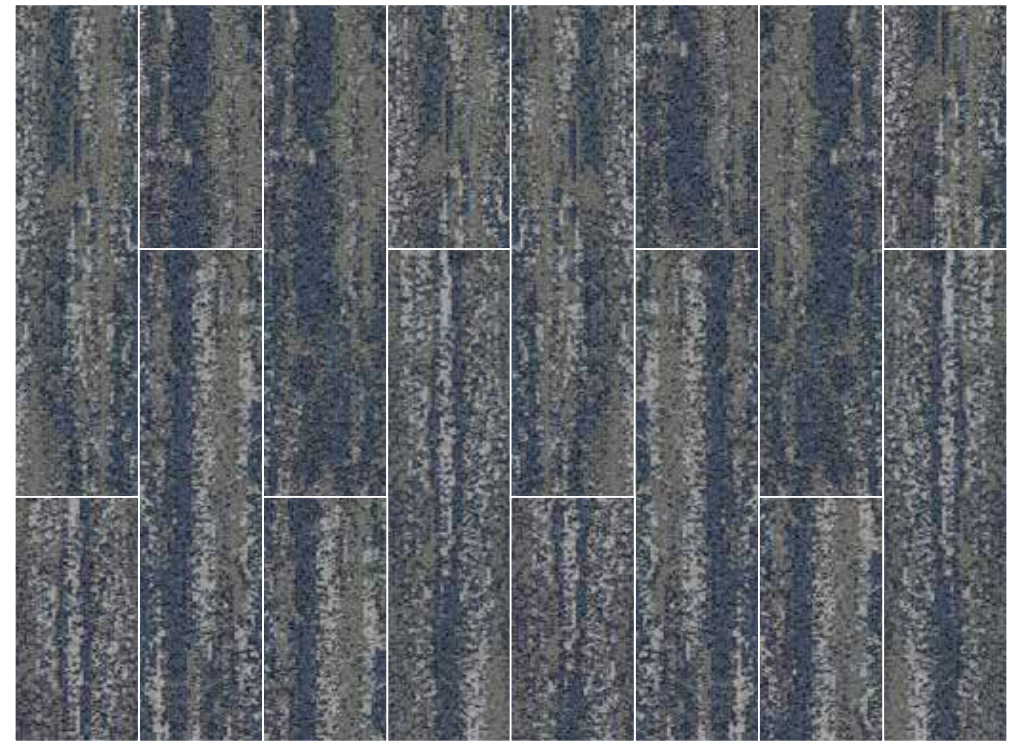


STORM | AC: CT001058

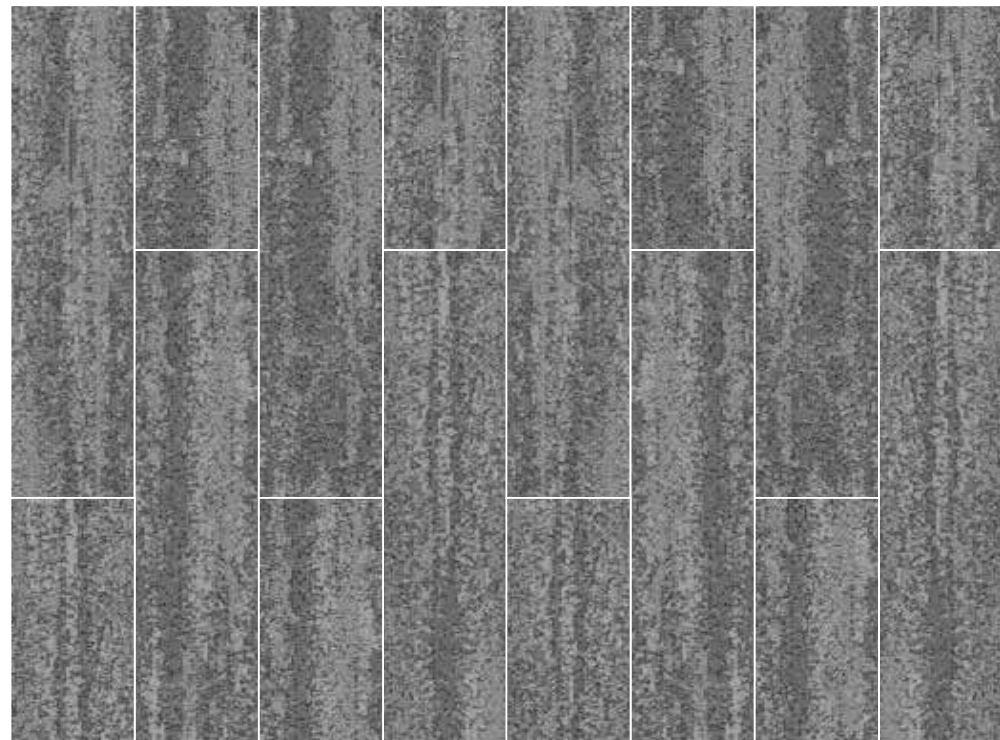
A

B

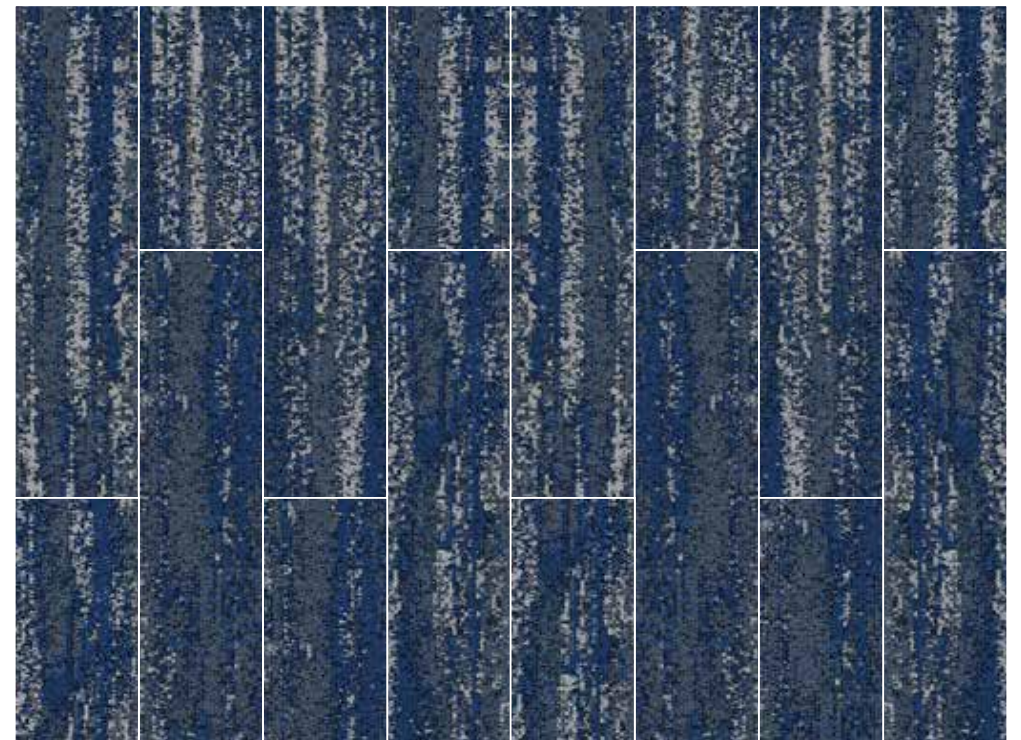
C



STORM | AC: CT001068



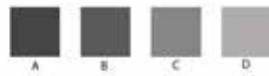
STORM | AC: CT001058



SEA WATER | AC: CT001067



ARTICLE CODE | COLOR  
CT001060 | IRON  
CT001059 | BULLION



A

STORM | AC: CT001058



B

RHINO | AC: CT001057



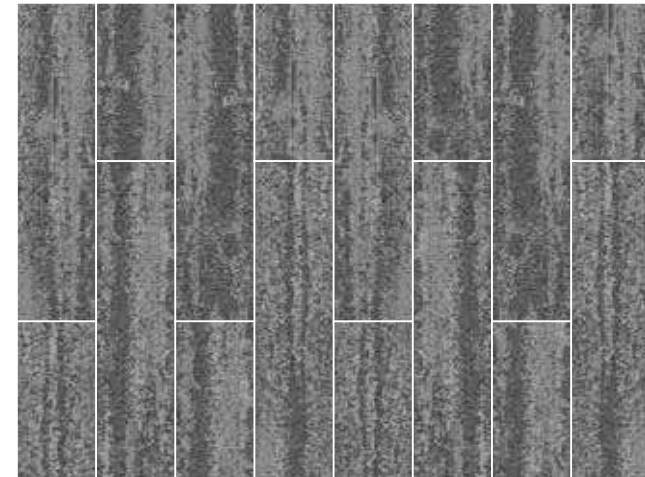
C

IRON | AC: CT001060

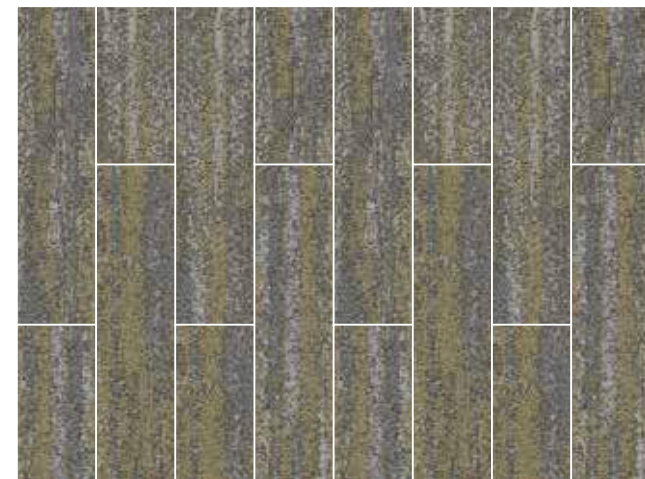


D

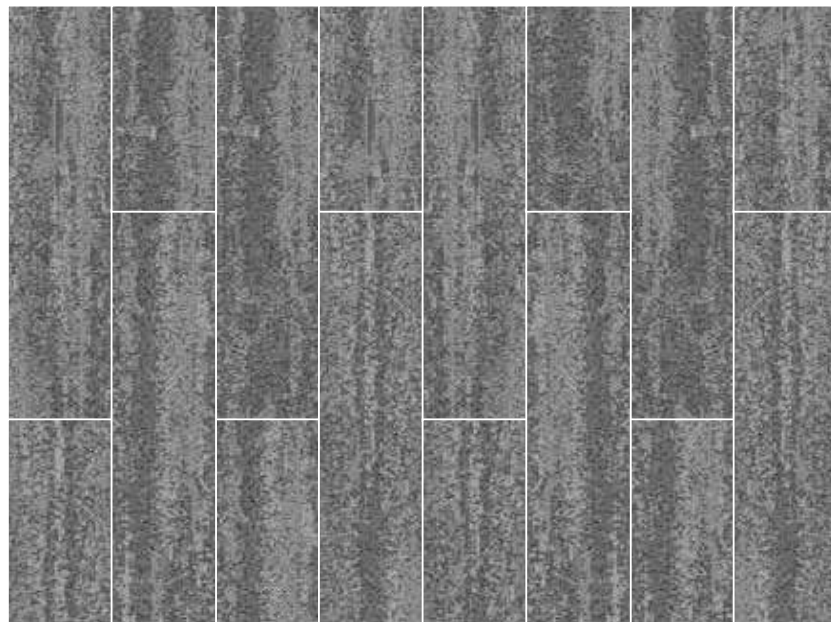
BULLION | AC: CT001059



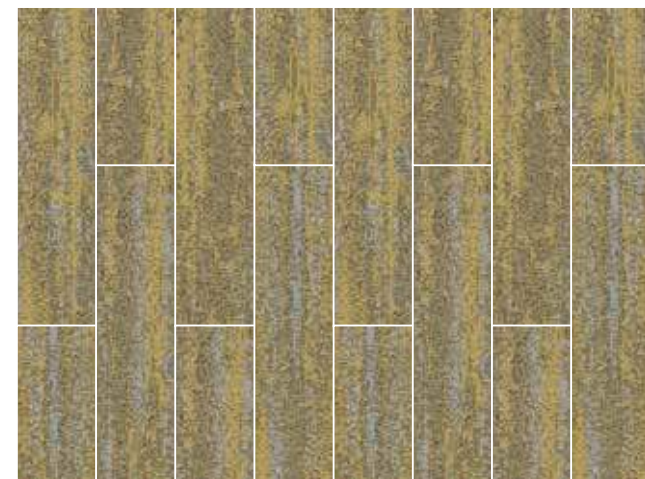
RHINO | AC: CT001057



IRON | AC: CT001060



STORM | AC: CT001058

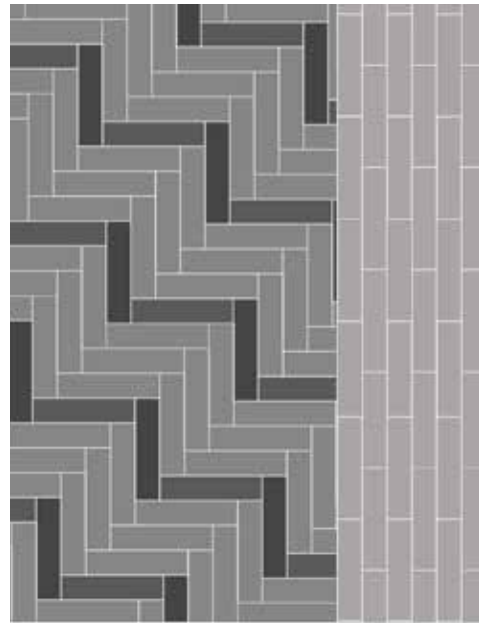


BULLION | AC: CT001059



**ARTICLE CODE | COLOR**  
CT001058 | STORM  
CT001060 | IRON  
CT001059 | BULLION

**DESIGN CODE | COLOR NAME**  
SHF00174 | COWBOY OAK



A

BULLION | AC: CT001059



B

IRON | AC: CT001060



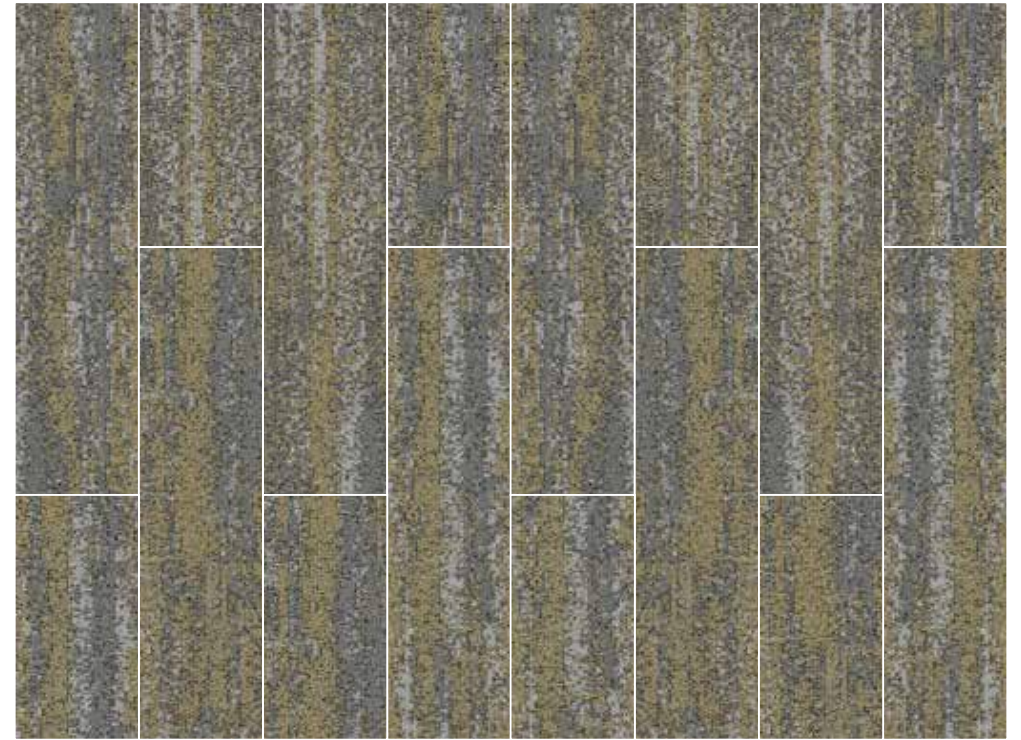
C

STORM | AC: CT001058

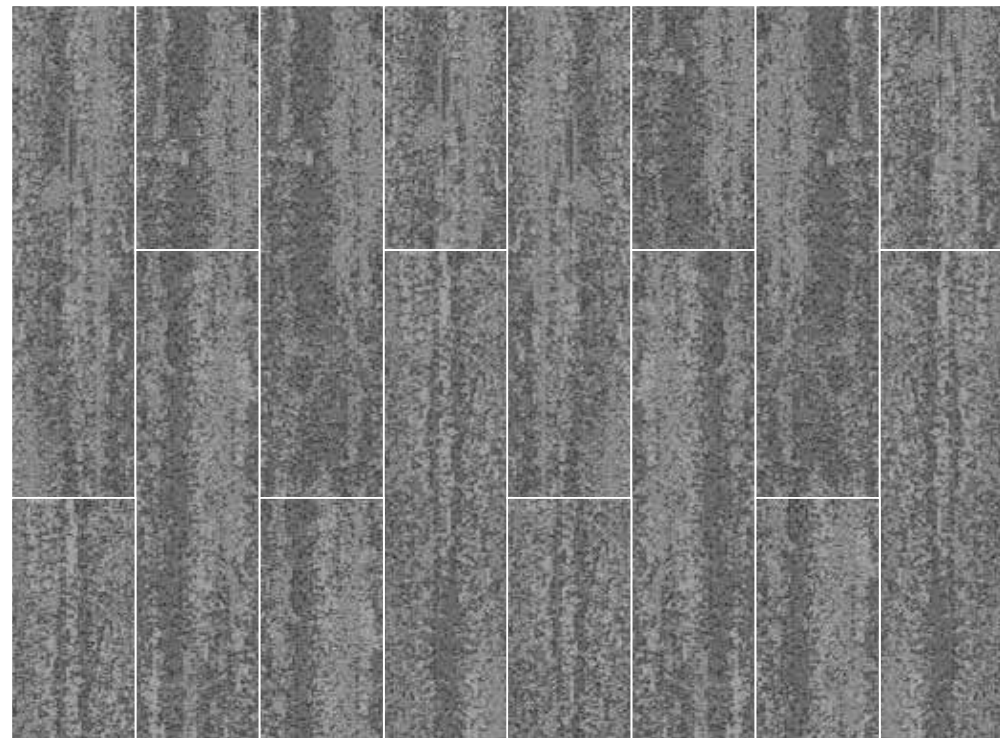


D

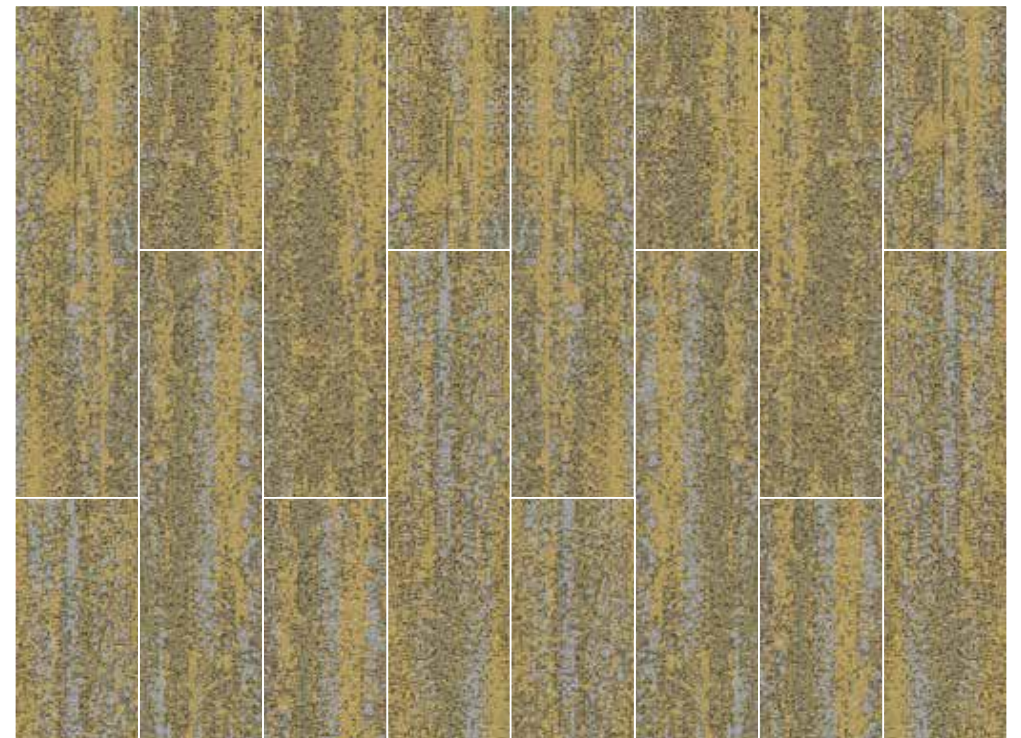
COWBOY OAK | DC: SHF00174



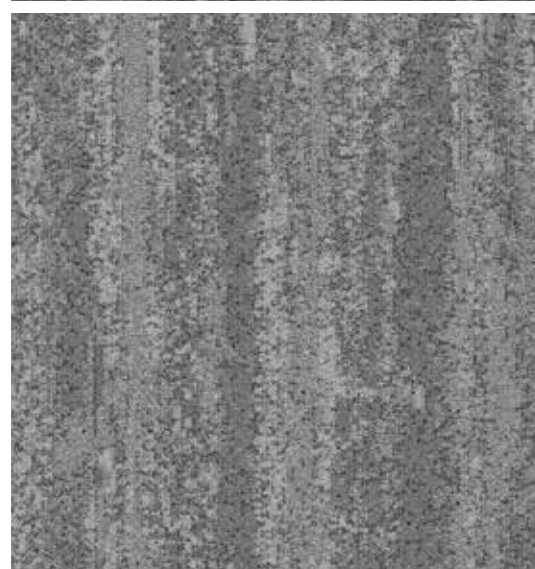
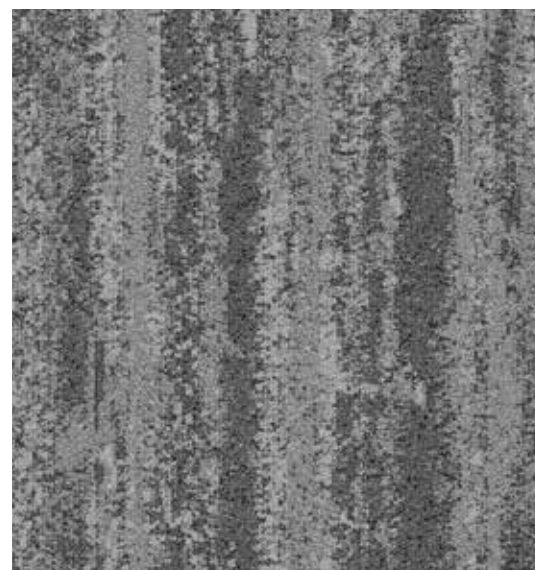
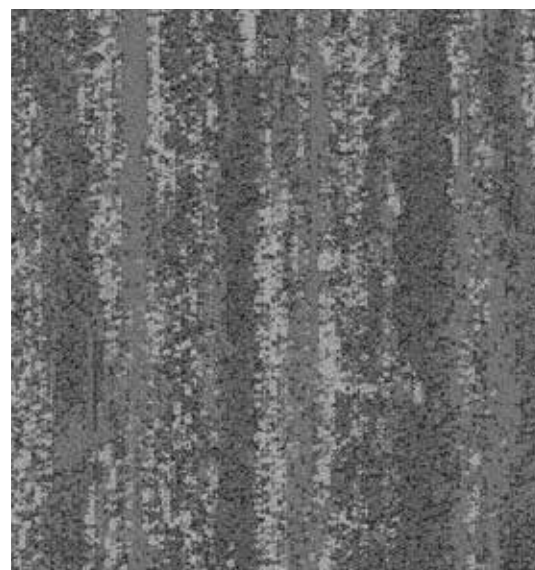
IRON | AC: CT001060



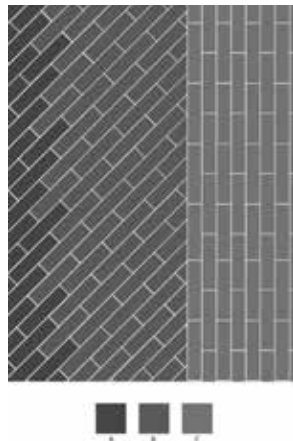
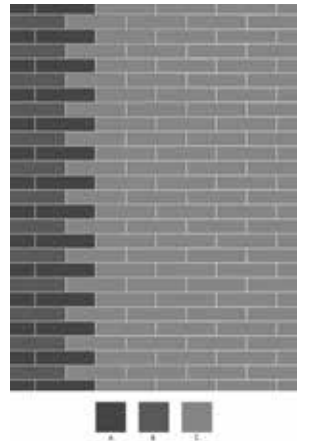
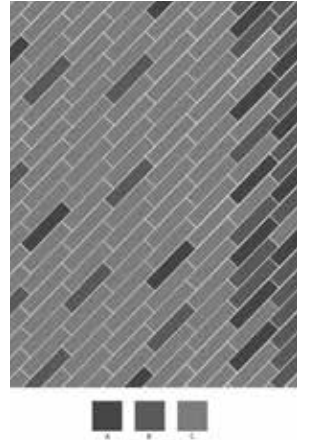
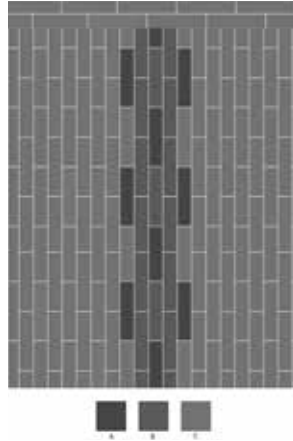
STORM | AC: CT001058



BULLION | AC: CT001059

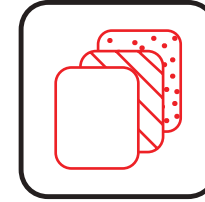


# LAYING PATTERNS





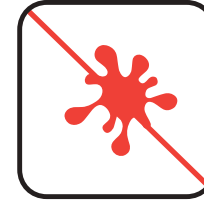
## WELSPUN CARPET TILES ADVANTAGES



Multiple Design Possibilities



Ideal For Heavy Foot Traffic



Stain Protect



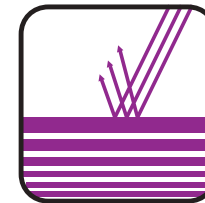
Easy To Maintain



Easy To Install



Less Wastage During Installation



Fade Resistant



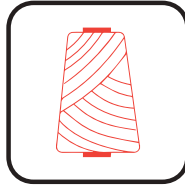
Made in India



Less Lead Time

PRODUCT SPECIFICATIONS	
Yarn	NY6+™
Machine / Gauge	1/10 Color point
Tufted Weight(Oz)	32
Density	Min. 10,700
Total Thickness(mm)	5 to 6
Pile Thickness(mm)	Upto 2.5
Backing Type	Welspun Ecolite™
SPI	9
Size(cm)	Plank (25X100)

## TRADEMARKS & TECHNOLOGIES



### NY6+™

For colors those don't fade out, Welspun Flooring's Ny6+™ is made up of a highly resilient fiber that is known for its superior color retention, strength, stain and fade resistance. With all this, your floor always retains its beauty come what may.



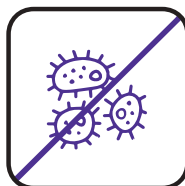
### Welspun Ecolite™

Welspun Ecolite™ is a lightweight backing that not only reduces the overall weight significantly, but ensures a 40% less environmental footprint than traditional carpets. Despite that, this backing retains the highest performance standards.



### HealthyFloor™ (Optional)

We also have carpet tile options with **antiviral property**. Tested and certified by ResInnova Labs, we are the first company in India to offer antiviral carpet tiles. It eliminates 99.68% of virus thanks to a special coating of silver ion and titanium oxide.



### GermiShield™

Health of our loved ones come first. To fight against these invisible forces of nature, these tiles come with innovative **GermiShield™**. This antimicrobial technology, restricts the growth of harmful germs or molds on the floor.



### Comfortile™ (Optional)

With Comfortile™ backing, our tiles come with a customized felt-back that not only offers great underfoot comfort, but also sound absorption. Comfortile™ provides extra levels of protection and support for high levels of acoustic and ergonomic support.

## TEST REPORT SUMMARY

Test Name	Method	Test Name	Method
Anti Microbial Treatment	AATCC 174 (Part II & III)	Colour fastness to bleach	AATCC 6
Delamination	ASTM D 3936	Static Electricity	AATCC 134-1996
Tuft Bind	ASTM 1335-67	Anti Static	ANSI/ESD S 7.1
Dimensional stability	ASTM D 7570	Castor Chair	DIN 54324
Pile weight	ASTM D 5848-07	Hexapod	ASTM D 5252-15
Pile density	ASTM D 5848-07	Static Coefficient	ASTM C 1028
Total thickness	ASTM D 6988-08	Dimensional stability (Aachen test)	DIN-STD-54318/ITTS-004
Pile height	ASTM D 5823-05a	Anti Soil	ASTM D 6540-05
Gauge	ASTM D 5793 - 13	Shampoo Fastness	AATCC 138
Tuft density	ASTM D 5848	Water Fastness	AATCC 107
Flammability (Pill Test)	ASTM D 2859	Velcro-Loops	ITTS 112
Flammability (Radiant Panel)	ASTM E 648-06	Heavy Traffic test (Walk test)	ASTM 6119-03
NBS Smoke Density (Flaming)	ASTM E 662-06	Sound transmission	ASTM C 423-17
Lightfastness	AATCC 16 E	Sound Absorption	ASTM C 423-17
Colour fastness to Ozone	AATCC 129	Static Loading	ISO 015/3415
Colour fastness to NO <sub>2</sub>	AATCC 164-2008	Green Carpet (VOC)	ASTM D 5116
Crocking Dry and Wet	AATCC 165-2008	Acoustic- Nylon	BS EN ISO 354
Stain fastness	AATCC 175-2008/ITTS 002	Thermal Resistance	ASTM C 518

## CERTIFICATIONS



# Thank You



**WELSPUN**  
FLOORING

To transform your flooring, just get in touch with us:

**Contact us:**

☎ 1800 120 1161

✉ [contact\\_flooring@welspun.com](mailto:contact_flooring@welspun.com)

**Address:**

Welspun Global Brands Ltd,  
Survey No 190, Chandanvelly, Near Hythabad, Shabad Mandal,  
Ranga Reddy District, Telangana 501503, India

[www.welspunflooring.com](http://www.welspunflooring.com)

\*Colors are indicative. Please refer actual product for exact color