



Relay 2.0



WELSPUN
FLOORING



GO BOLD GO RELAY

Bold, full of life and energy.
That was our inspiration for our Relay Collection.
Bright colours, bold lines all of which shout activity and energy.
Ideal for your office spaces which radiate a sense of dynamism.

Design Name : Shift



ORANGE | AC : CT000076



ELECTRIC BLUE | AC : CT000075



SEA WATER | AC : CT001148



BULLION | AC : CT001149



LIME | AC : CT001151



MIST | AC : CT001153



IRON | AC : CT001152

Design Name : Passage



ORANGE | AC : CT000085



ELECTRIC BLUE | AC : CT000084



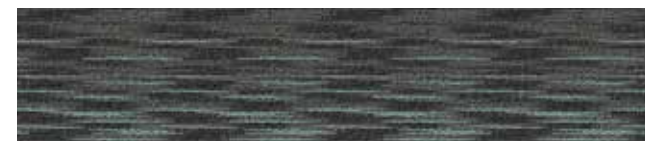
SEA WATER | AC : CT000167



BULLION | AC : CT000168



LIME | AC : CT000170



MIST | AC : CT000171

Design Name : Wave



IRON | AC : CT000173



www.welspunflooring.com

COLORWAYS



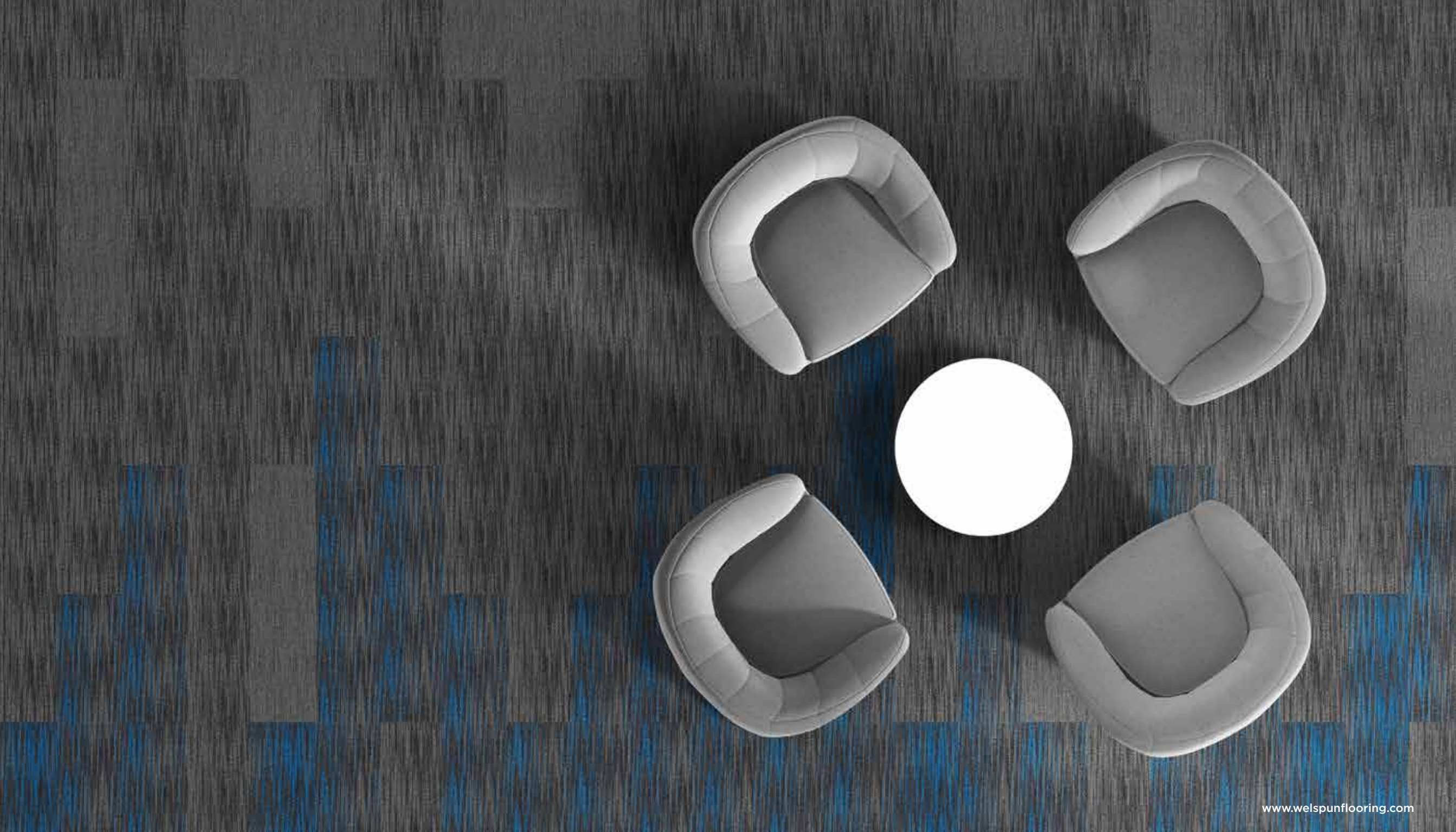
ORANGE | AC : CT000076



ORANGE | AC : CT000085



IRON | AC : CT000173



www.welspunflooring.com

COLORWAYS



ELECTRIC BLUE | AC : CT000084



IRON | AC : CT001152



IRON | AC : CT000173



www.welspunflooring.com

COLORWAYS



BULLION | AC : CT000168



IRON | AC : CT000173



www.welspunflooring.com

COLORWAYS



SEA WATER | AC : CT001148



MIST | AC : CT001153



MIST | AC : CT000171



www.welspunflooring.com

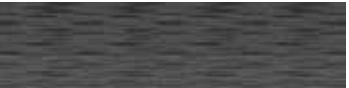
COLORWAYS



ELECTRIC BLUE | AC : CT000084



BULLION | AC : CT000168



IRON | AC : CT000173



www.welspunflooring.com

COLORWAYS



MIST | AC : CT001153



MIST | AC : CT000171



IRON | AC : CT001152



IRON | AC : CT000173



www.welspunflooring.com

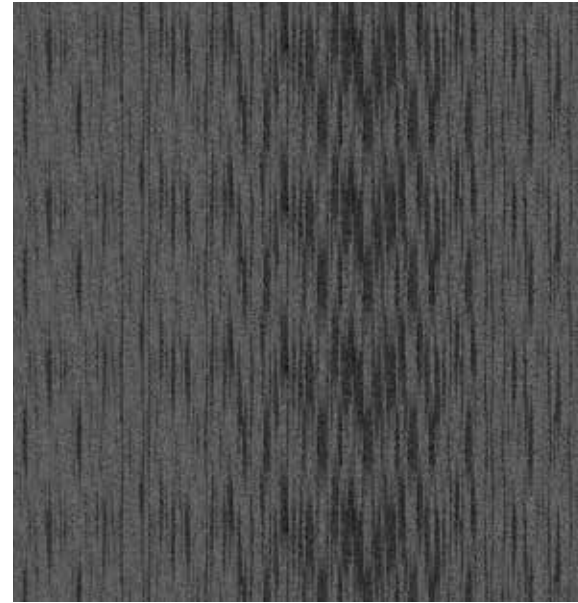
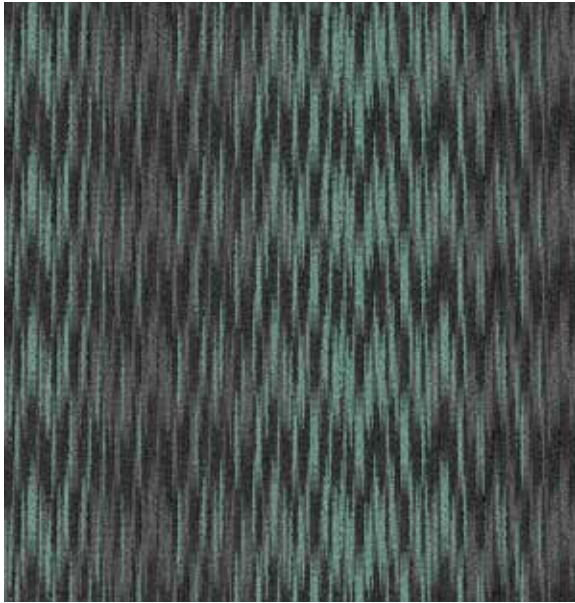
COLORWAYS



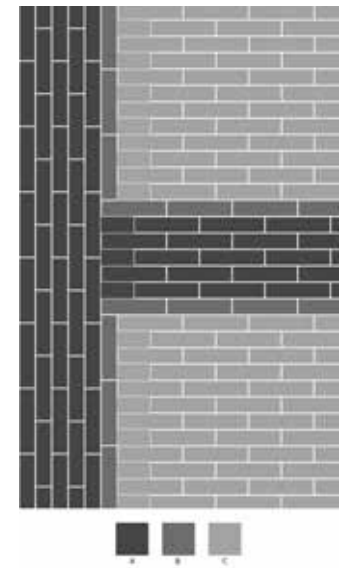
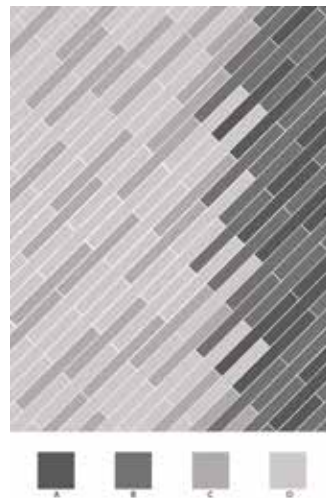
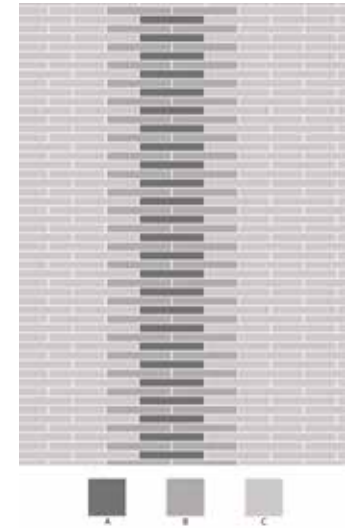
SEA WATER | AC : CT001148

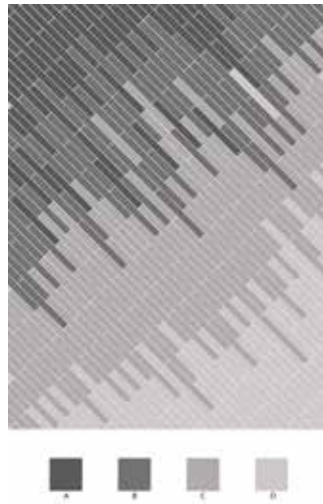
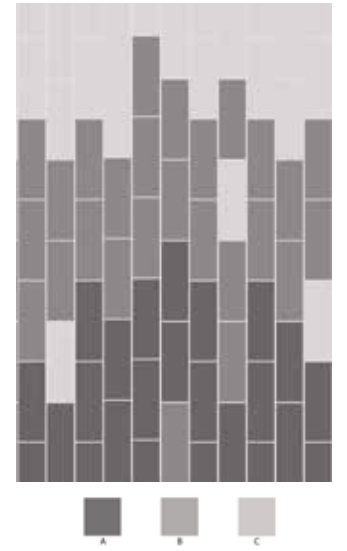
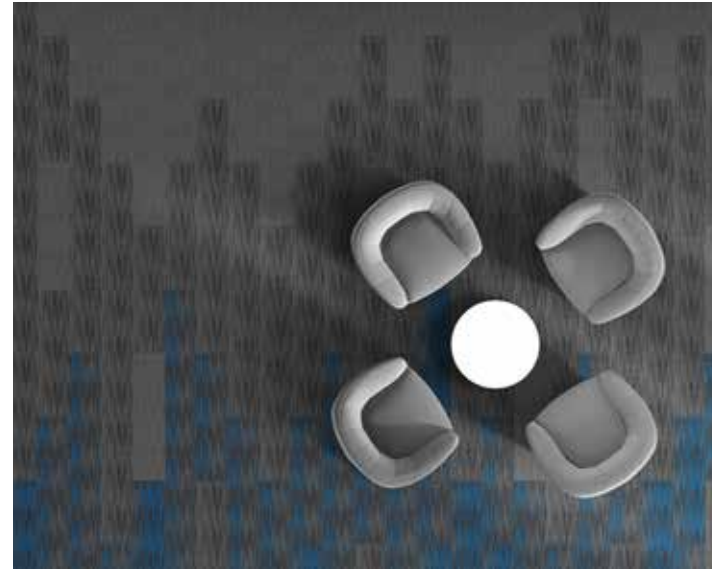
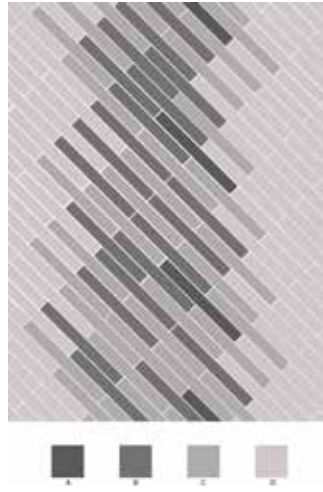
ELECTRIC BLUE | AC : CT000084



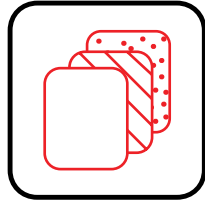


LAYING PATTERNS

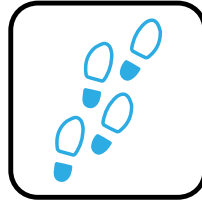




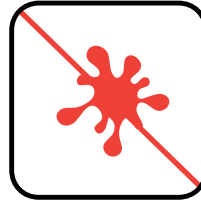
WELSPUN CARPET TILES ADVANTAGES



Multiple Design Possibilities



Ideal For Heavy Foot Traffic



Stain Protect



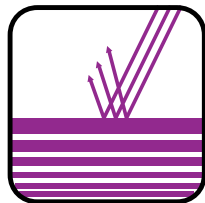
Easy To Maintain



Easy To Install



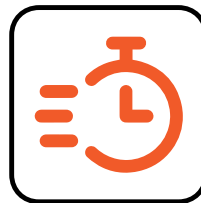
Less Wastage During Installation



Fade Resistant

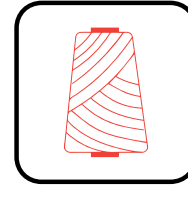


Made in India



Less Lead Time

TRADEMARKS & TECHNOLOGIES



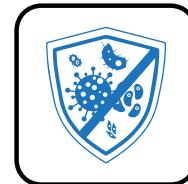
NY6+™

For colors those don't fade out, Welspun Flooring's Ny6+™ is made up of a highly resilient fiber that is known for its superior color retention, strength, stain and fade resistance. With all this, your floor always retains its beauty come what may.



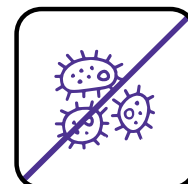
Welspun Ecolite™

Welspun Ecolite™ is a lightweight backing that not only reduces the overall weight significantly, but ensures a 40% less environmental footprint than traditional carpets. Despite that, this backing retains the highest performance standards.



HealthyFloor™ (Optional)

We also have carpet tile options with **antiviral property**. Tested and certified by ResInnova Labs, we are the first company in India to offer antiviral carpet tiles. It eliminates 99.68% of virus thanks to a special coating of silver ion and titanium oxide.



GermiShield™

Health of our loved ones come first. To fight against these invisible forces of nature, these tiles come with innovative **GermiShield™**. This antimicrobial technology, restricts the growth of harmful germs or molds on the floor.



Comfortile™ (Optional)

With Comfortile™ backing, our tiles come with a customized felt-back that not only offers great underfoot comfort, but also sound absorption. Comfortile™ provides extra levels of protection and support for high levels of acoustic and ergonomic support.

PRODUCT SPECIFICATIONS

Yarn	NY6+™
Machine / Gauge	1/12 Loop Infinity
Tufted Weight(Oz)	18
Density	Min. 5,800
Total Thickness(mm)	4 to 5
Pile Thickness(mm)	Upto 3
Backing Type	Welspun Ecolite™
SPI	11
Size(cm)	Plank (25X100)

TEST REPORT SUMMARY

Test Name	Method	Test Name	Method
Anti Microbial Treatment	AATCC 174 (Part II & III)	Colour fastness to bleach	AATCC 6
Delamination	ASTM D 3936	Static Electricity	AATCC 134-1996
Tuft Bind	ASTM 1335-67	Anti Static	ANSI/ESD S 7.1
Dimensional stability	ASTM D 7570	Castor Chair	DIN 54324
Pile weight	ASTM D 5848-07	Hexapod	ASTM D 5252-15
Pile density	ASTM D 5848-07	Static Coefficient	ASTM C 1028
Total thickness	ASTM D 6988-08	Dimensional stability (Aachen test)	DIN-STD-54318/ITTS-004
Pile height	ASTM D 5823-05a	Anti Soil	ASTM D 6540-05
Gauge	ASTM D 5793 - 13	Shampoo Fastness	AATCC 138
Tuft density	ASTM D 5848	Water Fastness	AATCC 107
Flammability (Pill Test)	ASTM D 2859	Velcro-Loops	ITTS 112
Flammability (Radiant Panel)	ASTM E 648-06	Heavy Traffic test (Walk test)	ASTM 6119-03
NBS Smoke Density (Flaming)	ASTM E 662-06	Sound transmission	ASTM C 423-17
Lightfastness	AATCC 16 E	Sound Absorption	ASTM C 423-17
Colour fastness to Ozone	AATCC 129	Static Loading	ISO 015/3415
Colour fastness to NO ₂	AATCC 164-2008	Green Carpet (VOC)	ASTM D 5116
Crocking Dry and Wet	AATCC 165-2008	Acoustic- Nylon	BS EN ISO 354
Stain fastness	AATCC 175-2008/ITTS 002	Thermal Resistance	ASTM C 518

CERTIFICATIONS



Thank You



To transform your flooring, just get in touch with us:

Contact us:

☎ 1800 120 1161

✉ contact_flooring@welspun.com

Address:

Welspun Global Brands Ltd,
Survey No 190, Chandanvelly, Near Hythabad, Shabad Mandal,
Ranga Reddy District, Telangana 501503, India

www.welspunflooring.com

*Colors are indicative. Please refer actual product for exact color