



# FACADE

URBANE 2.0



**WELSPUN**  
FLOORING



## URBANE 2.0

Some artful masterpieces leave an indelible mark on the world and inspire minds for centuries.

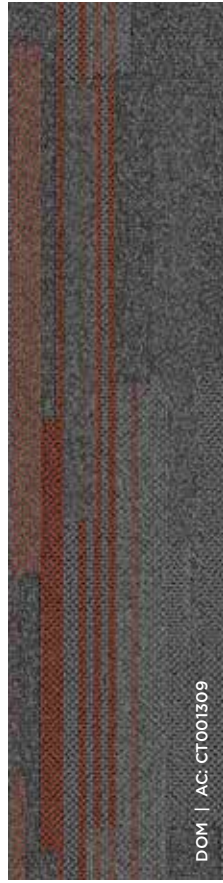
The Welspun Flooring range of Urbane Carpet Tiles is designed keeping their timeless craft as the core element. Create a work environment where genius meets art and reflects your style with Urbane Carpet Tiles.



## FACADE

The most beautiful and elegant architectural structures successfully create an awestruck impression owing to how they look. Modern architecture has evolved leaps and bounds to merit themselves as a piece of art on its own.

An ode to the wonders of modern architecture, the Facade Collection draws inspiration from these structures and complex geometric forms to create designs that are versatile and trans-seasonal.



DOM | AC: CT001309



AROPOLIS | AC: CT001301



CARAVELA | AC: CT001310



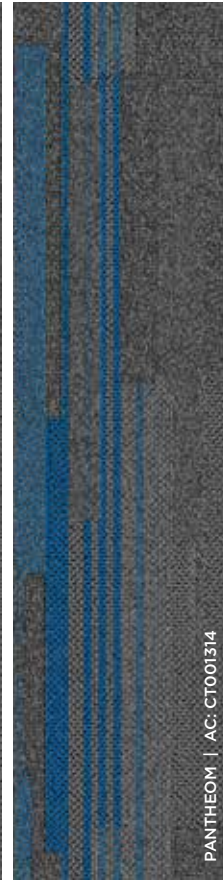
POMPIDOU | AC: CT001302



COLOSSUM | AC: CT001308



PYRAMIDE | AC: CT001300



PANTHEOM | AC: CT001314



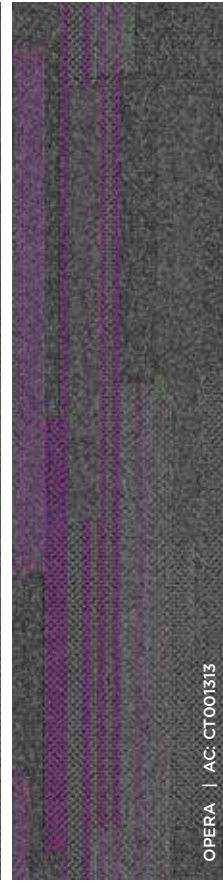
CERDOBA | AC: CT001306



SHARD | AC: CT001312



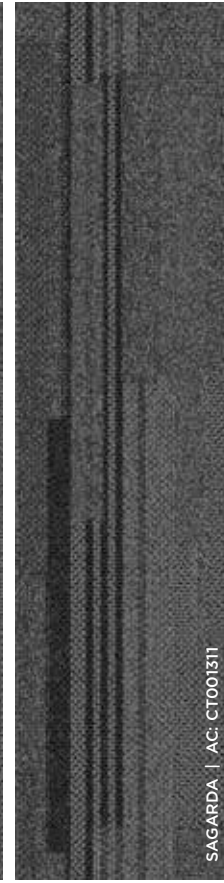
CATHEDRAL | AC: CT001305



OPERA | AC: CT001313



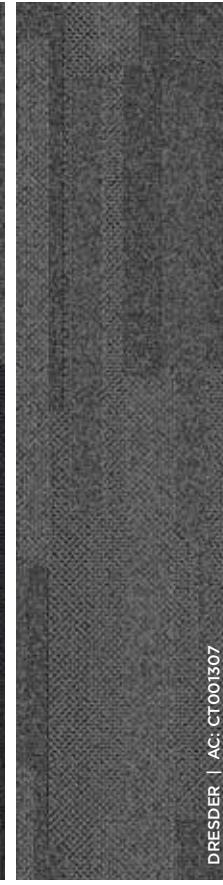
GHERKIN | AC: CT001304



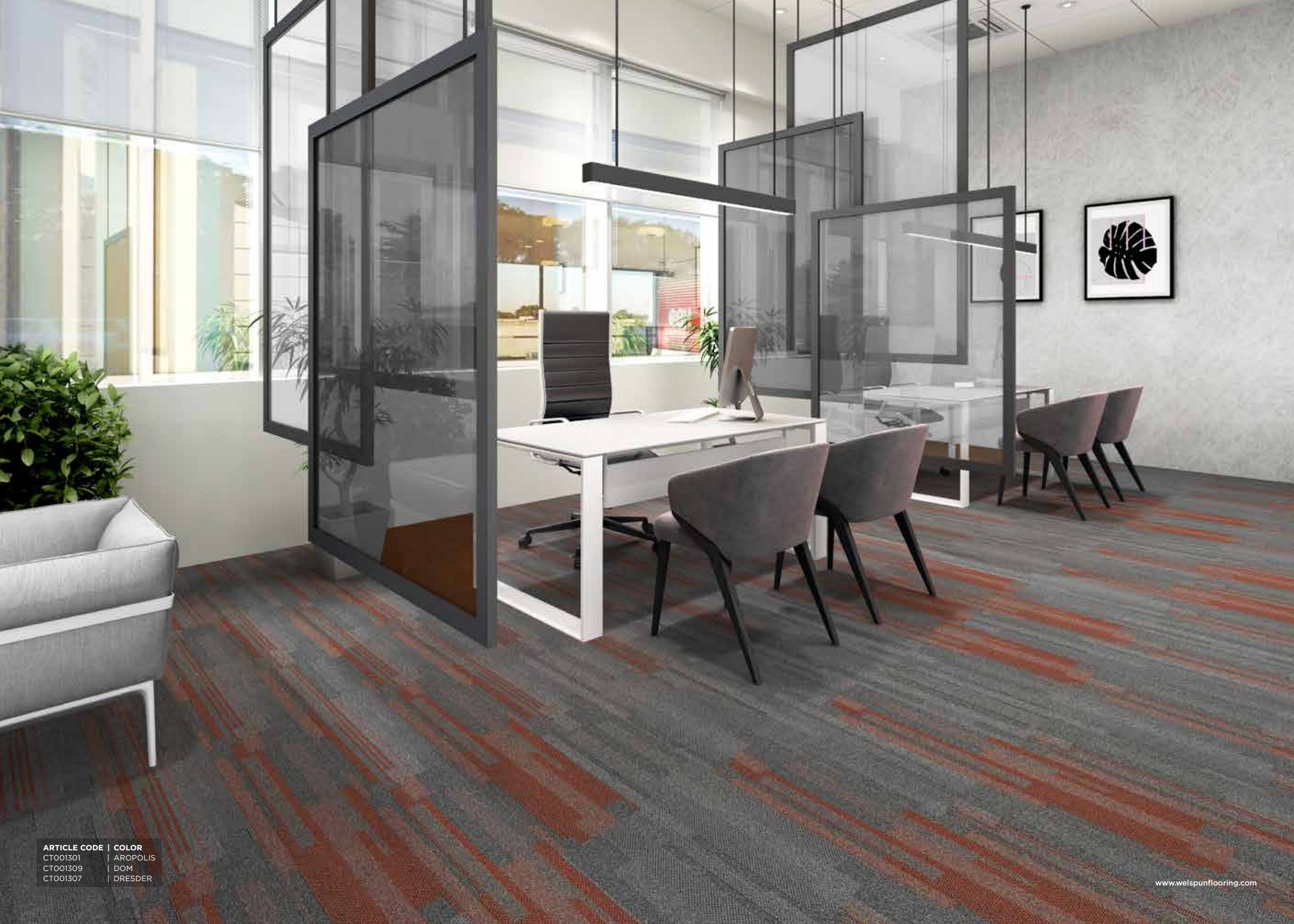
SAGARDA | AC: CT001311



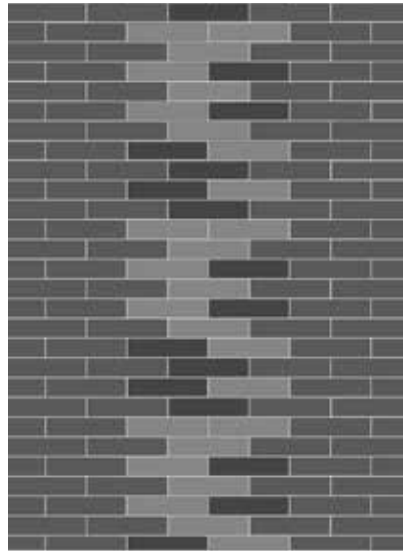
ARCH | AC: CT001303



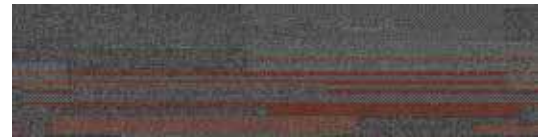
DRESSER | AC: CT001307



ARTICLE CODE | COLOR  
CT001301 | AROPOLIS  
CT001309 | DOM  
CT001307 | DRESDER



AROPOLIS | AC: CT001301



DOM | AC: CT001309



DRESDER | AC: CT001307

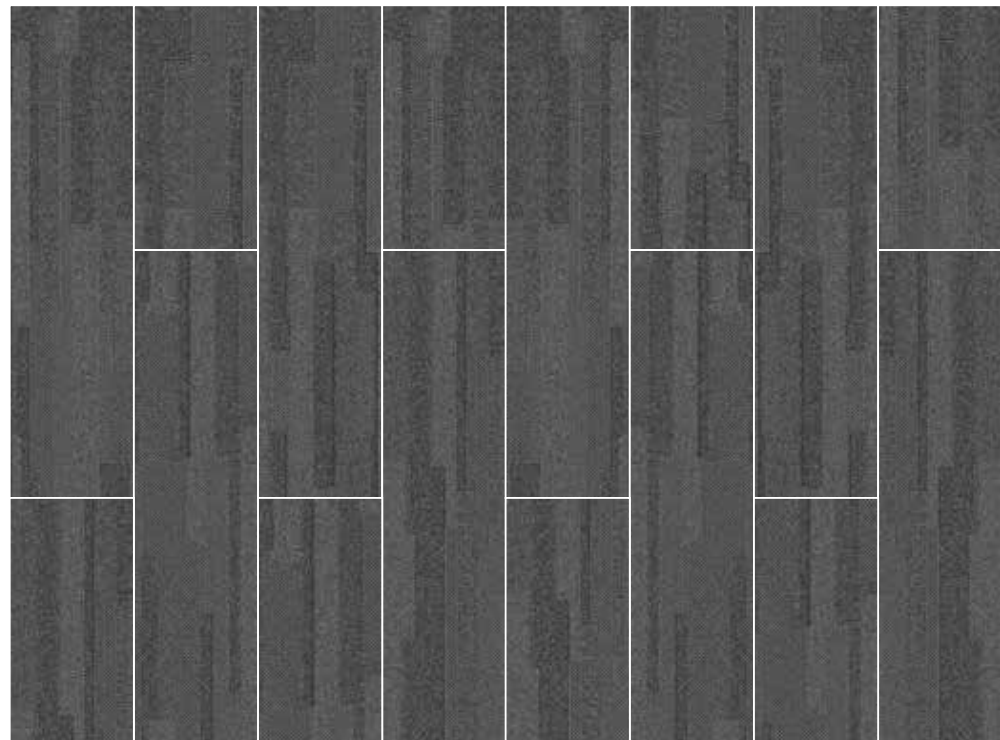
A

B

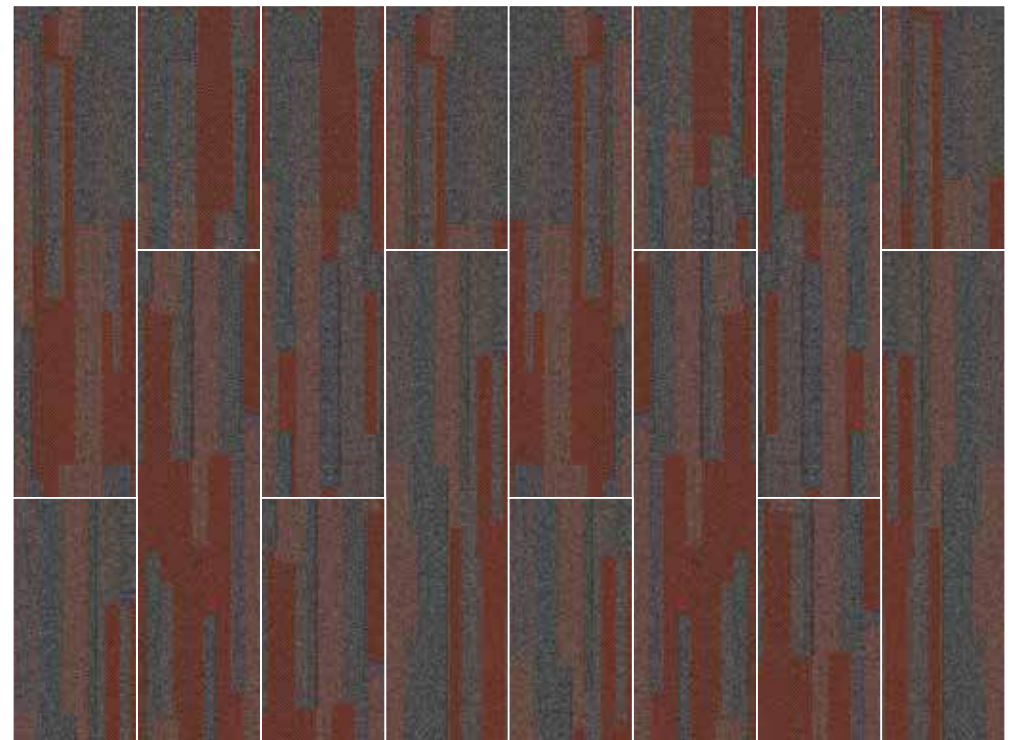
C



DOM | AC: CT001309



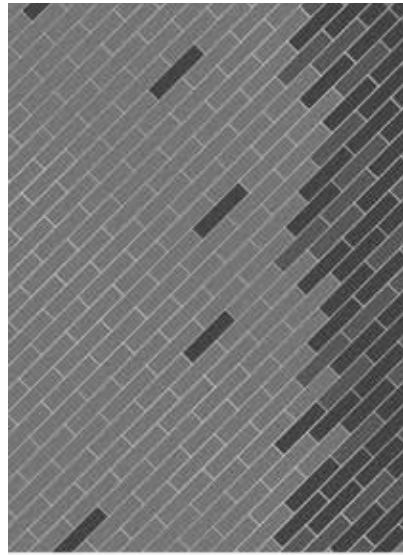
DRESDER | AC: CT001307



AROPOLIS | AC: CT001301

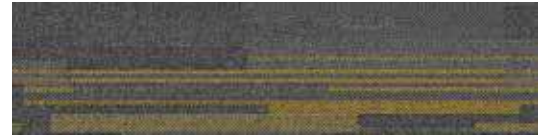


ARTICLE CODE | COLOR  
CT001302 | POMPIDOU  
CT001310 | CARAVELA  
CT001307 | DRESDER



A

POMPIDOU | AC: CT001302



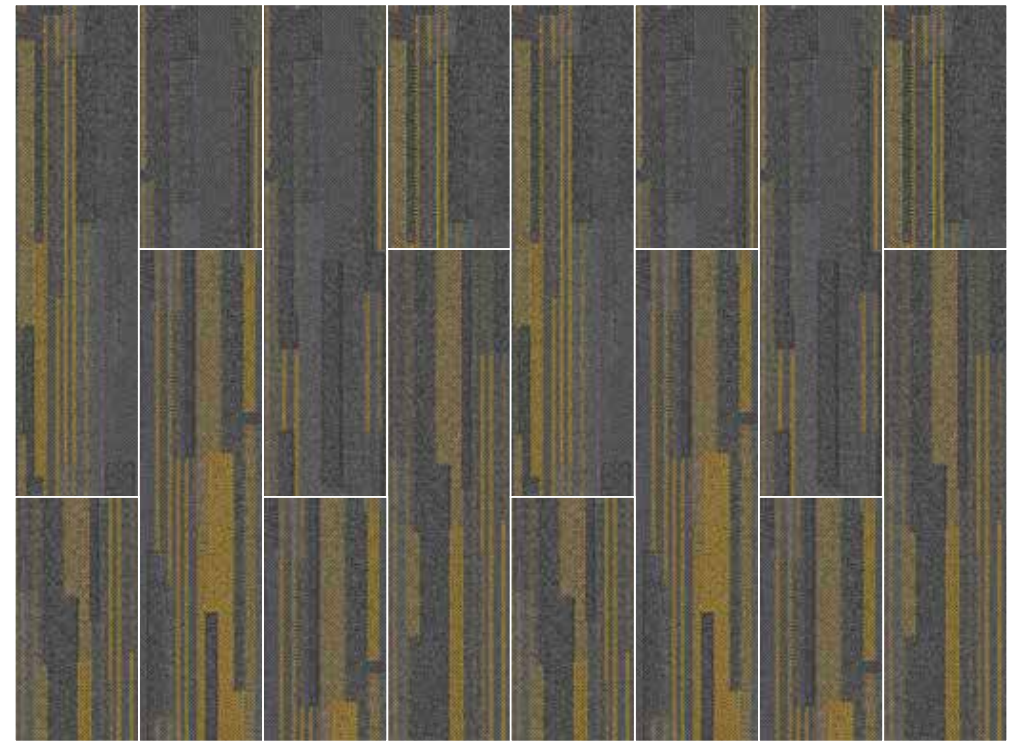
B

CARAVELA | AC: CT001310

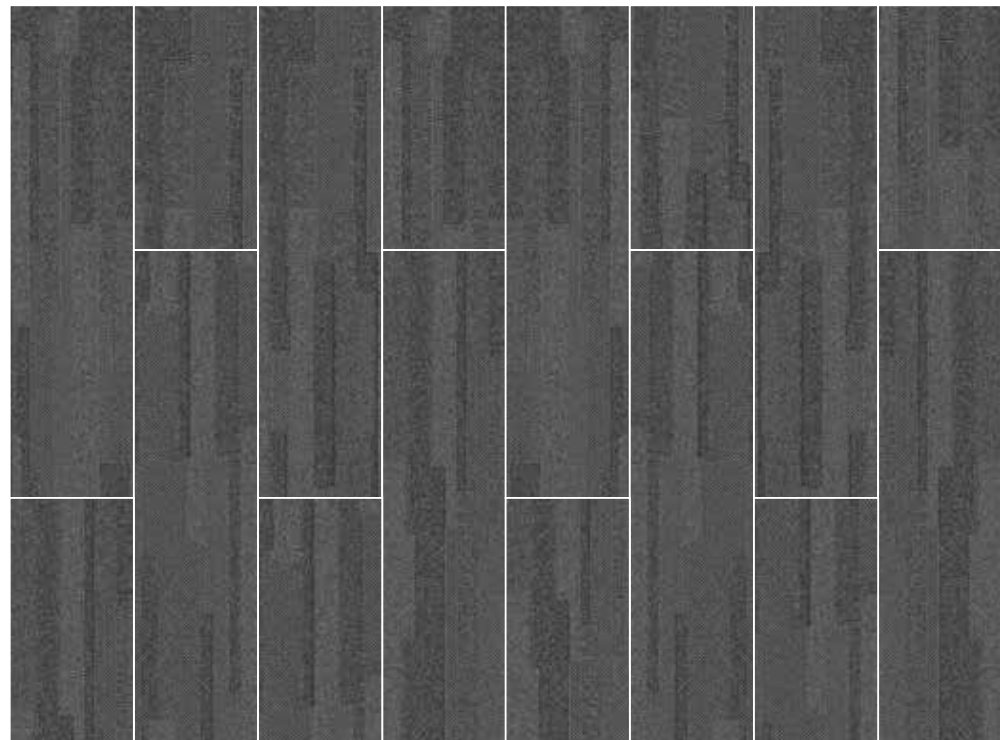


C

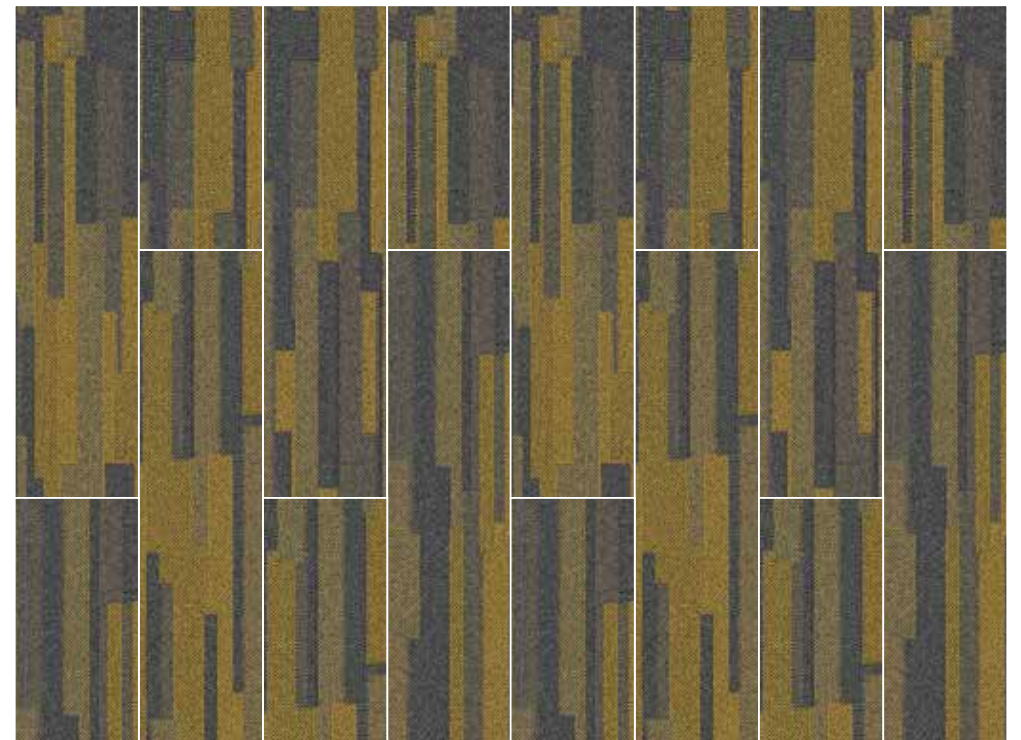
DRESDER | AC: CT001307



CARAVELA | AC: CT001310



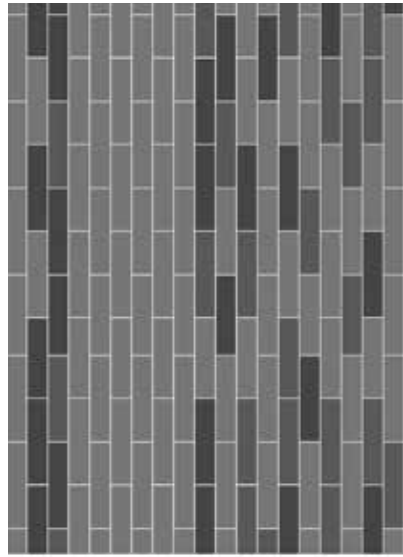
DRESDER | AC: CT001307



POMPIDOU | AC: CT001302



ARTICLE CODE | COLOR  
CT001300 | PYRAMIDE  
CT001308 | COLOSSCUM  
CT001307 | DRESDER



PYRAMIDE | AC: CT001300

A



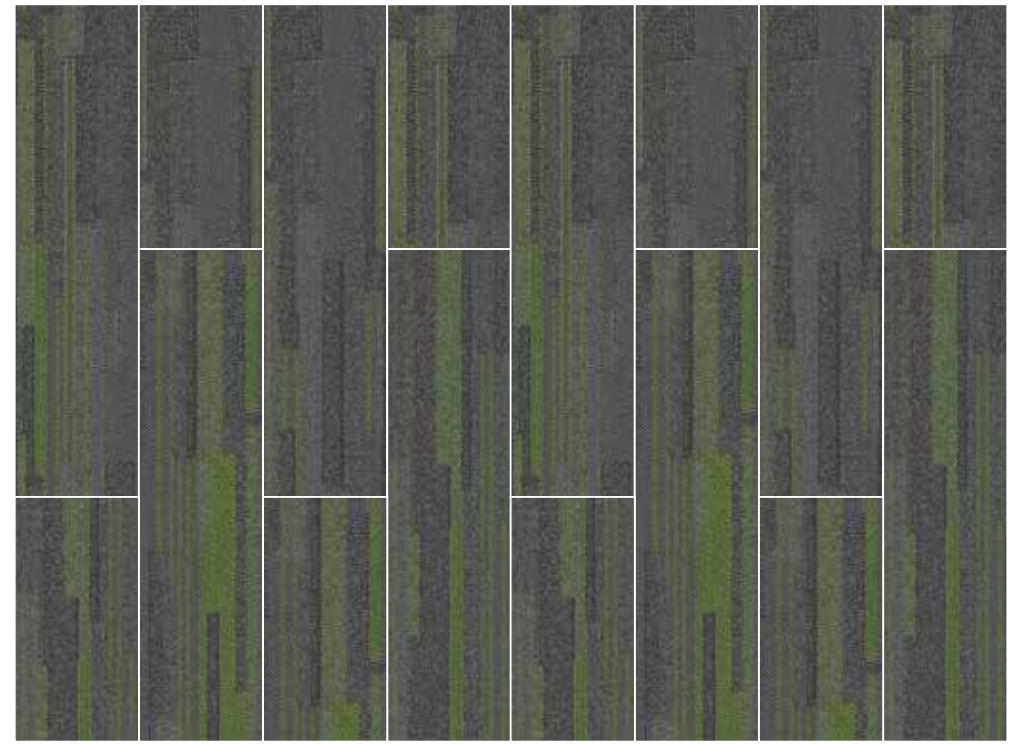
COLOSSCUM | AC: CT001308

B

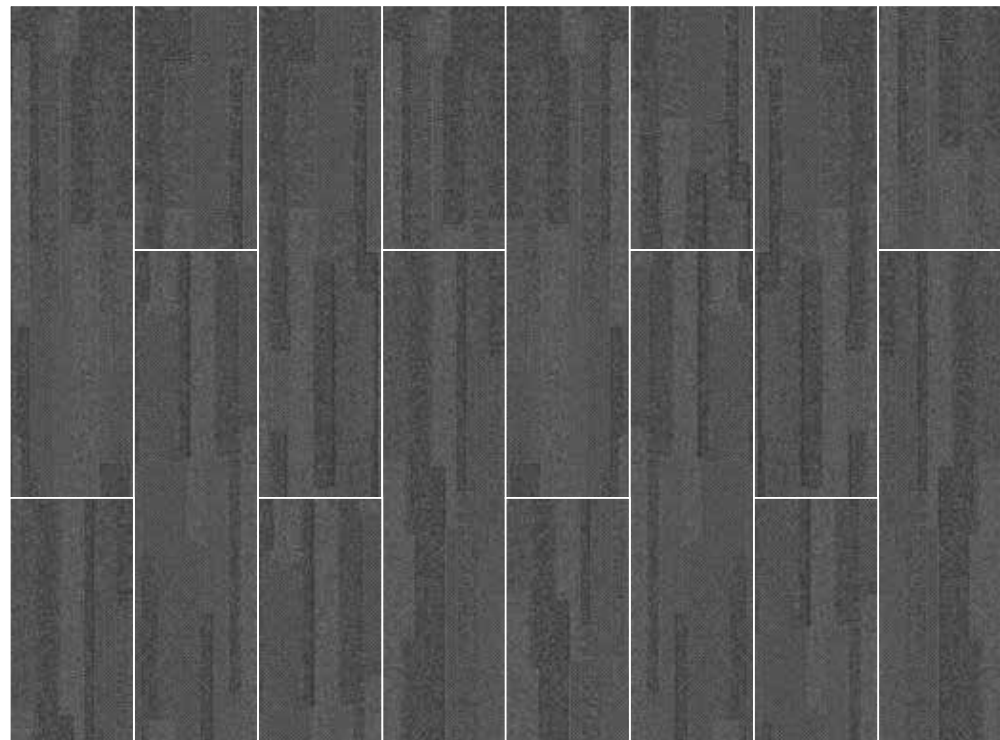


DRESDER | AC: CT001307

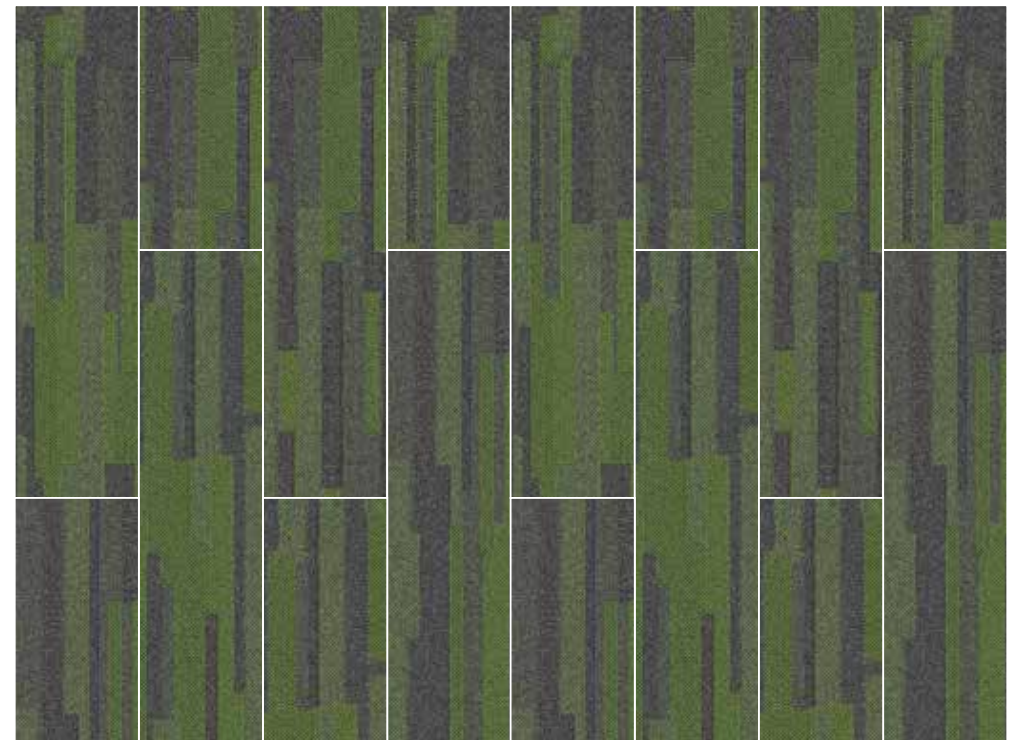
C



COLOSSCUM | AC: CT001308



DRESDER | AC: CT001307



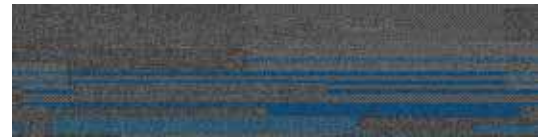
PYRAMIDE | AC: CT001300



ARTICLE CODE | COLOR  
CT001306 | CERDOBA  
CT001314 | PANTHEOM  
CT001307 | DRESDER



CERDOBA | AC: CT001306



PANTHEOM | AC: CT001314

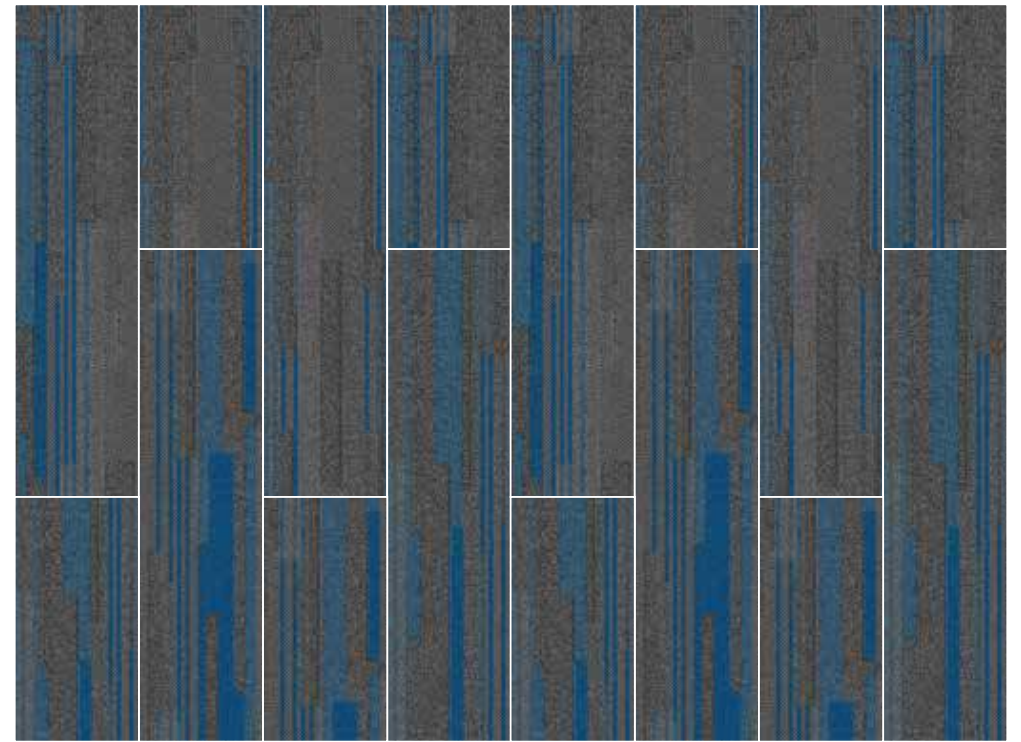


DRESDER | AC: CT001307

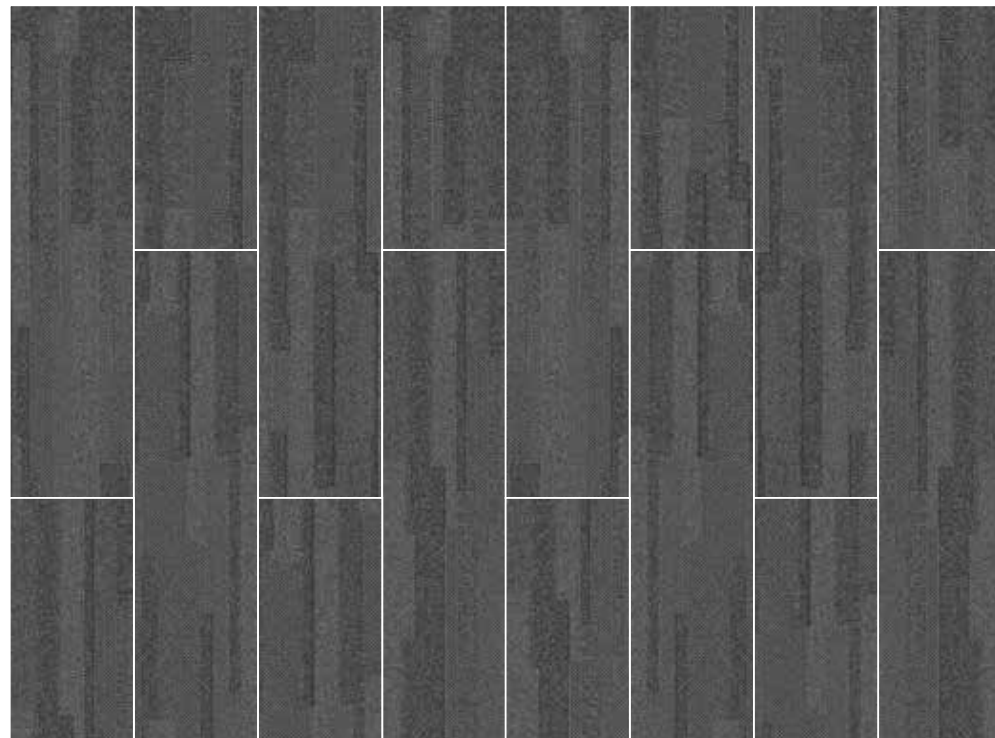
A

B

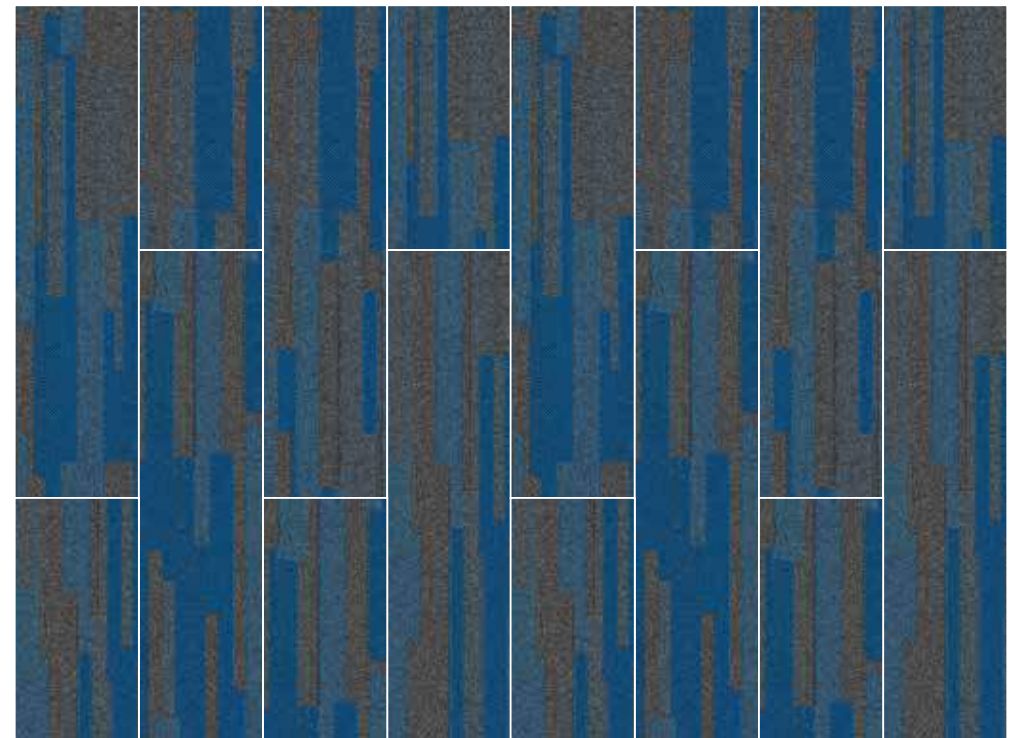
C



PANTHEOM | AC: CT001314



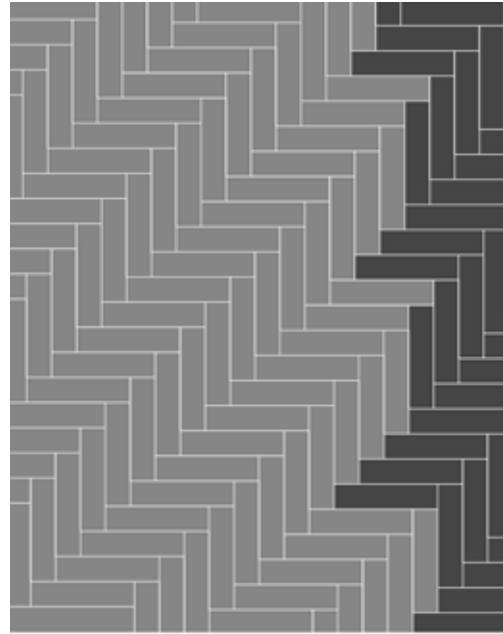
DRESDER | AC: CT001307



CERDOBA | AC: CT001306

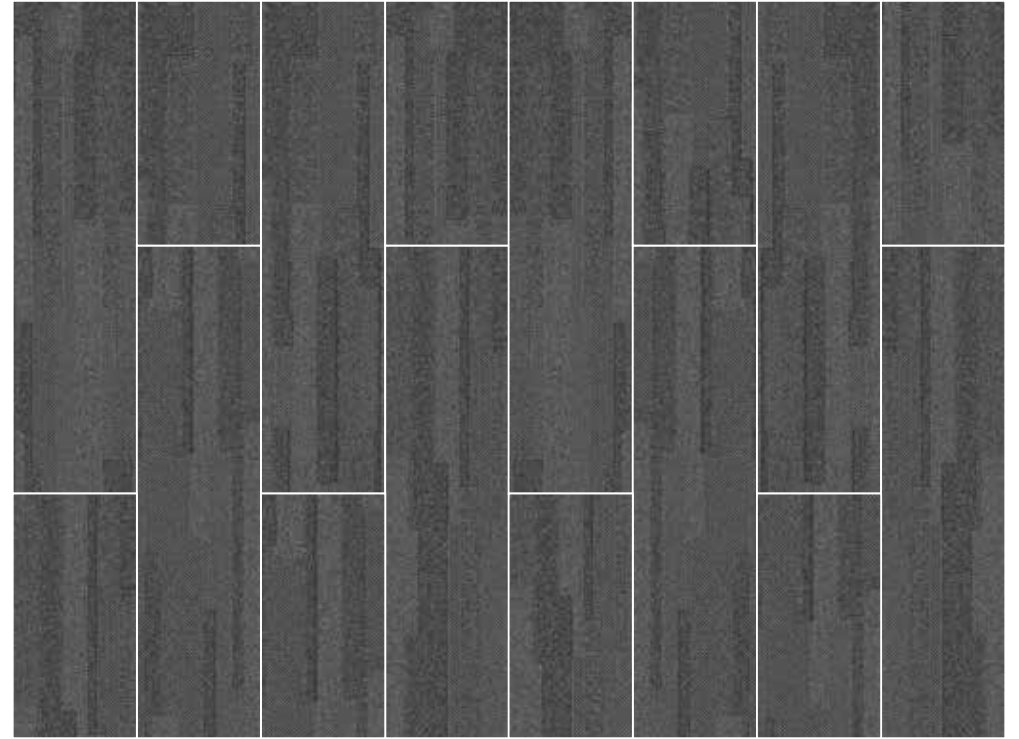


ARTICLE CODE | COLOR  
CT001305 | CATHEDRAL  
CT001307 | DRESDER



A

B



DRESDER | AC: CT001307



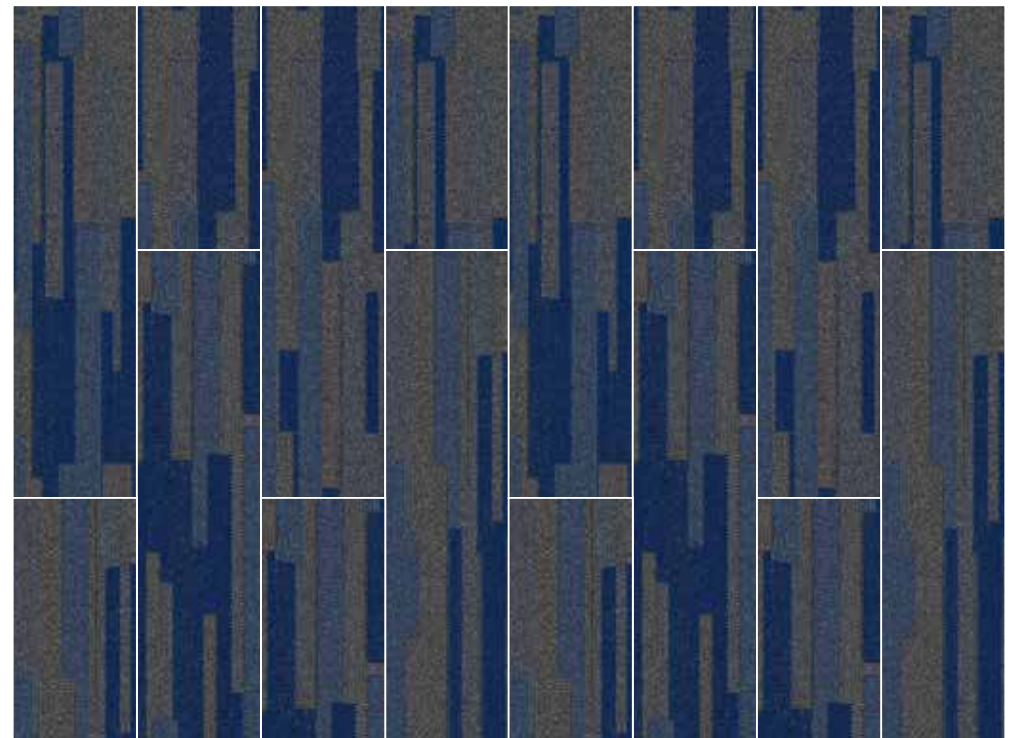
A

CATHEDRAL | AC: CT001305



B

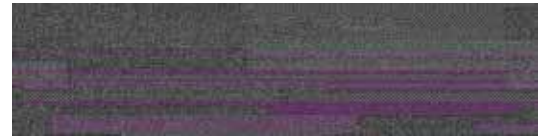
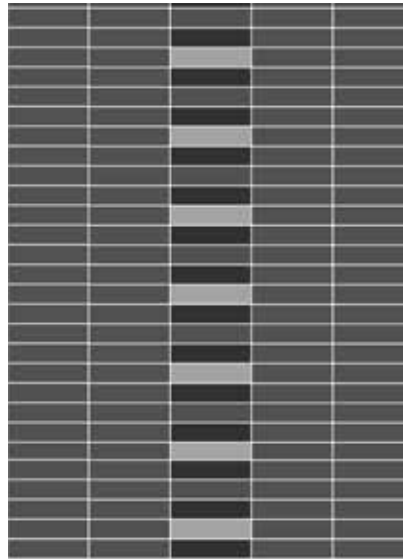
DRESDER | AC: CT001307



CATHEDRAL | AC: CT001305



ARTICLE CODE | COLOR  
CT001304 | GHERKIN  
CT001313 | OPERA  
CT001307 | DRESDER



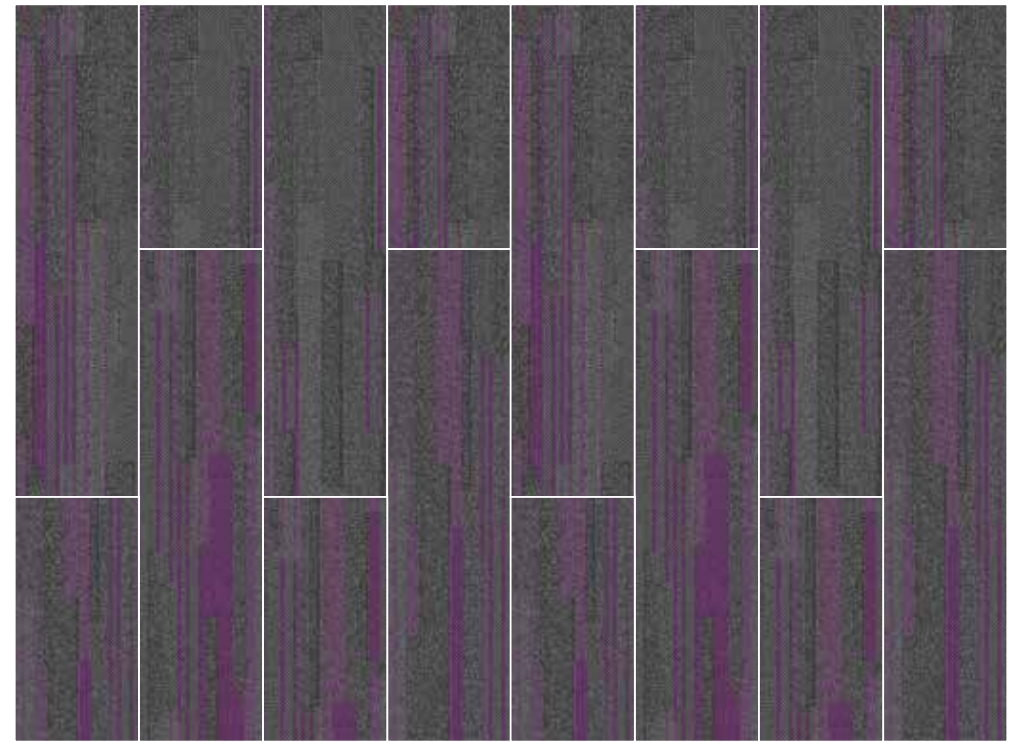
OPERA | AC: CT001313



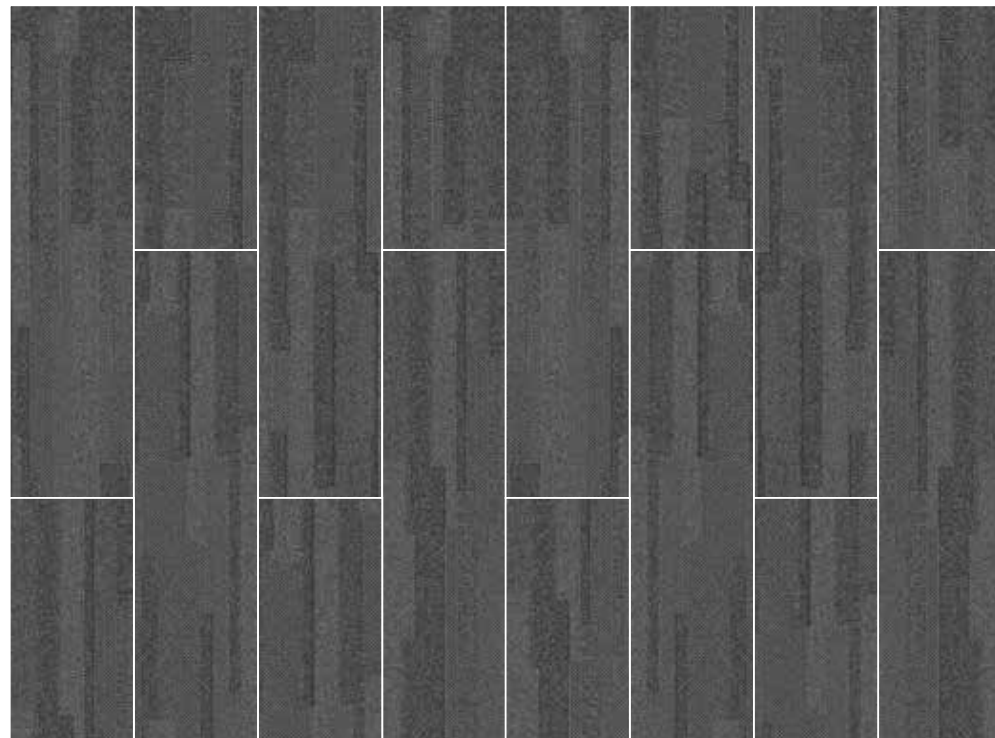
GHERKIN | AC: CT001304



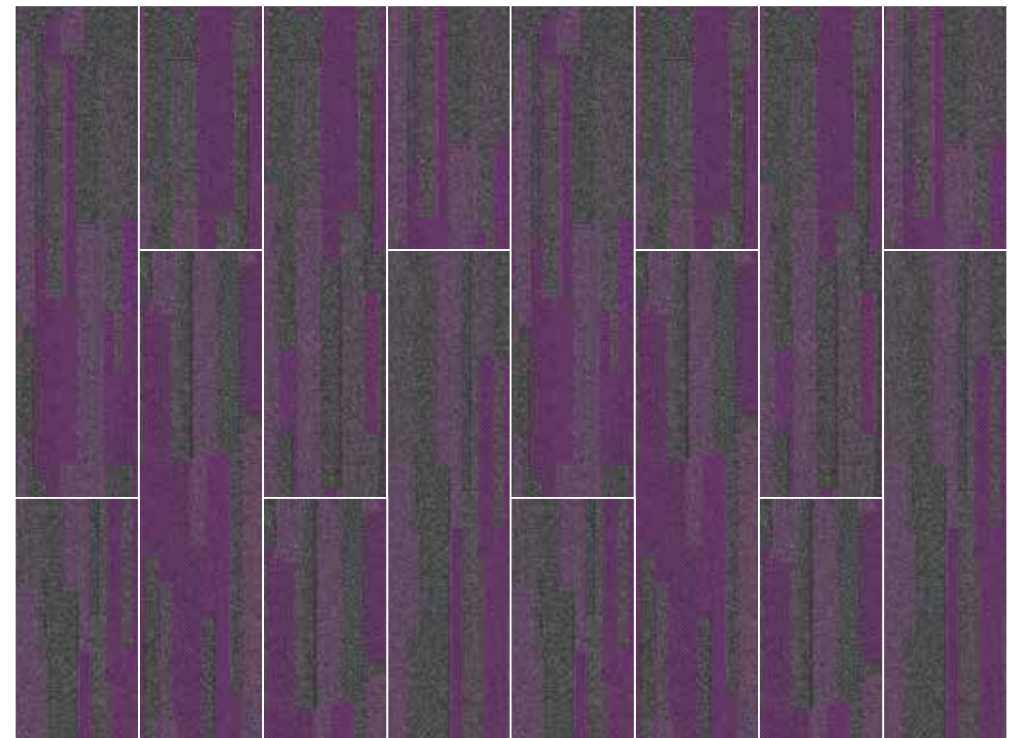
DRESDER | AC: CT001307



OPERA | AC: CT001313



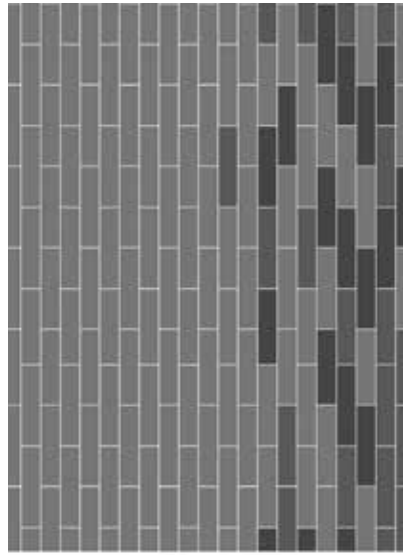
DRESDER | AC: CT001307



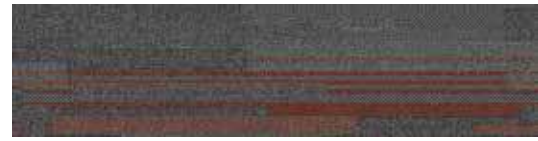
GHERKIN | AC: CT001304



ARTICLE CODE	COLOR
CT001301	AROPOLIS
CT001309	DOM
CT001307	DRESDER



AROPOLIS | AC: CT001301



DOM | AC: CT001309

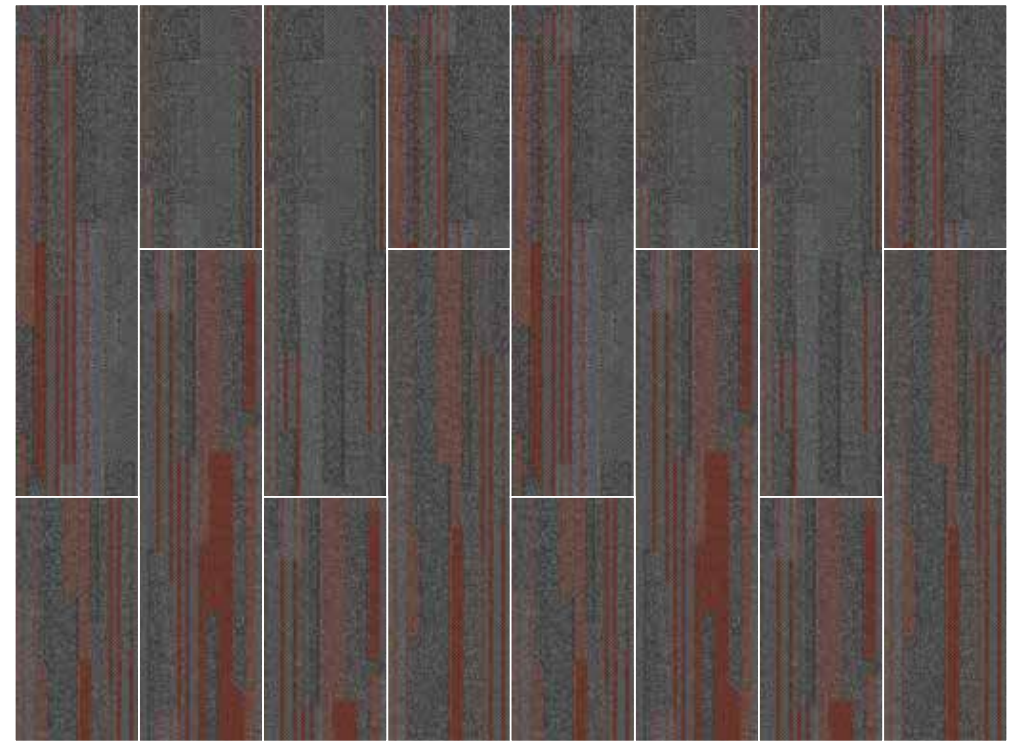


DRESDER | AC: CT001307

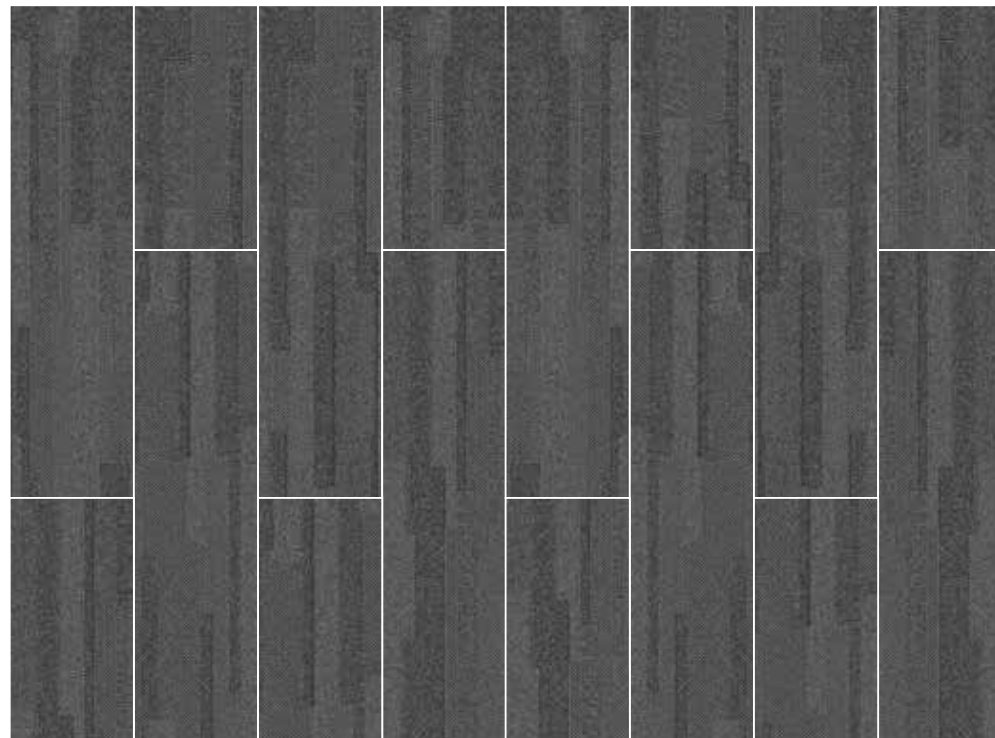
A

B

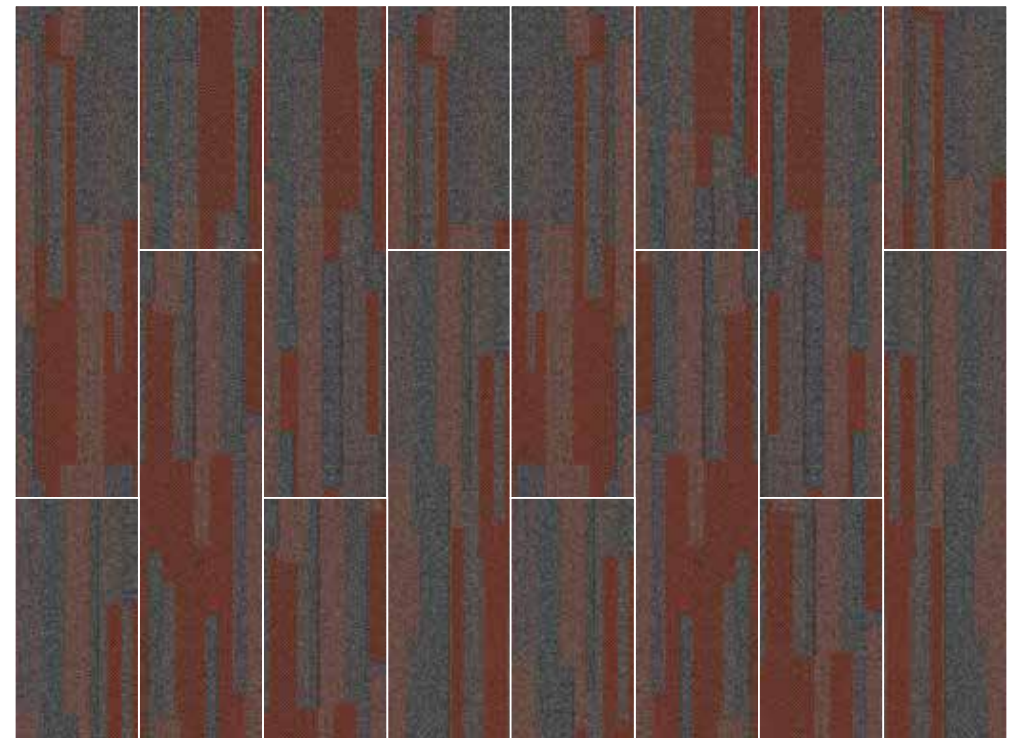
C



DOM | AC: CT001309



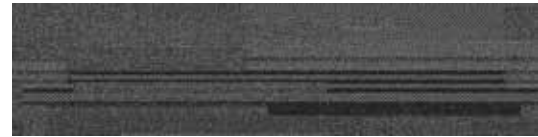
DRESDER | AC: CT001307



AROPOLIS | AC: CT001301



ARTICLE CODE | COLOR  
CT001311 | SAGARDA  
CT001308 | COLOSSCUM  
CT001307 | DRESDER



A

SAGARDA | AC: CT001311



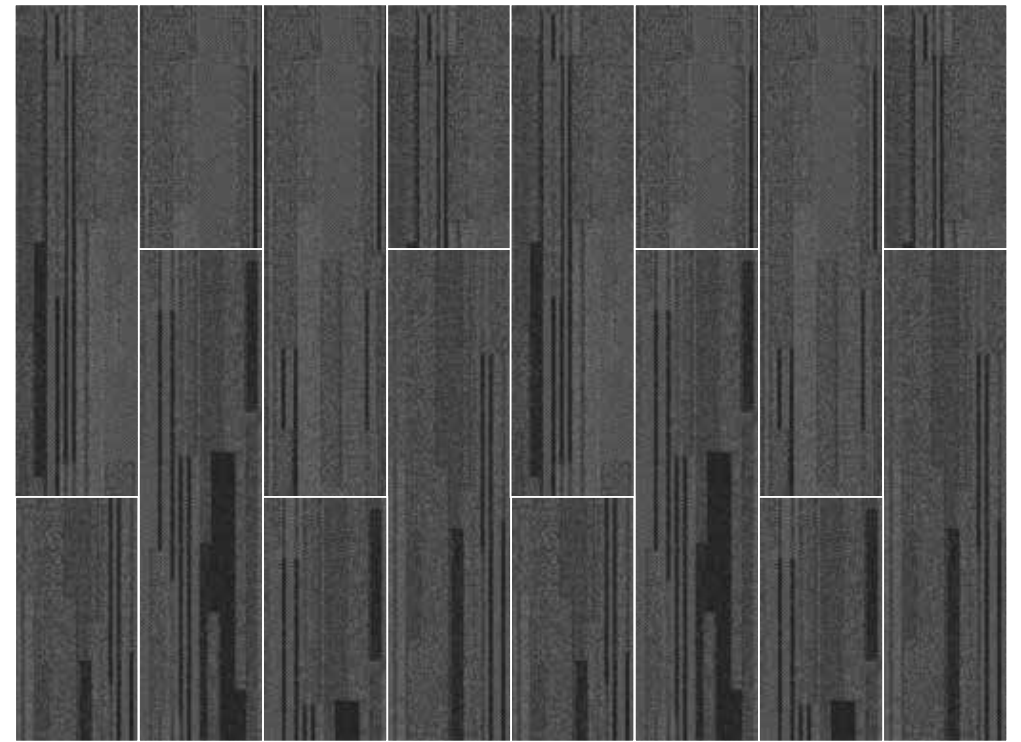
B

COLOSSCUM | AC: CT001308

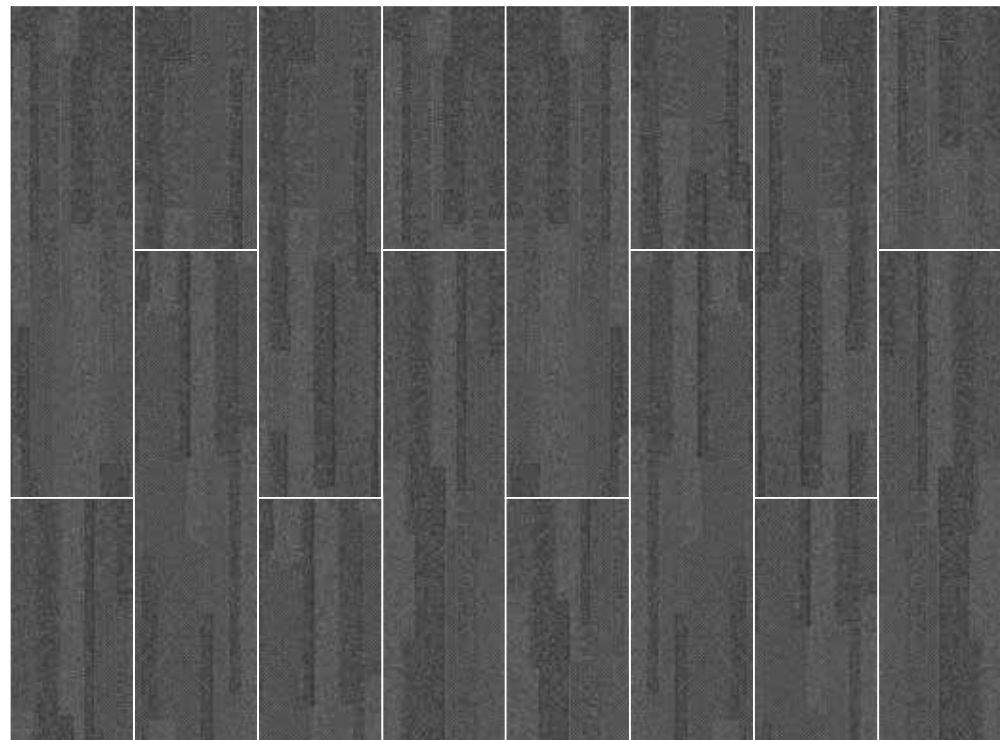


C

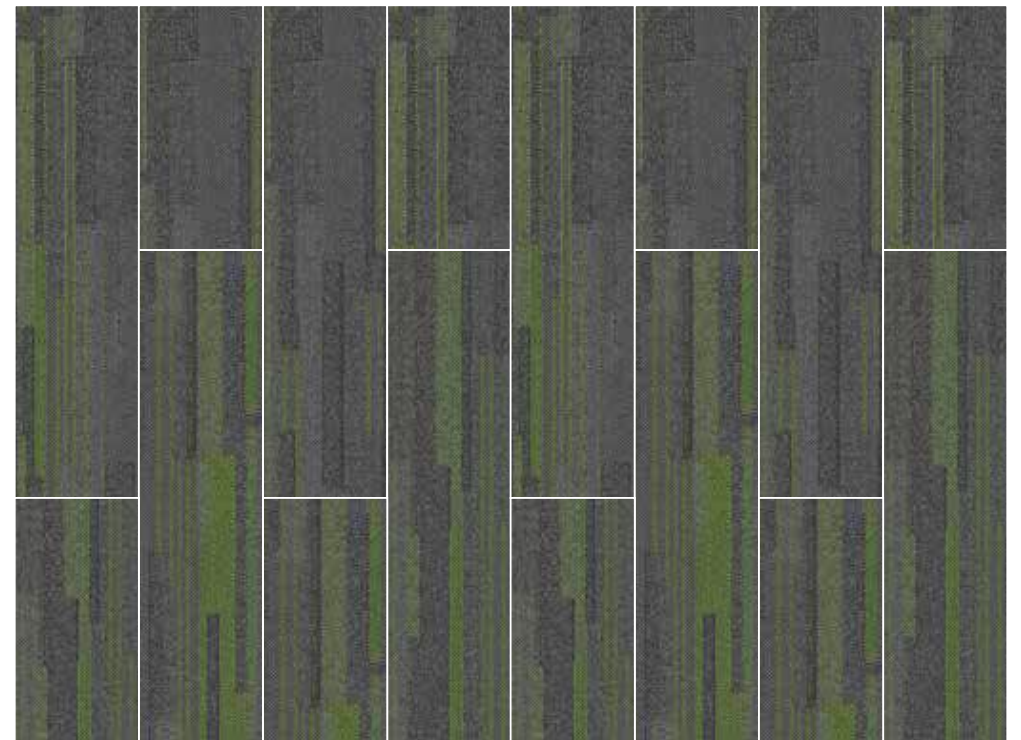
DRESDER | AC: CT001307



SAGARDA | AC: CT001311



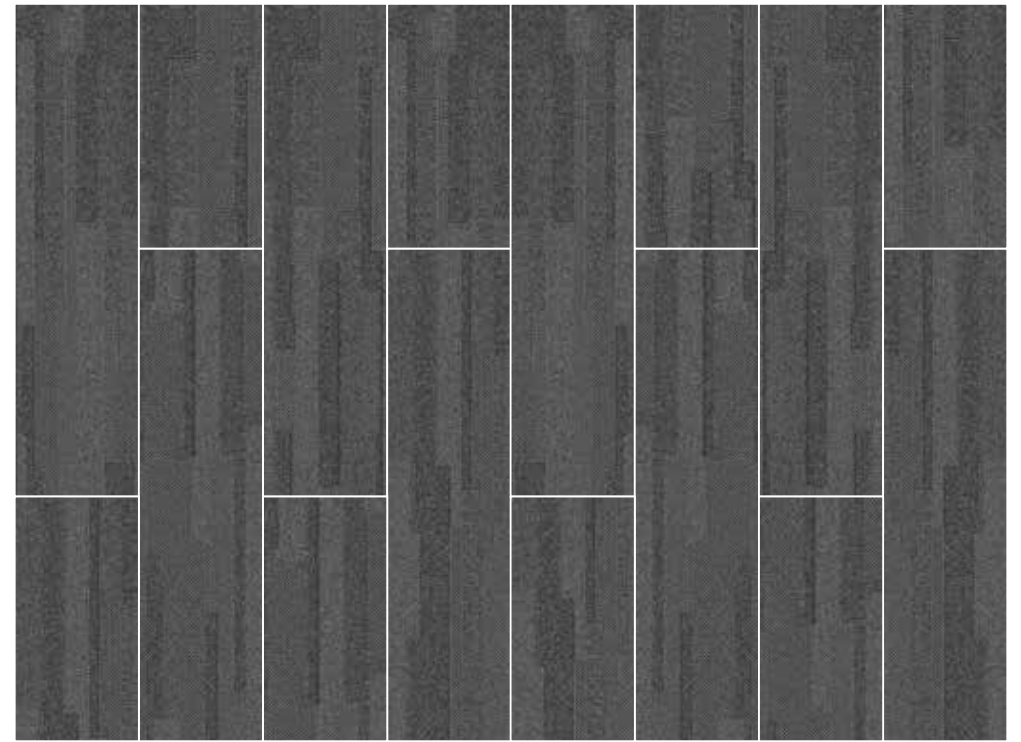
DRESDER | AC: CT001307



COLOSSCUM | AC: CT001308



ARTICLE CODE | COLOR  
CT001313 | OPERA  
CT001307 | DRESDER



DRESDER | AC: CT001307



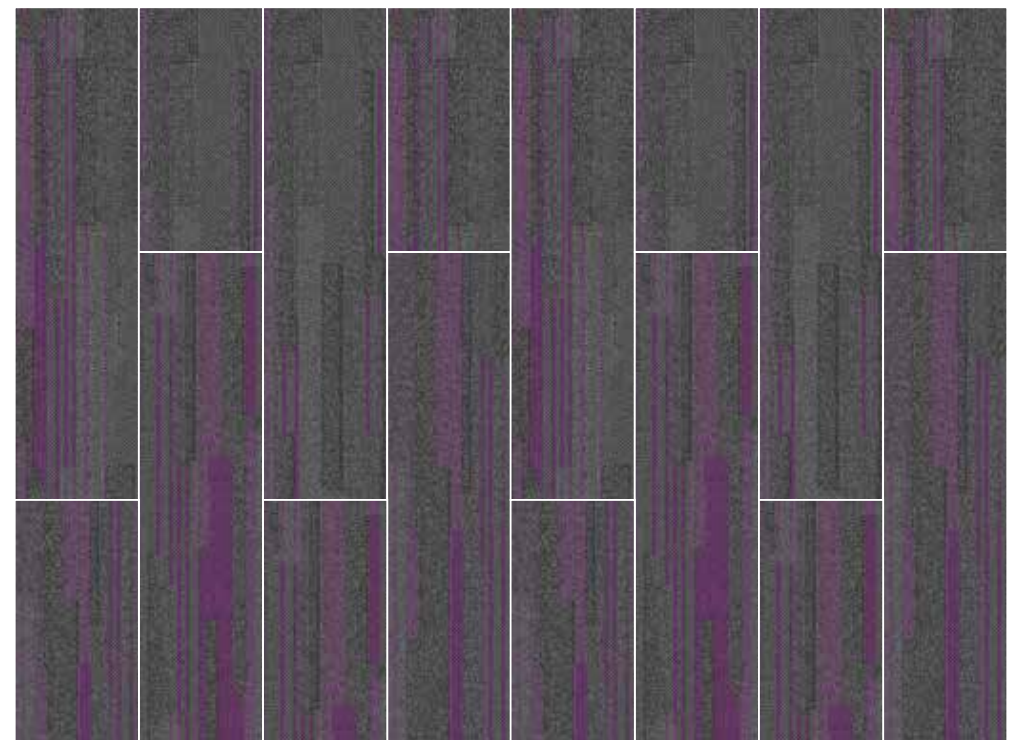
A

OPERA | AC: CT001313



B

DRESDER | AC: CT001307



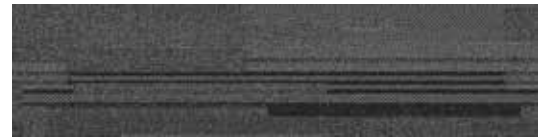
OPERA | AC: CT001313



ARTICLE CODE | COLOR  
CT001311 | SAGARDA  
CT001303 | ARCH  
CT001307 | DRESDER



ARCH | AC: CT001303



SAGARDA | AC: CT001311

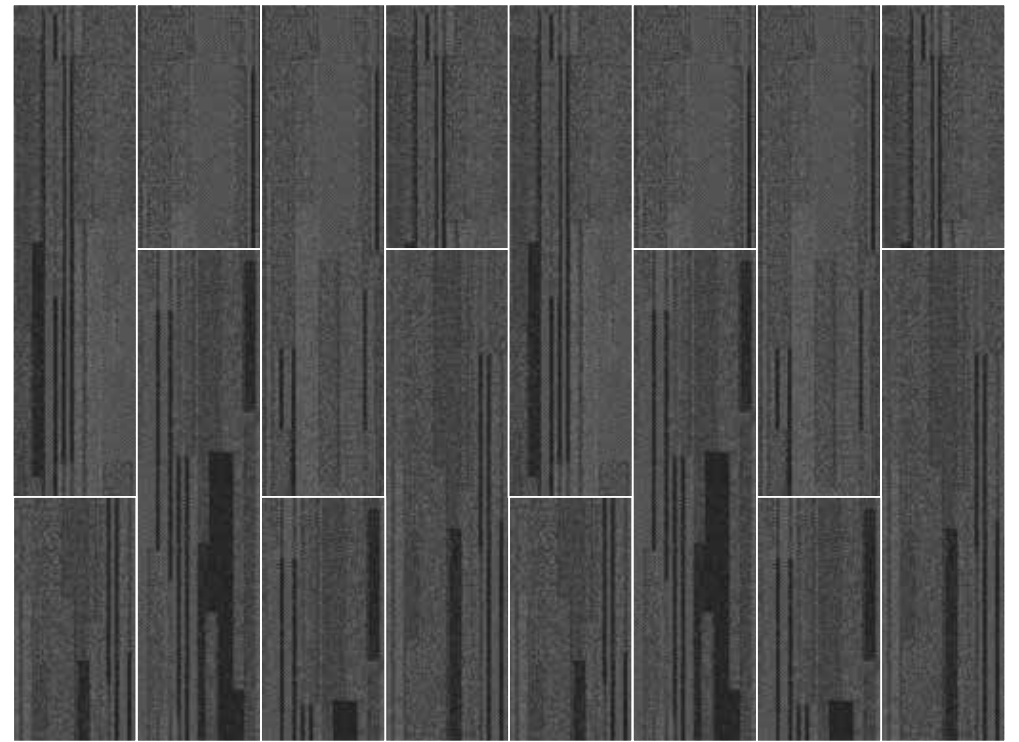


DRESDER | AC: CT001307

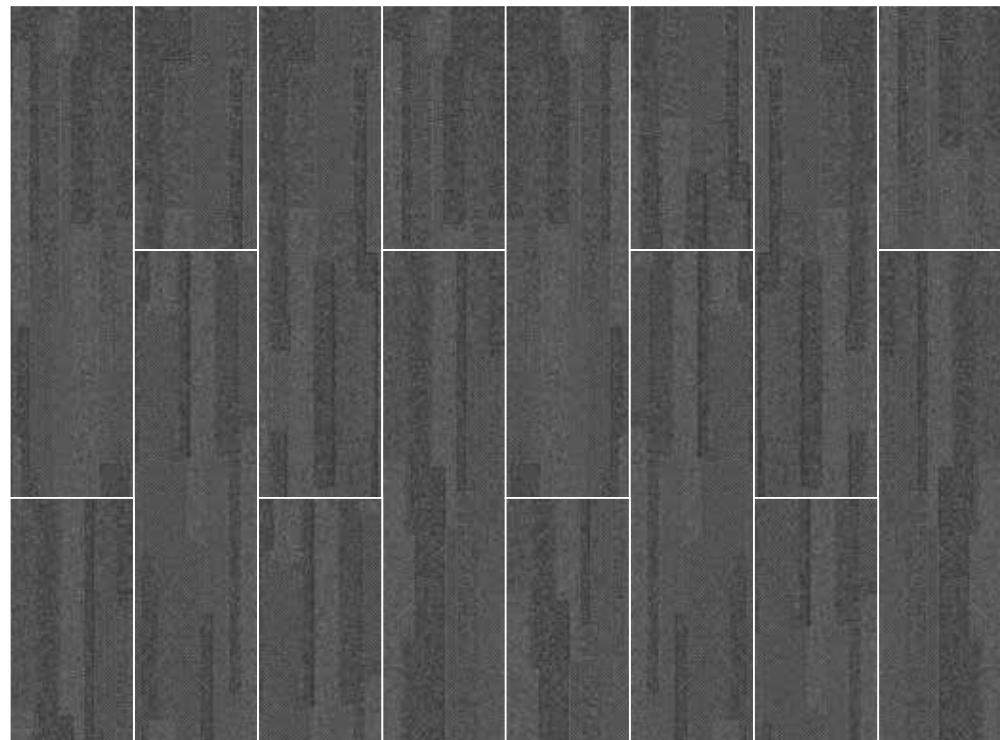
A

B

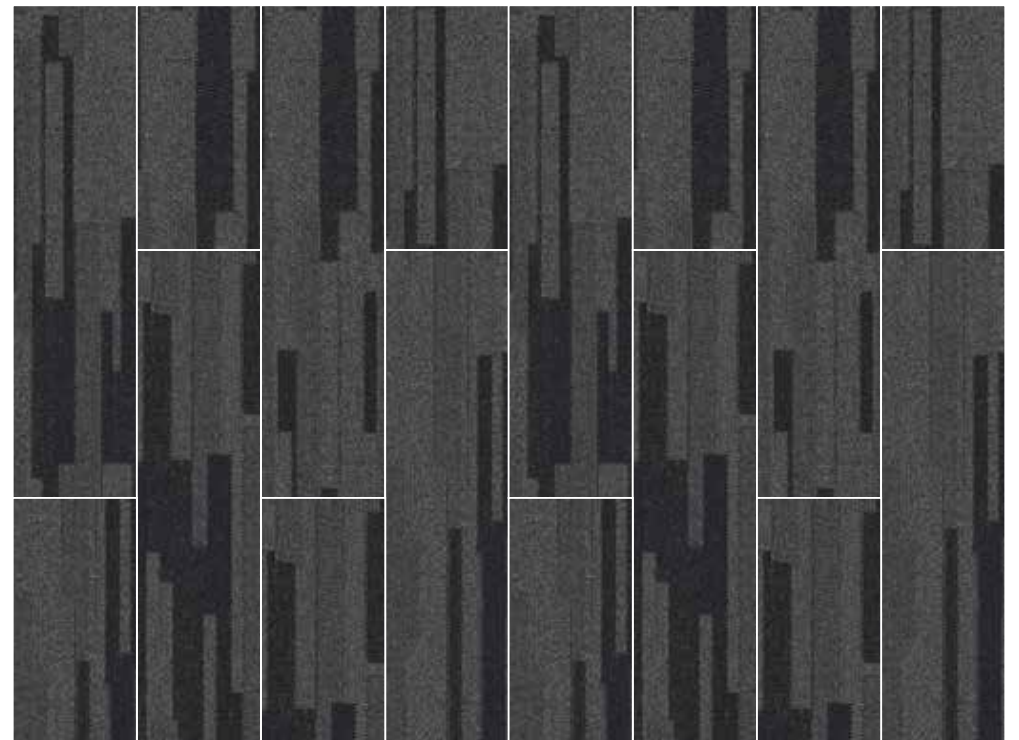
C



SAGARDA | AC: CT001311



DRESDER | AC: CT001307



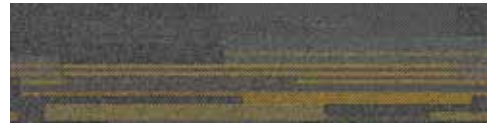
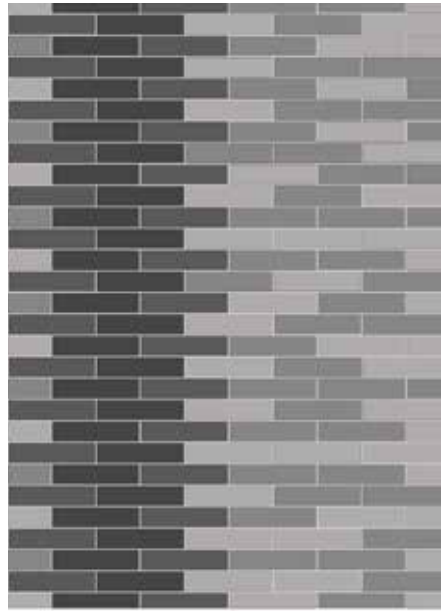
ARCH | AC: CT001303



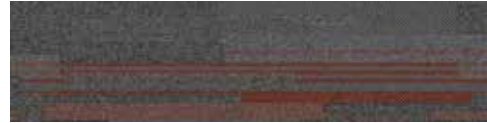
Two  
three  
four  
five  
six  
seven  
eight  
nine  
ten  
eleven  
twelve

1:38  
Friday, August 26  
WELSPUN  
Flooring

ARTICLE CODE | COLOR  
CT001310 | CARAVELA  
CT001309 | DOM  
CT001303 | ARCH  
CT001307 | DRESDER



CARAVELA | AC: CT001310



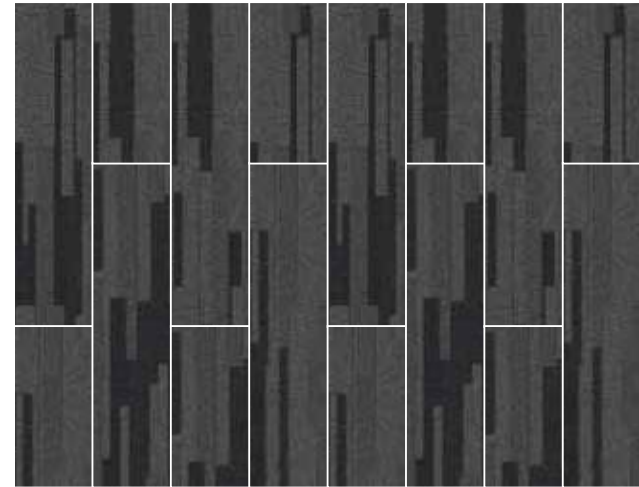
DOM | AC: CT001309



ARCH | AC: CT001303



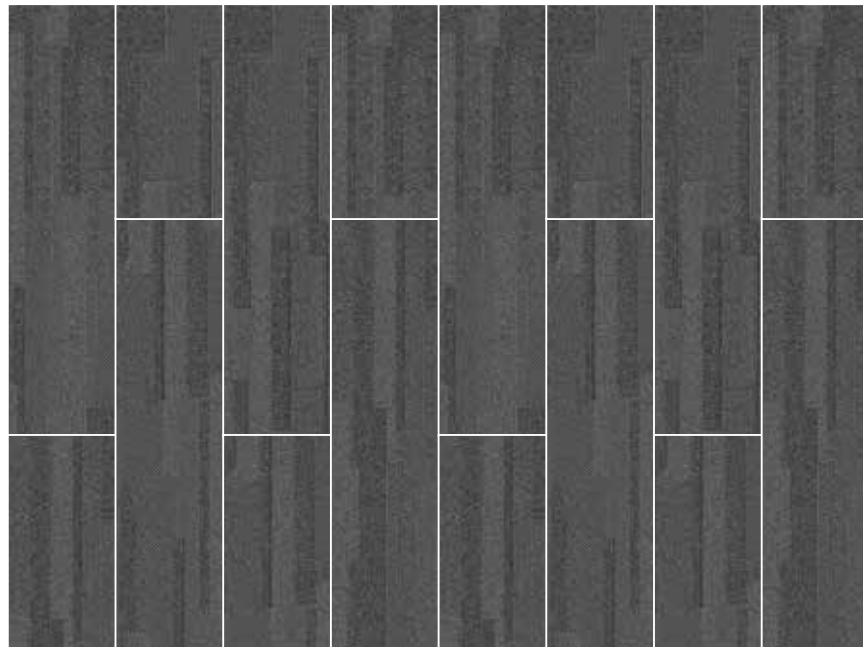
DRESDER | AC: CT001307



ARCH | AC: CT001303



DOM | AC: CT001309



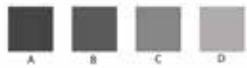
DRESDER | AC: CT001307



CARAVELA | AC: CT001310



ARTICLE CODE | COLOR  
CT001314 | PANTHEOM  
CT001312 | SHARD  
CT001311 | SAGARDA  
CT001307 | DRESDER



SHARD | AC: CT001312



PANTHEOM | AC: CT001314



SAGARDA | AC: CT001311



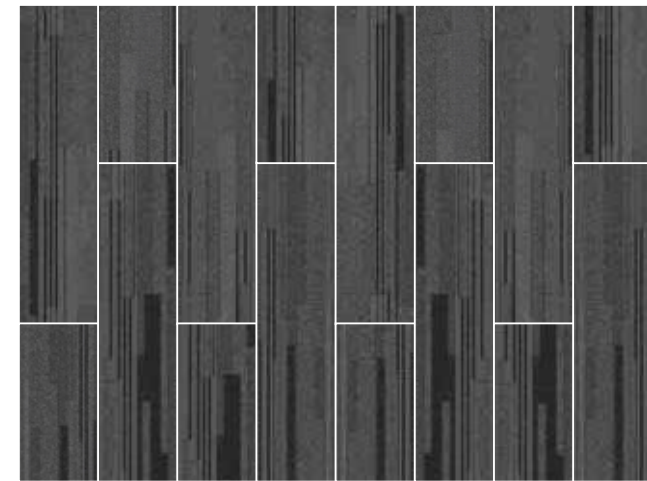
DRESDER | AC: CT001307

A

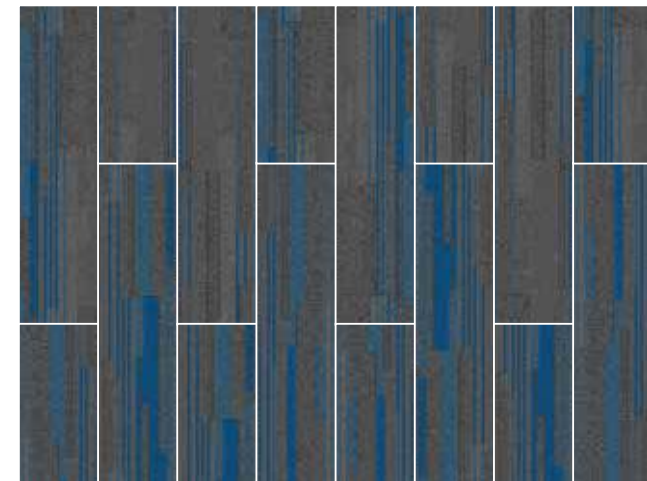
B

C

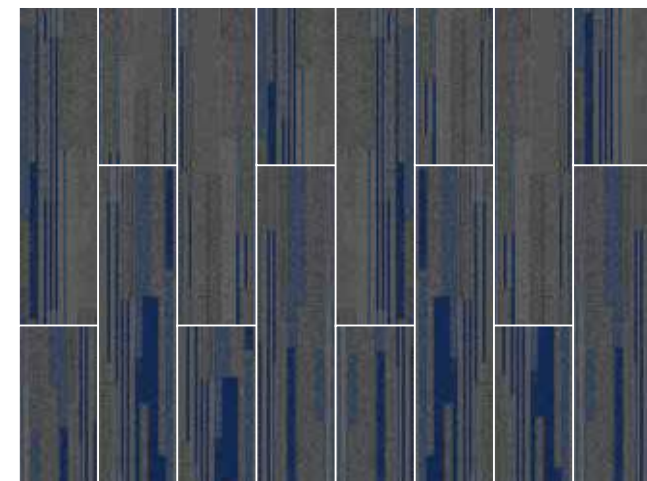
D



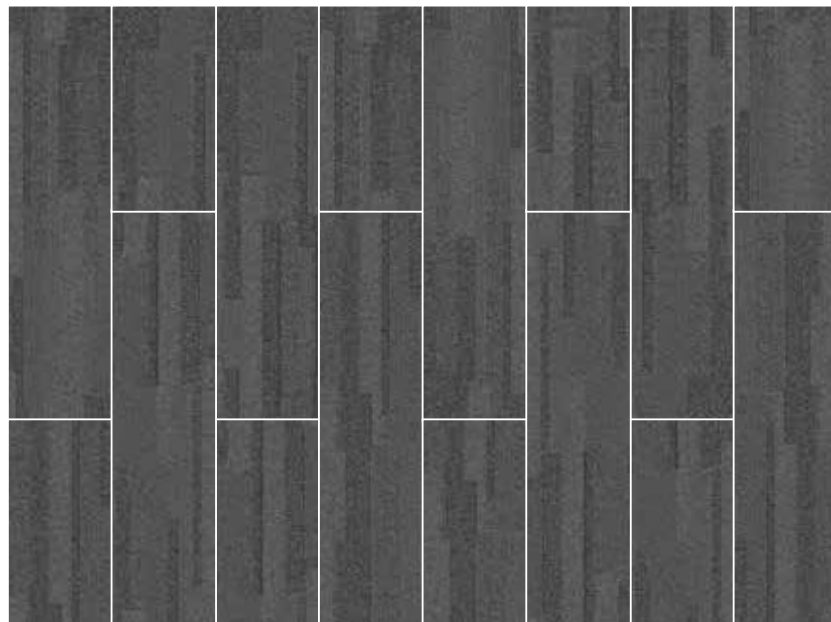
SAGARDA | AC: CT001311



PANTHEOM | AC: CT001314



SHARD | AC: CT001312



DRESDER | AC: CT001307



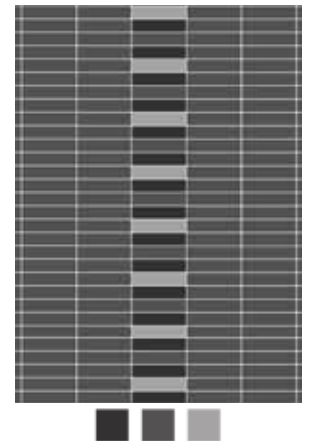
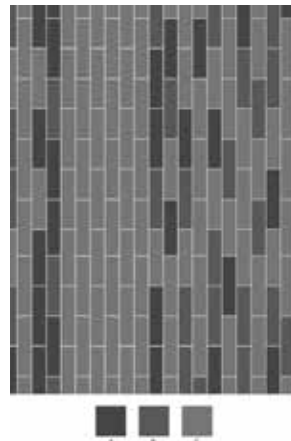
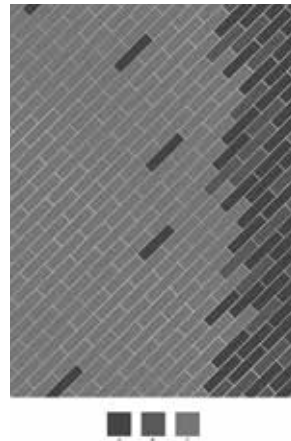
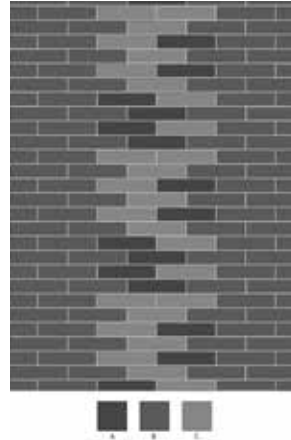


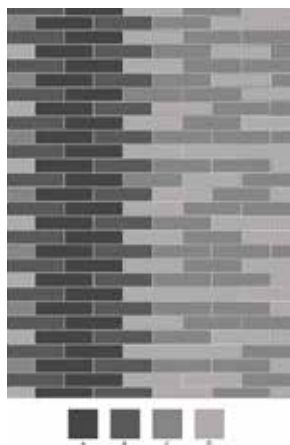
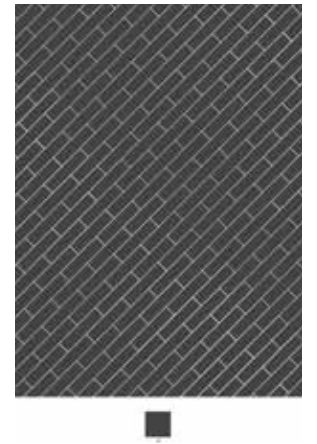
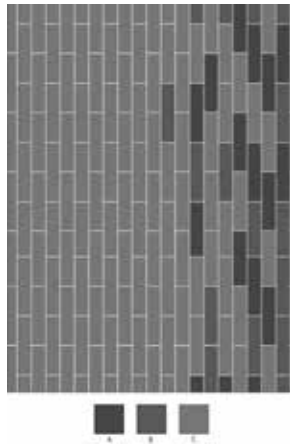


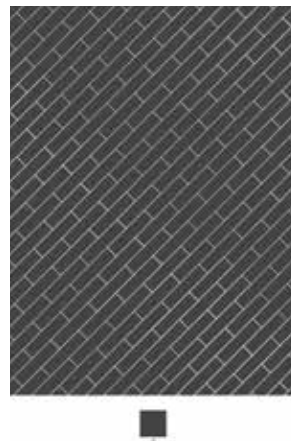
ARTICLE CODE | COLOR  
CT001307 | DRESDER



# LAYING PATTERNS

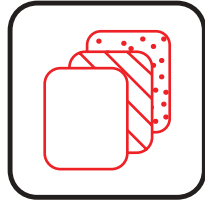






PRODUCT SPECIFICATIONS	
Yarn	NY6+™
Machine / Gauge	1/10 Loop Infinity
Tufted Weight(Oz)	18
Density	5,200 to 5,500
Total Thickness(mm)	5 to 6
Pile Thickness(mm)	3 to 3.5
Backing Type	Welspun Ecolite™
SPI	10
Size(cm)	Plank (25X100)

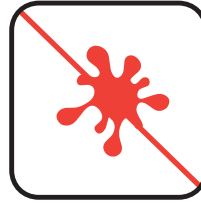
## WELSPUN CARPET TILES ADVANTAGES



Multiple Design Possibilities



Ideal For Heavy Foot Traffic



Stain Protect



Easy To Maintain



Easy To Install



Less Wastage During Installation



Fade Resistant

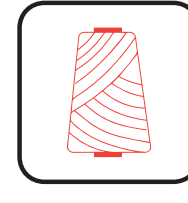


Made in India



Less Lead Time

## TRADEMARKS & TECHNOLOGIES



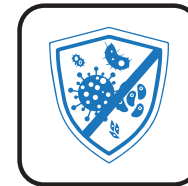
### NY6+™

For colors those don't fade out, Welspun Flooring's Ny6+™ is made up of a highly resilient fiber that is known for its superior color retention, strength, stain and fade resistance. With all this, your floor always retains its beauty come what may.



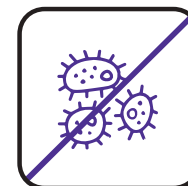
### Welspun Ecolite™

Welspun Ecolite™ is a lightweight backing that not only reduces the overall weight significantly, but ensures a 40% less environmental footprint than traditional carpets. Despite that, this backing retains the highest performance standards.



### HealthyFloor™ (Optional)

We also have carpet tile options with **antiviral property**. Tested and certified by ResInnova Labs, we are the first company in India to offer antiviral carpet tiles. It eliminates 99.68% of virus thanks to a special coating of silver ion and titanium oxide.



### GermiShield™

Health of our loved ones come first. To fight against these invisible forces of nature, these tiles come with innovative **GermiShield™**. This antimicrobial technology, restricts the growth of harmful germs or molds on the floor.



### Comfortile™ (Optional)

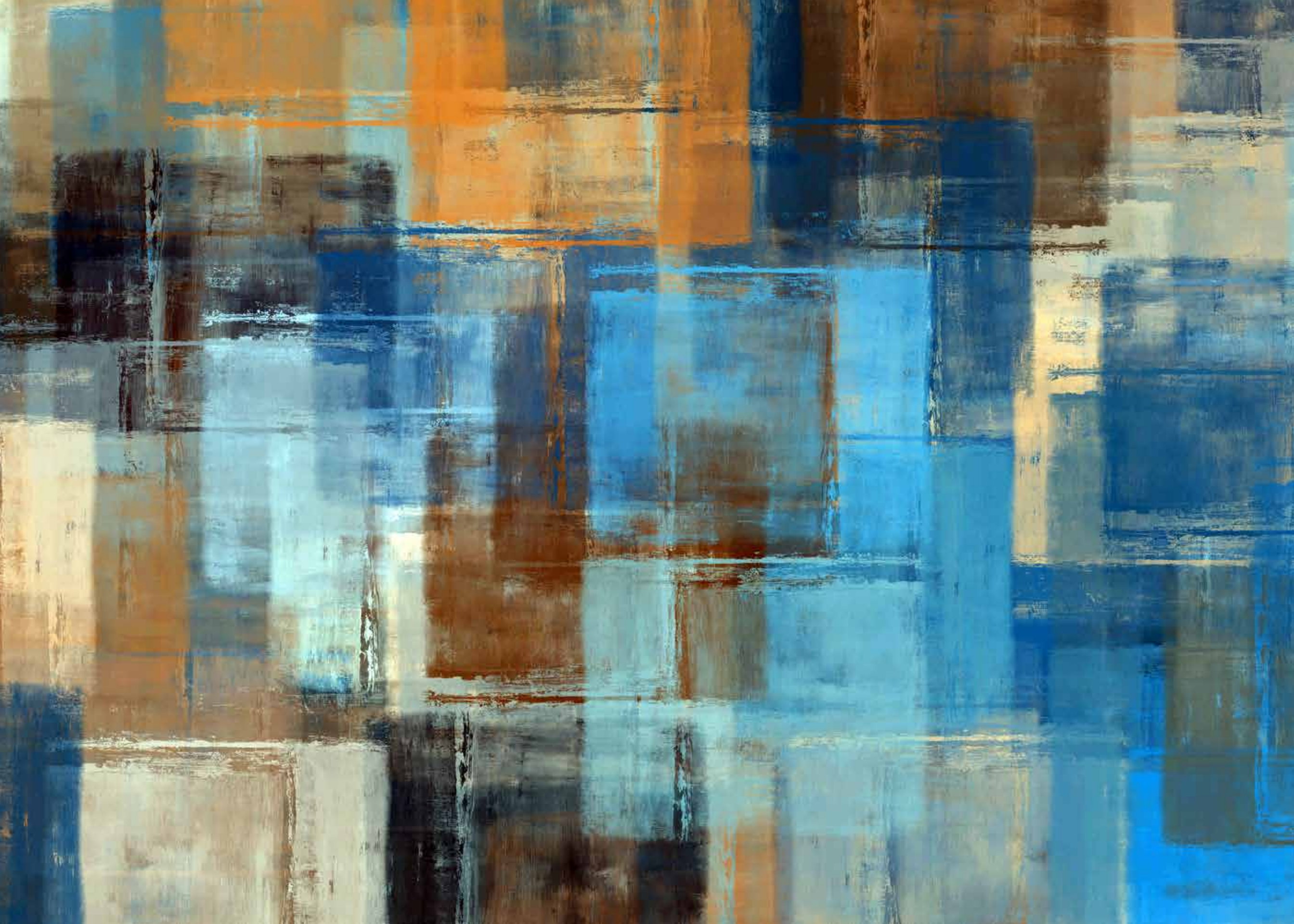
With Comfortile™ backing, our tiles come with a customized felt-back that not only offers great underfoot comfort, but also sound absorption. Comfortile™ provides extra levels of protection and support for high levels of acoustic and ergonomic support.

## TEST REPORT SUMMARY

Test Name	Method	Test Name	Method
Anti Microbial Treatment	AATCC 174 (Part II & III)	Colour fastness to bleach	AATCC 6
Delamination	ASTM D 3936	Static Electricity	AATCC 134-1996
Tuft Bind	ASTM 1335-67	Anti Static	ANSI/ESD S 7.1
Dimensional stability	ASTM D 7570	Castor Chair	DIN 54324
Pile weight	ASTM D 5848-07	Hexapod	ASTM D 5252-15
Pile density	ASTM D 5848-07	Static Coefficient	ASTM C 1028
Total thickness	ASTM D 6988-08	Dimensional stability (Aachen test)	DIN-STD-54318/ITTS-004
Pile height	ASTM D 5823-05a	Anti Soil	ASTM D 6540-05
Gauge	ASTM D 5793 - 13	Shampoo Fastness	AATCC 138
Tuft density	ASTM D 5848	Water Fastness	AATCC 107
Flammability (Pill Test)	ASTM D 2859	Velcro-Loops	ITTS 112
Flammability (Radiant Panel)	ASTM E 648-06	Heavy Traffic test (Walk test)	ASTM 6119-03
NBS Smoke Density (Flaming)	ASTM E 662-06	Sound transmission	ASTM C 423-17
Lightfastness	AATCC 16 E	Sound Absorption	ASTM C 423-17
Colour fastness to Ozone	AATCC 129	Static Loading	ISO 015/3415
Colour fastness to NO <sub>2</sub>	AATCC 164-2008	Green Carpet (VOC)	ASTM D 5116
Crocking Dry and Wet	AATCC 165-2008	Acoustic- Nylon	BS EN ISO 354
Stain fastness	AATCC 175-2008/ITTS 002	Thermal Resistance	ASTM C 518

## CERTIFICATIONS





# Thank You



**WELSPUN**  
FLOORING

---

To transform your flooring, just get in touch with us:

**Contact us:**

☎ 1800 120 1161

✉ [contact\\_flooring@welspun.com](mailto:contact_flooring@welspun.com)

**Address:**

Welspun Global Brands Ltd,  
Survey No 190, Chandanvelly, Near Hythabad, Shabad Mandal,  
Ranga Reddy District, Telangana 501503, India

[www.welspunflooring.com](http://www.welspunflooring.com)

\*Colors are indicative. Please refer actual product for exact color