



Aspen

Nature 20



WELSPUN
FLOORING



Nature 2.0

Designs that emulate nature are proven to inspire us and boost efficiency. In this fast paced city life, we spend very less time with nature and our connection seems to have weakened, but our need for natural spaces hasn't.

Designed to bring nature to your workplace, the Welspun Flooring Carpet Tile Nature 2.0 Collection infuses modern patterns with natural hues and textures to create earthy passages and sanctuaries that revitalise the body & mind.

A detailed close-up photograph of aspen tree bark. The bark is characterized by its deeply furrowed, vertically oriented ridges and grooves, creating a complex, layered texture. The color palette is natural and earthy, ranging from light tan and beige to dark, almost black, shadows within the crevices. The lighting is directional, highlighting the rough, fibrous surface and casting deep shadows that emphasize the three-dimensional quality of the bark's structure.

Aspen

Nature has always been an endless source of limitless textures and colour palettes. It is often in these spaces that the most natural, elegant and beautiful designs draw their inspiration from.

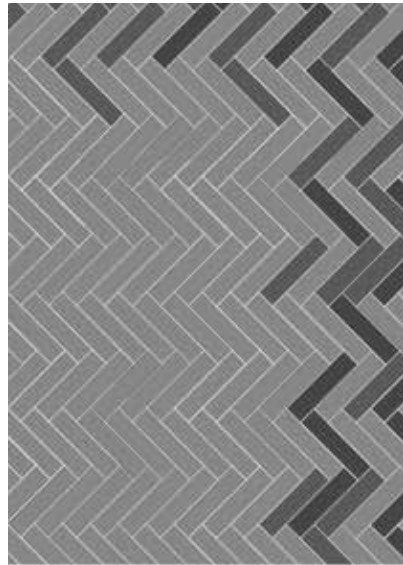
Aspen accentuates the inherent beauty of natural forms and manifests their magnificence in surprising ways by translating them into elevated patterns that look organic thanks to the unique raised stitch mechanism. The result is a masterpiece of a design that mimics the terrain of a crust of a tree trunk beautifully on your floor.



*Colors are indicative. Please refer actual product for exact color



ARTICLE CODE | COLOR
CT001284 | MERANTI
CT001293 | ARVE
CT001290 | MENARA



MERANTI | AC: CT001284

A



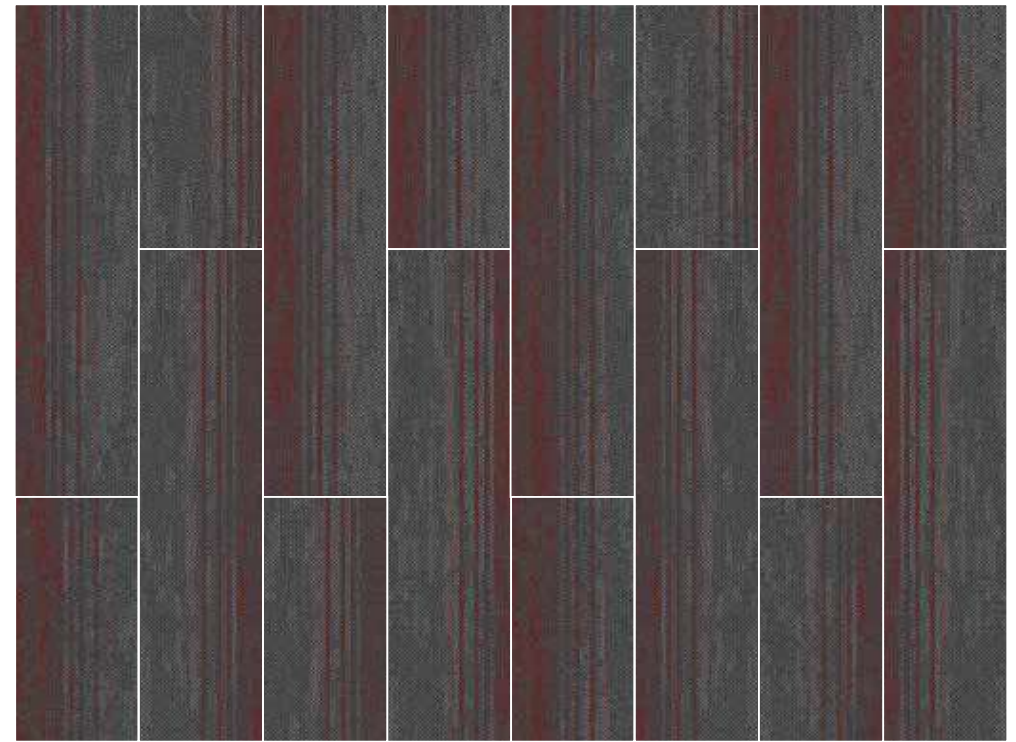
ARVE | AC: CT001293

B

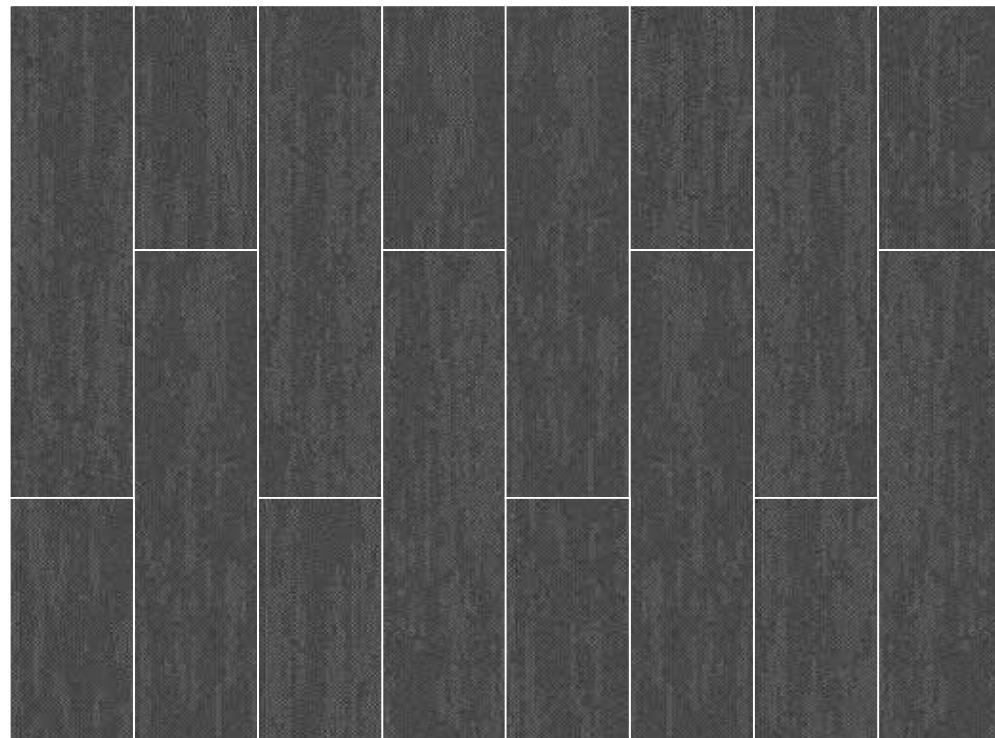


MENARA | AC: CT001290

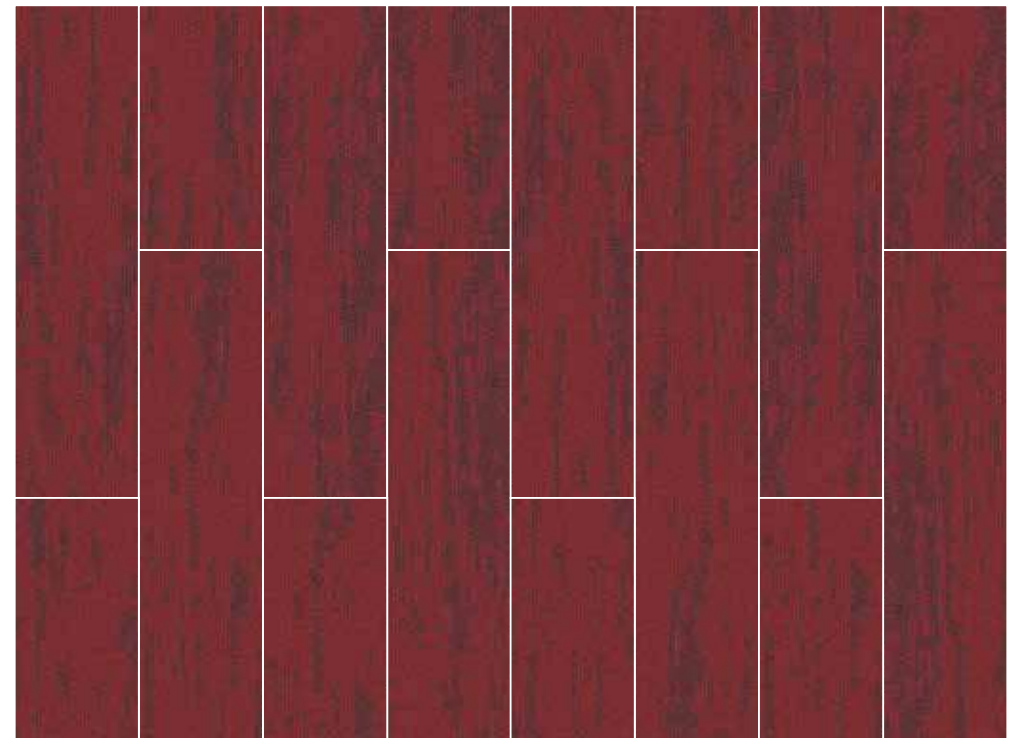
C



ARVE | AC: CT001293



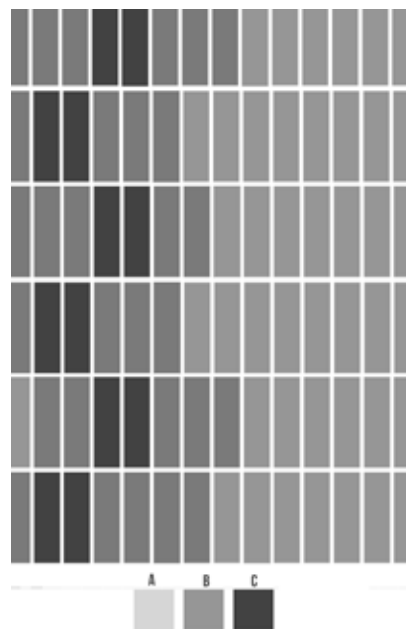
MENARA | AC: CT001290



MERANTI | AC: CT001284



ARTICLE CODE | COLOR
CT001287 | MANNA
CT001296 | KAURI
CT001290 | MENARA



A

MENARA | AC: CT001290



B

KAURI | AC: CT001296



C

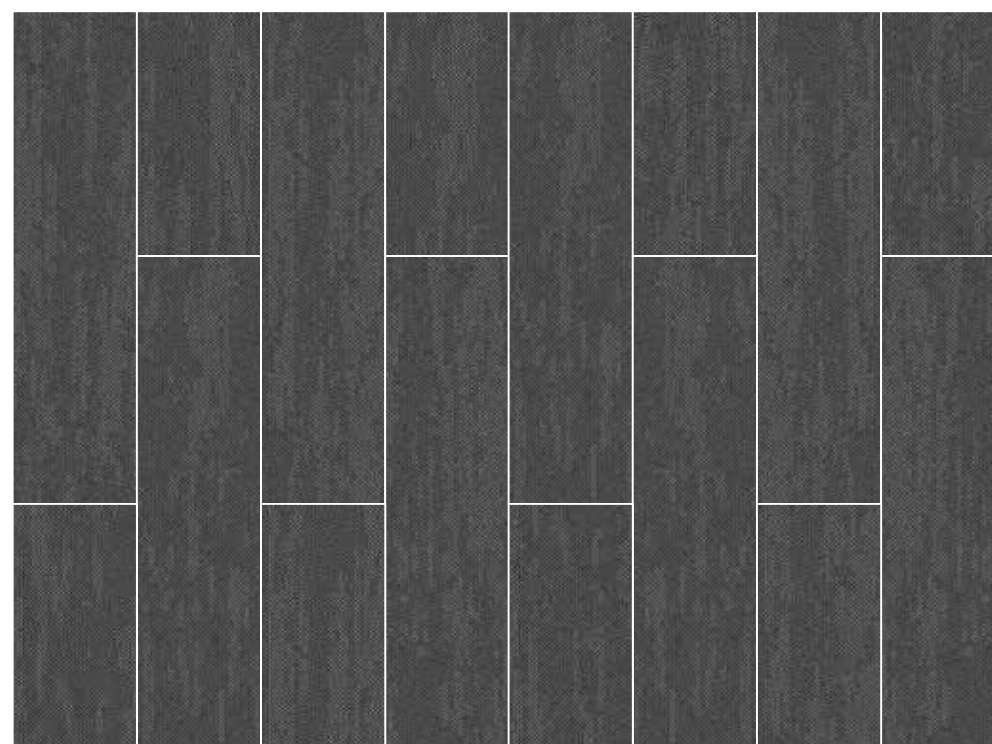
MANNA | AC: CT001287



KAURI | AC: CT001296



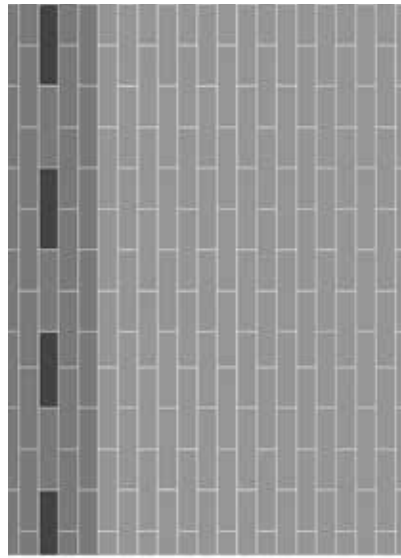
MANNA | AC: CT001287



MENARA | AC: CT001290



ARTICLE CODE | COLOR
CT001285 | DOUGLAS
CT001294 | PRARIE
CT001290 | MENARA



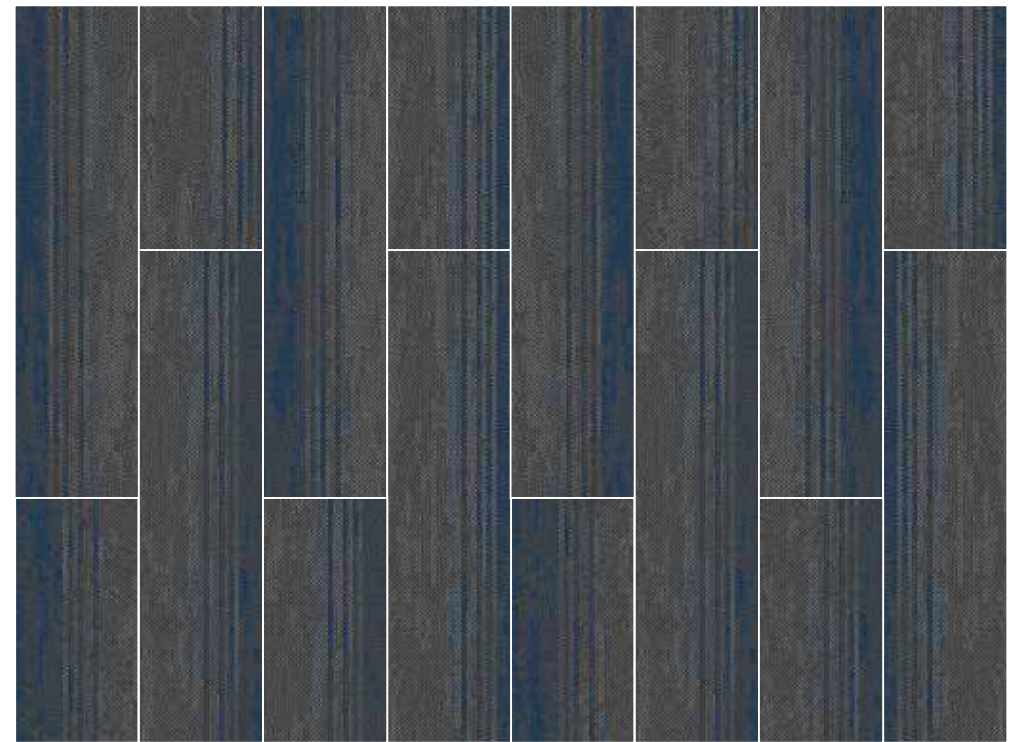
DOUGLAS | AC: CT001285



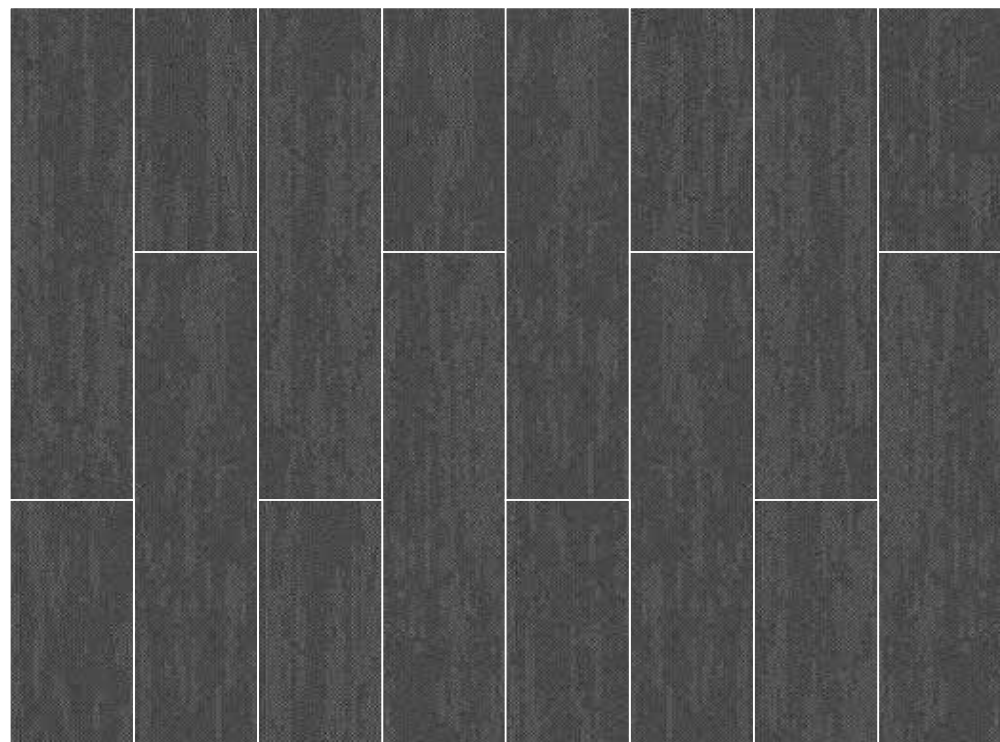
PRARIE | AC: CT001294



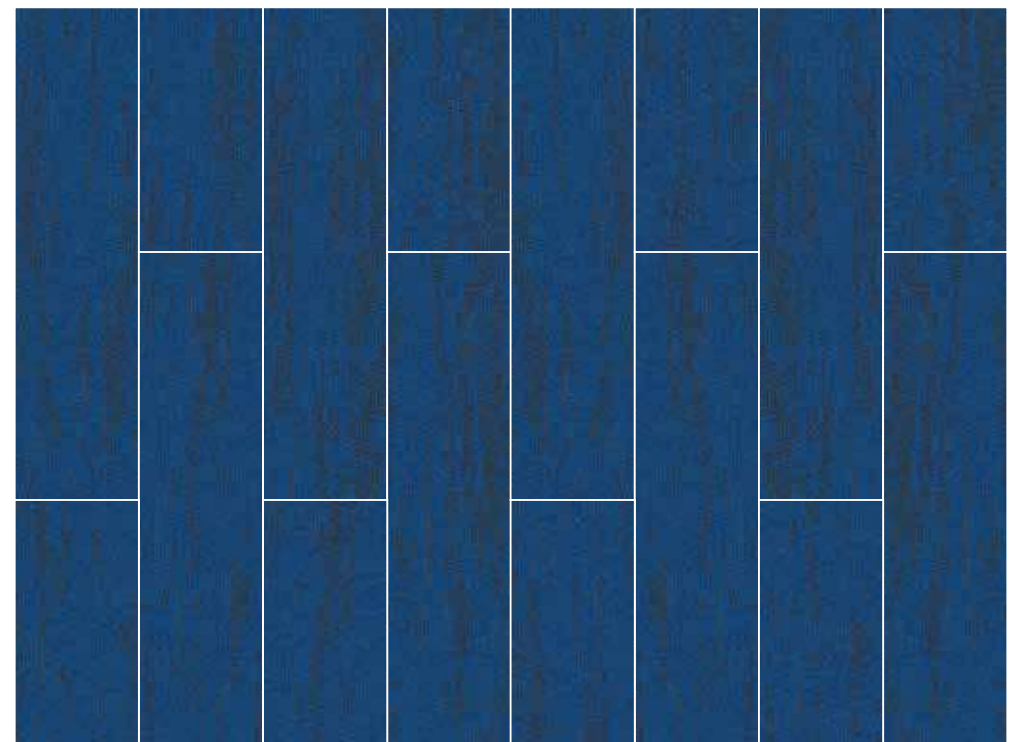
MENARA | AC: CT001290



PRARIE | AC: CT001294



MENARA | AC: CT001290



DOUGLAS | AC: CT001285



ARTICLE CODE	COLOR
CT001288	DINIZIA
CT001297	MONTEZUMA
CT001283	REDWOOD
CT001290	MENARA



DINIZIA | AC: CT001288



MONTEZUMA | AC: CT001297



REDWOOD | AC: CT001283



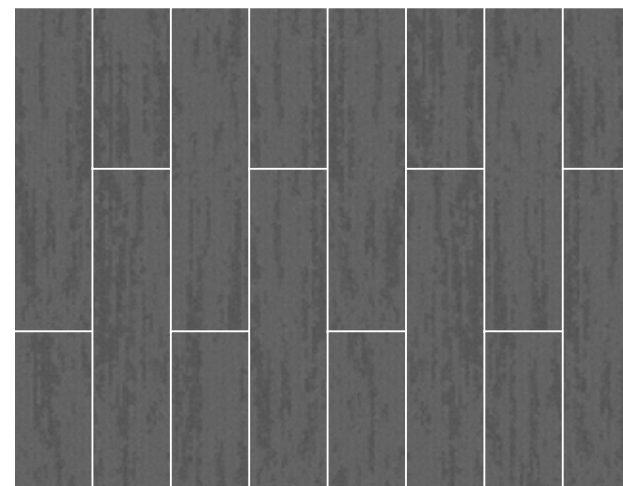
MENARA | AC: CT001290

A

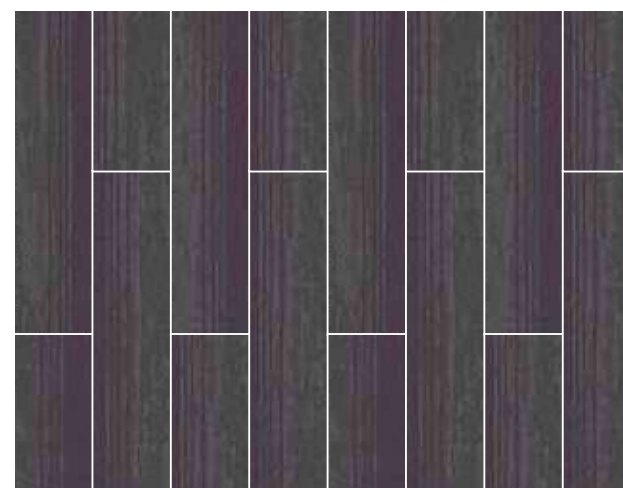
B

C

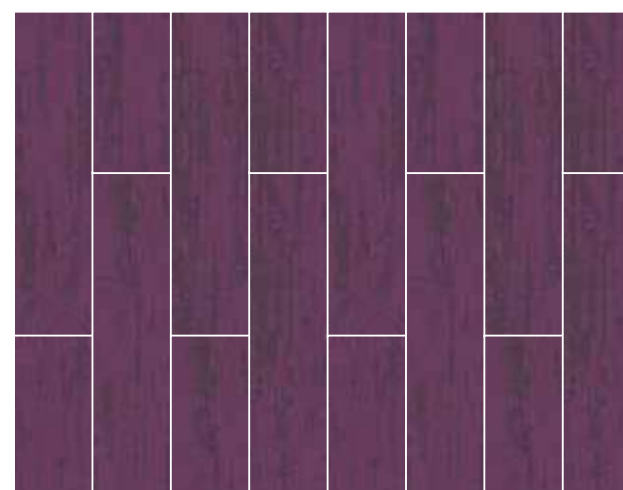
D



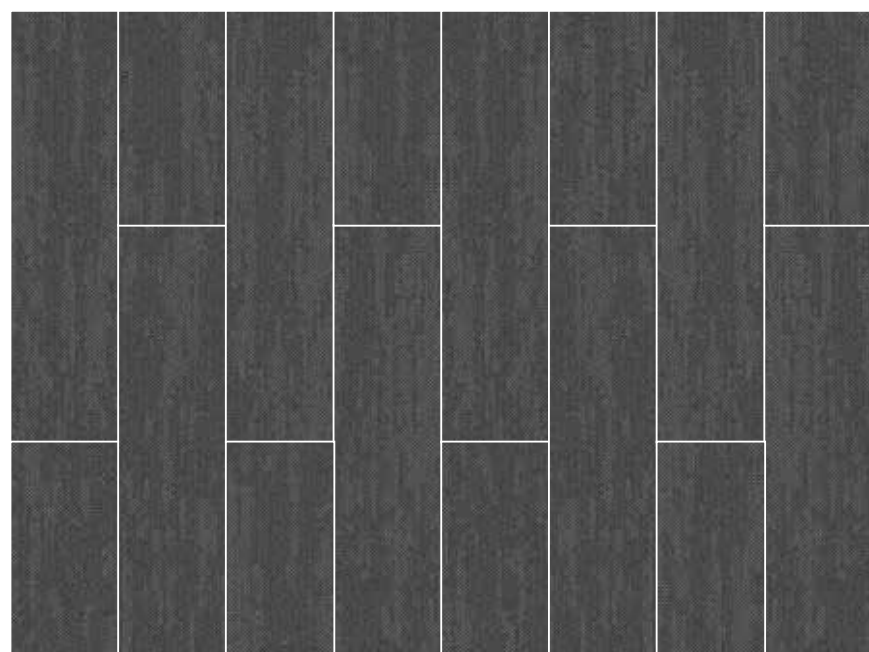
REDWOOD | AC: CT001283



MONTEZUMA | AC: CT001297



DINIZIA | AC: CT001288



MENARA | AC: CT001290



ARTICLE CODE | COLOR
CT001287 | MANNA
CT001296 | KAURI
CT001290 | MENARA



MANNA | AC: CT001287

A



KAURI | AC: CT001296

B

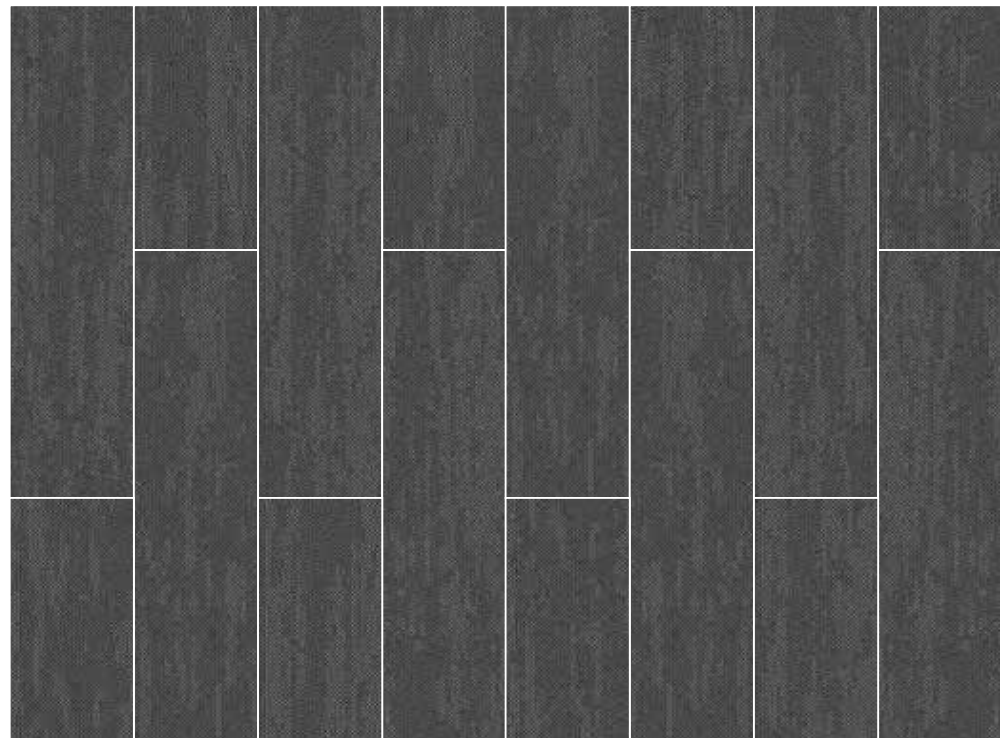


MENARA | AC: CT001290

C



KAURI | AC: CT001296



MENARA | AC: CT001290



MANNA | AC: CT001287



ARTICLE CODE | COLOR
CT001286 | SITKA
CT001295 | TASMANIA
CT001283 | REDWOOD
CT001290 | MENARA



SITKA | AC: CT001286



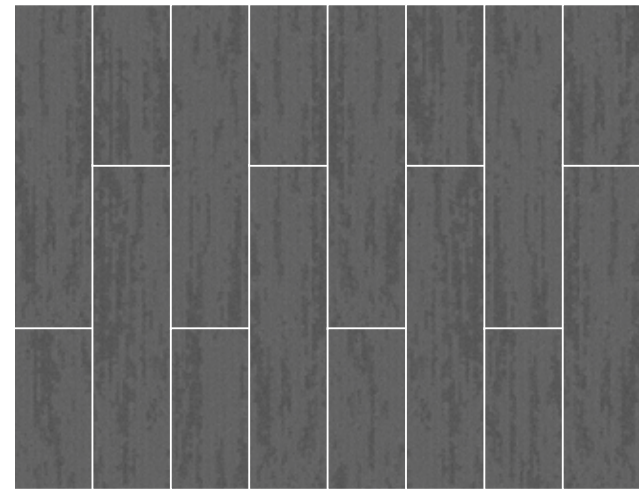
TASMANIA | AC: CT001295



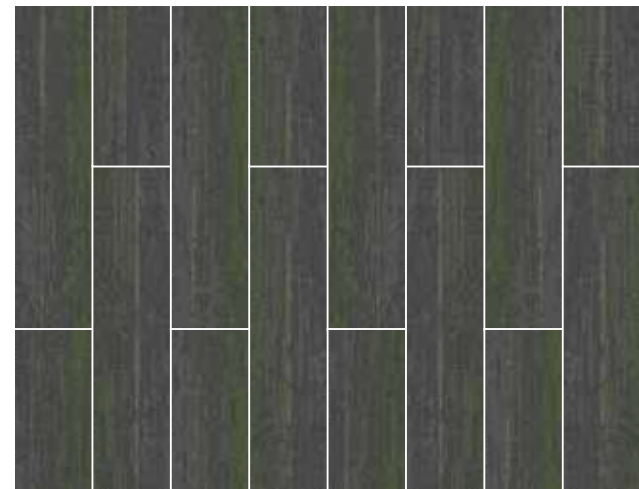
REDWOOD | AC: CT001283



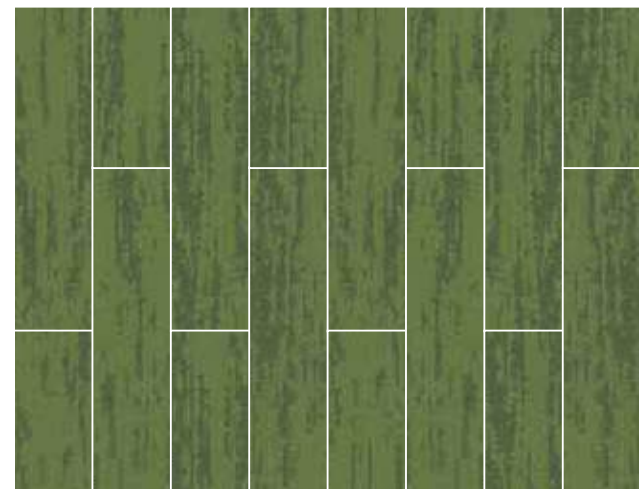
MENARA | AC: CT001290



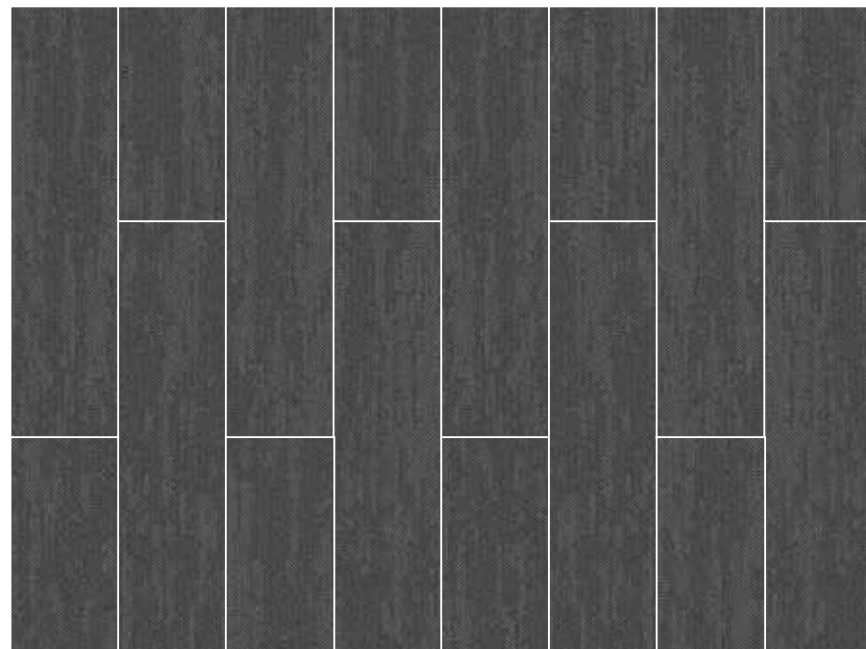
REDWOOD | AC: CT001283



TASMANIA | AC: CT001295



SITKA | AC: CT001286

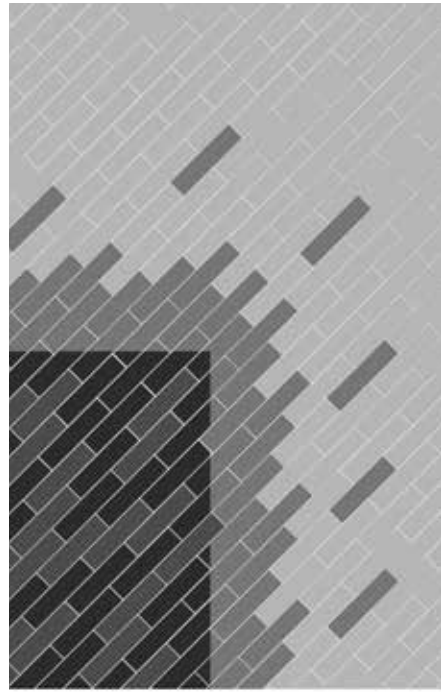


MENARA | AC: CT001290

1:38
Friday, August 26

WELSPUN
Flooring

ARTICLE CODE | COLOR
CT001285 | DOUGLAS
CT001291 | CENTURIAN
CT001294 | PRARIE
CT001290 | MENARA



A

DOUGLAS | AC: CT001285



B

PRARIE | AC: CT001294



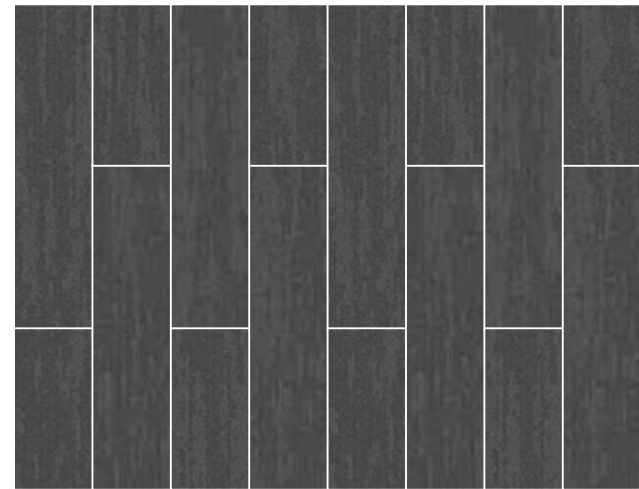
C

MENARA | AC: CT001290

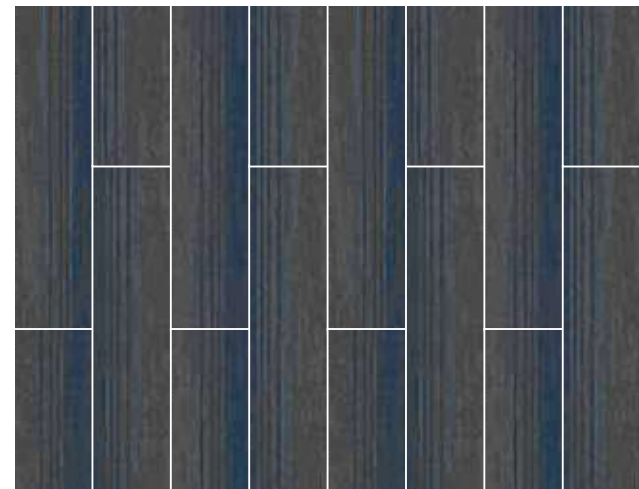


D

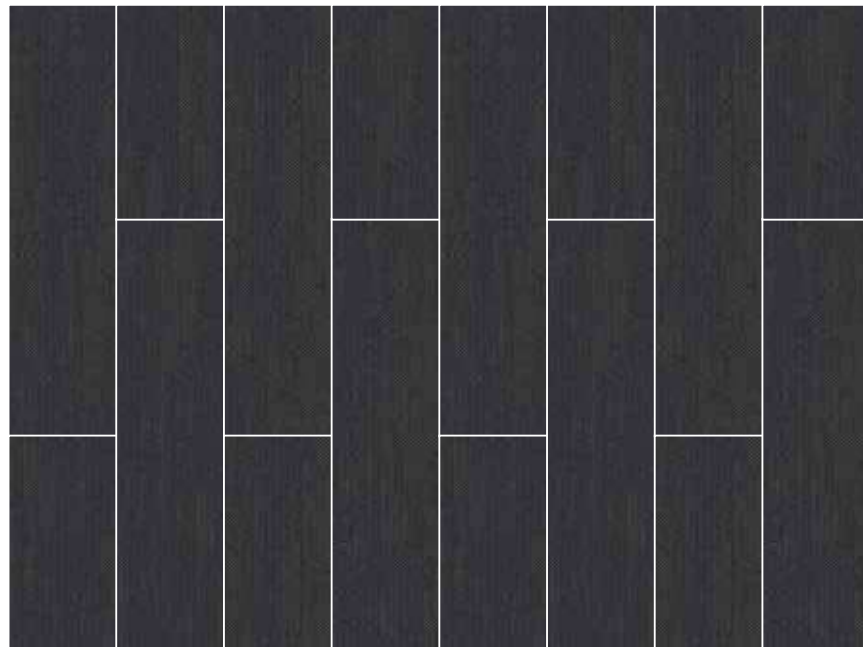
CENTURIAN | AC: CT001291



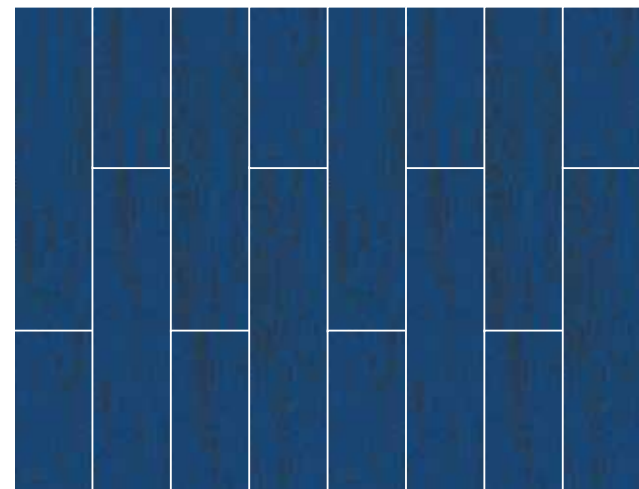
MENARA | AC: CT001290



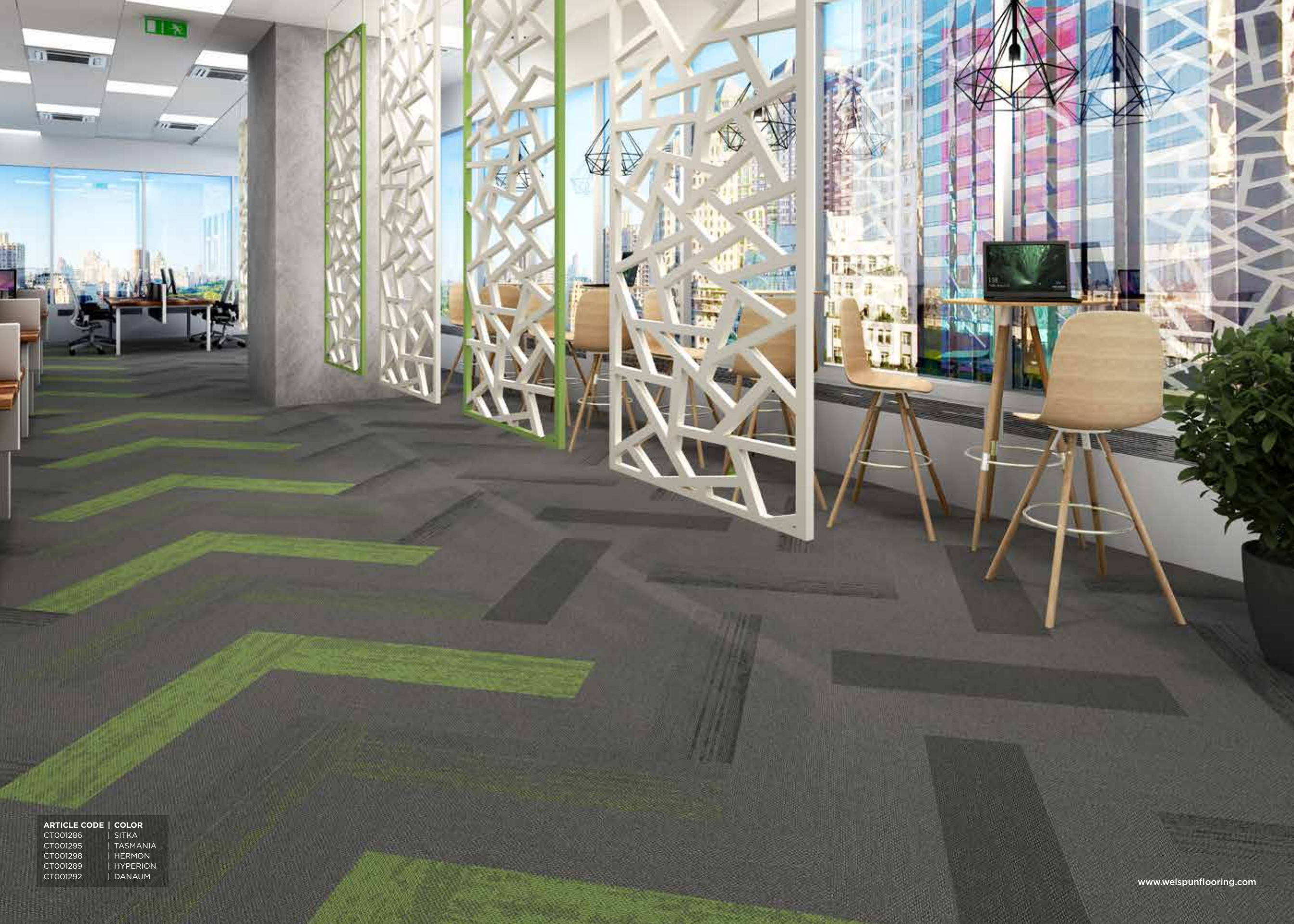
PRARIE | AC: CT001294



CENTURIAN | AC: CT001291



DOUGLAS | AC: CT001285



ARTICLE CODE | COLOR
CT001286 | SITKA
CT001295 | TASMANIA
CT001298 | HERMON
CT001289 | HYPERION
CT001292 | DANAUM



SITKA | AC: CT001286

A



TASMANIA | AC: CT001295

B



DANAUM | AC: CT001292

C



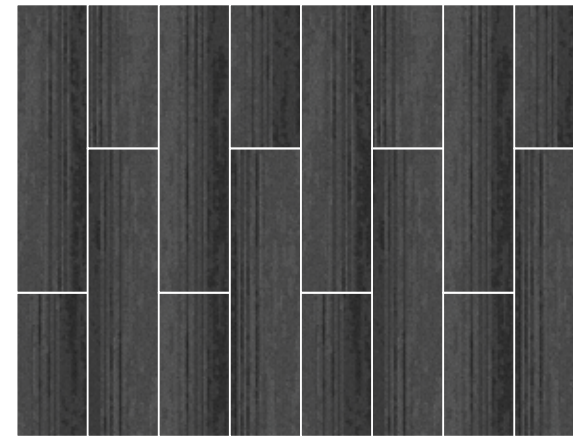
HERMON | AC: CT001298

D

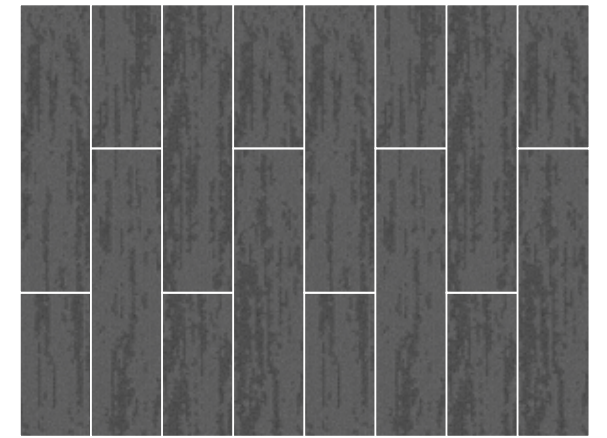


HYPERION | AC: CT001289

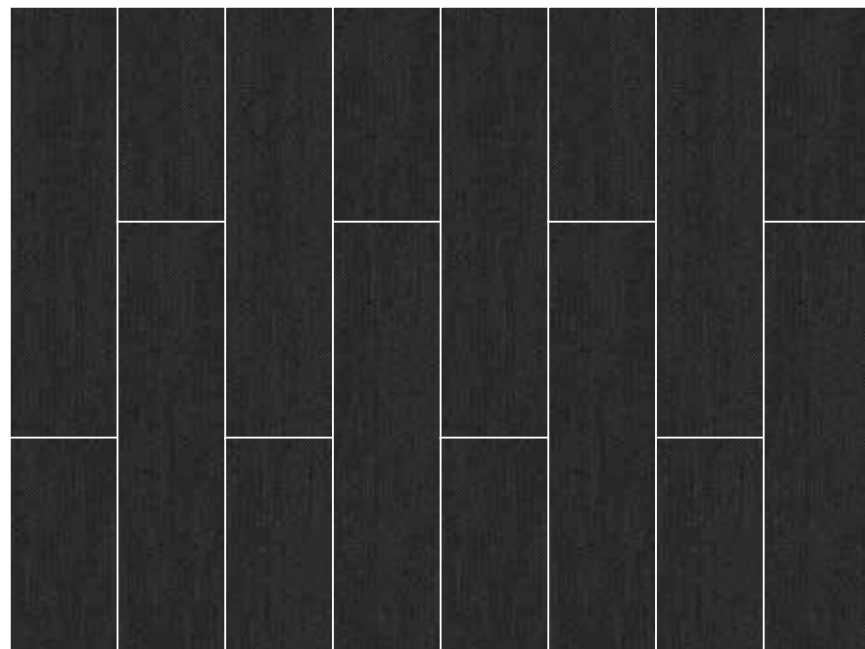
E



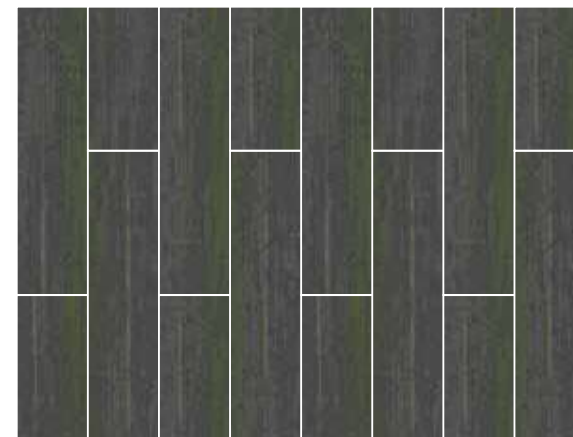
HERMON | AC: CT001298



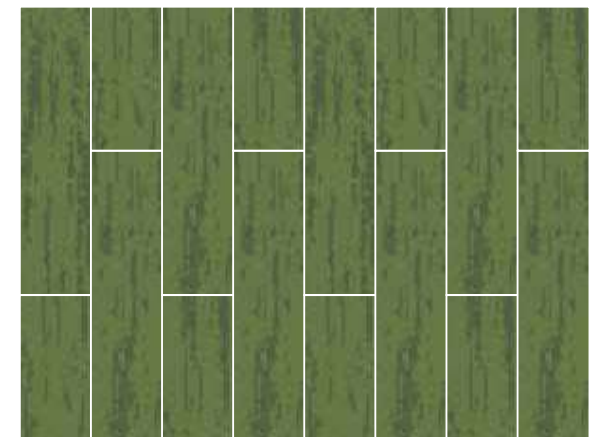
DANAUM | AC: CT001292



HYPERION | AC: CT001289



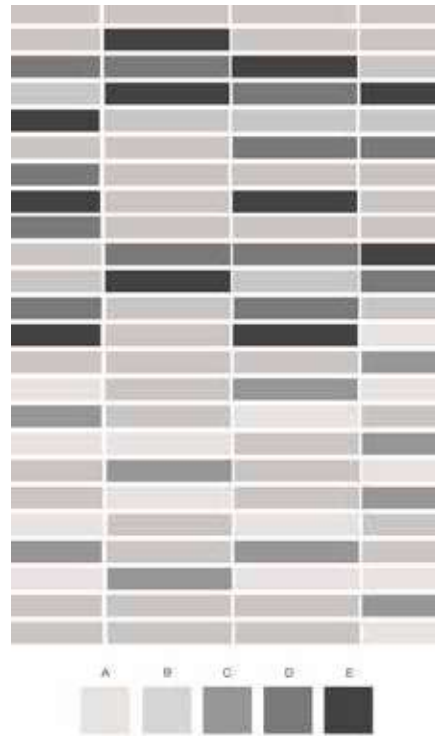
TASMANIA | AC: CT001295



SITKA | AC: CT001286



ARTICLE CODE | COLOR
CT001284 | MERANTI
CT001293 | ARVE
CT001291 | CENTURIAN
CT001290 | MENARA
CT001298 | HERMON



MERANTI | AC: CT001284



ARVE | AC: CT001293



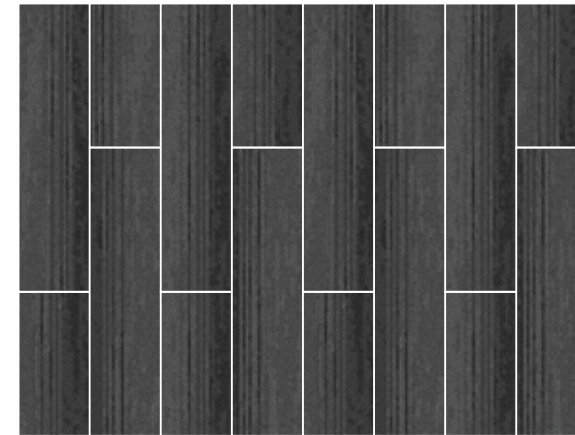
MENARA | AC: CT001290



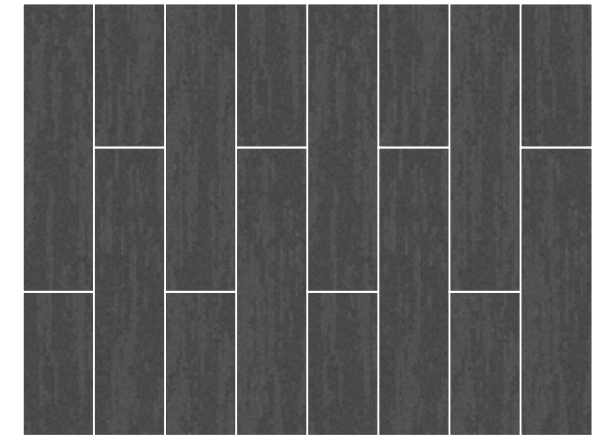
HERMON | AC: CT001298



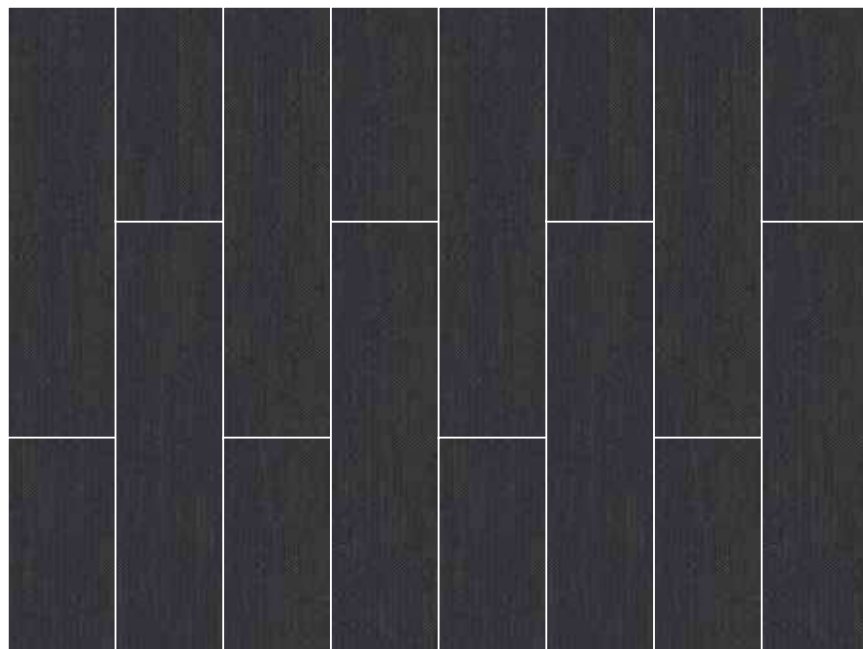
CENTURIAN | AC: CT001291



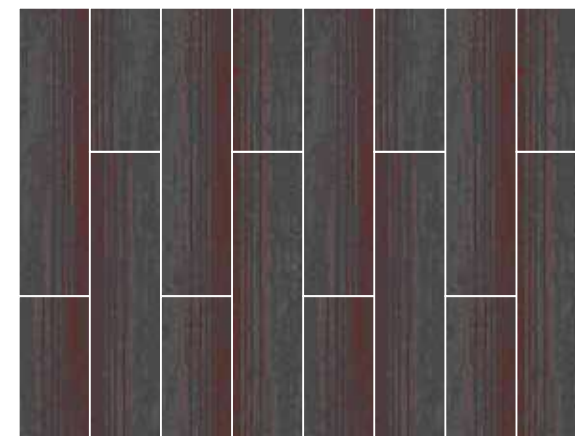
HERMON | AC: CT001298



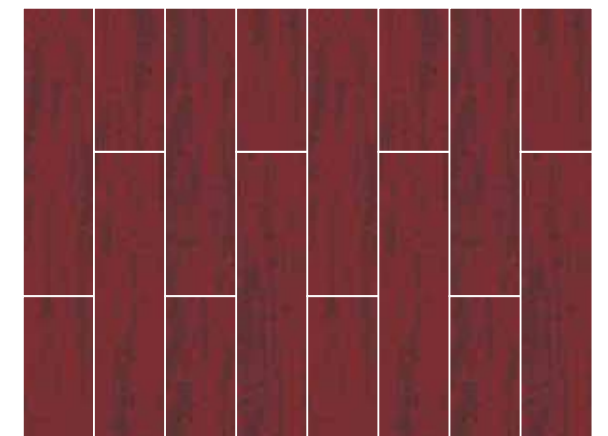
MENARA | AC: CT001290



CENTURIAN | AC: CT001291



ARVE | AC: CT001293



MERANTI | AC: CT001284



ARTICLE CODE | COLOR
CT001289 | HYPERION
CT001298 | HERMON
CT001290 | MENARA



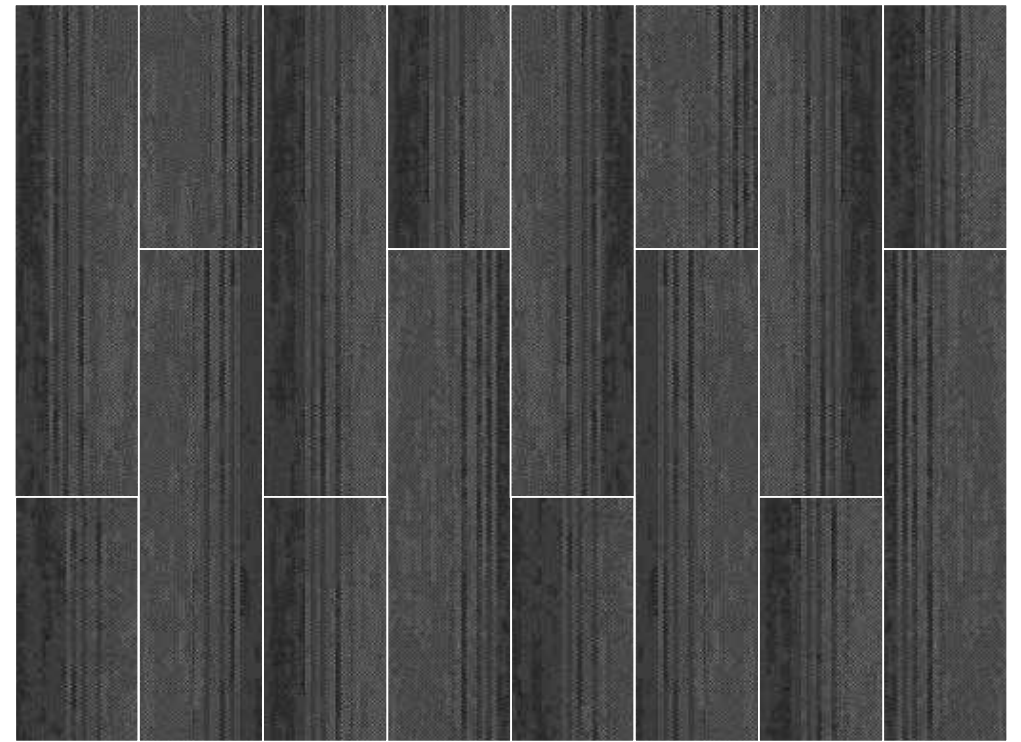
HYPERION | AC: CT001289



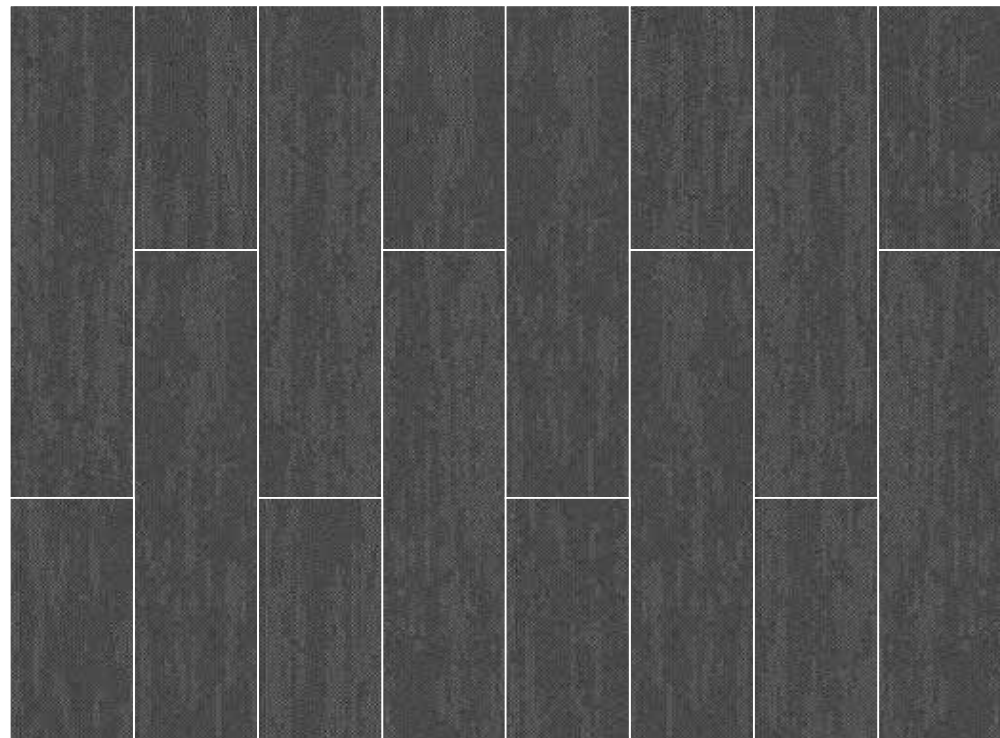
HERMON | AC: CT001298



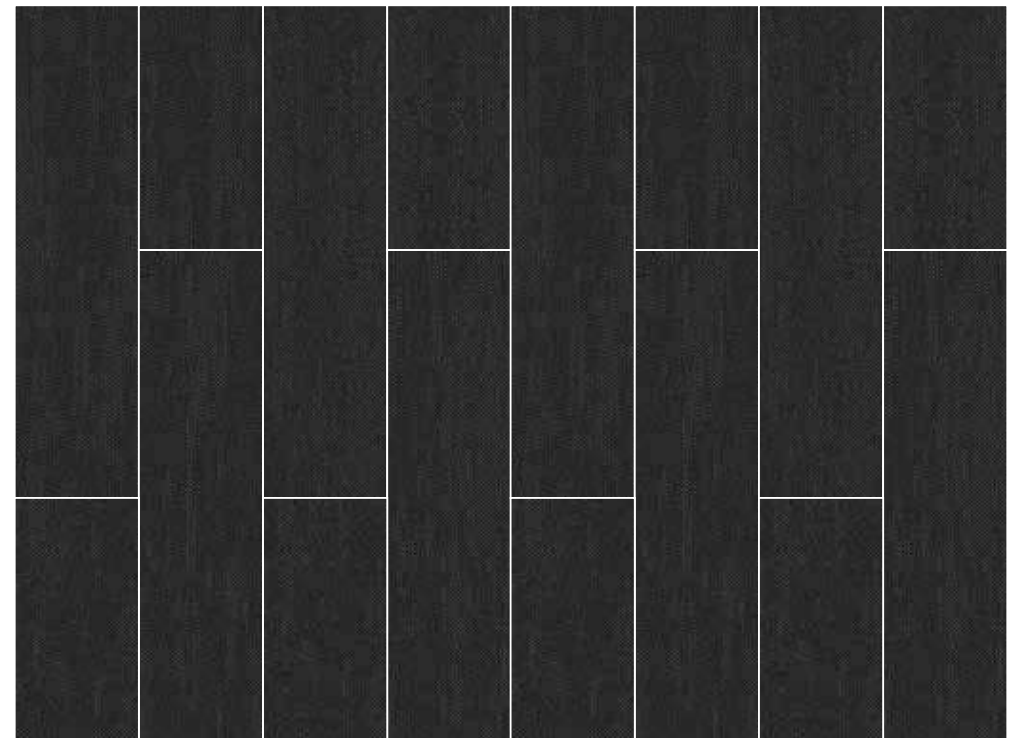
MENARA | AC: CT001290



HERMON | AC: CT001298



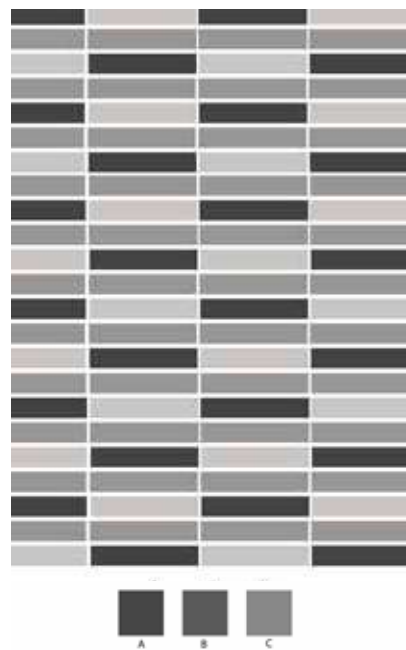
MENARA | AC: CT001290



HYPERION | AC: CT001289



ARTICLE CODE | COLOR
CT001292 | DANAUM
CT001298 | HERMON
CT001290 | MENARA



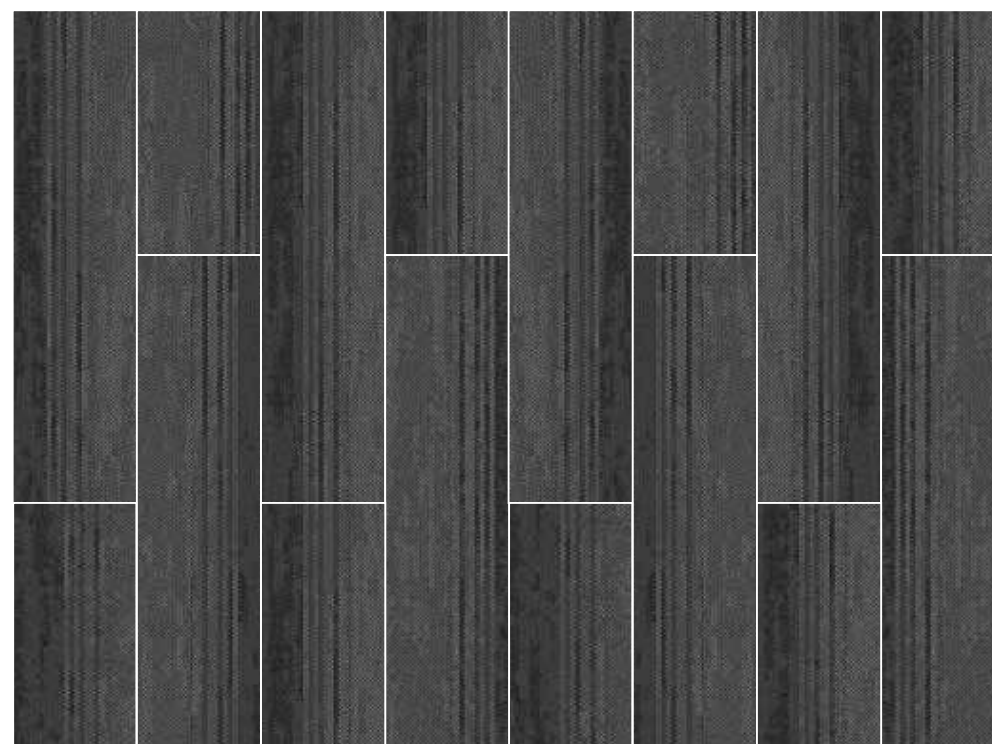
MENARA | AC: CT001290



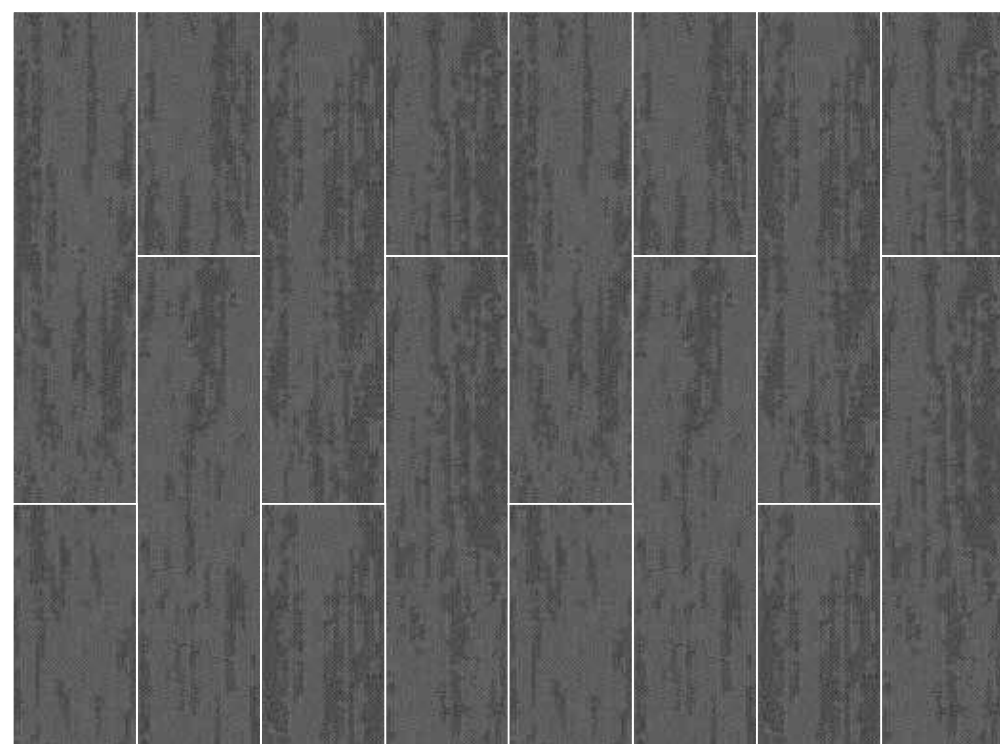
HERMON | AC: CT001298



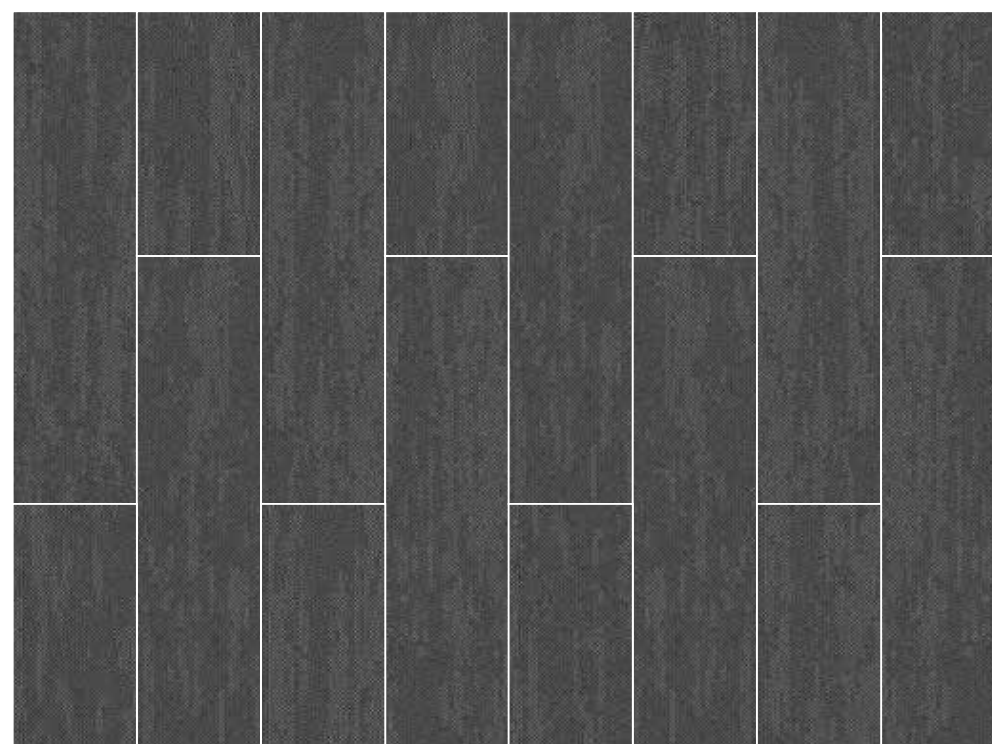
DANAUM | AC: CT001292



HERMON | AC: CT001298



DANAUM | AC: CT001292



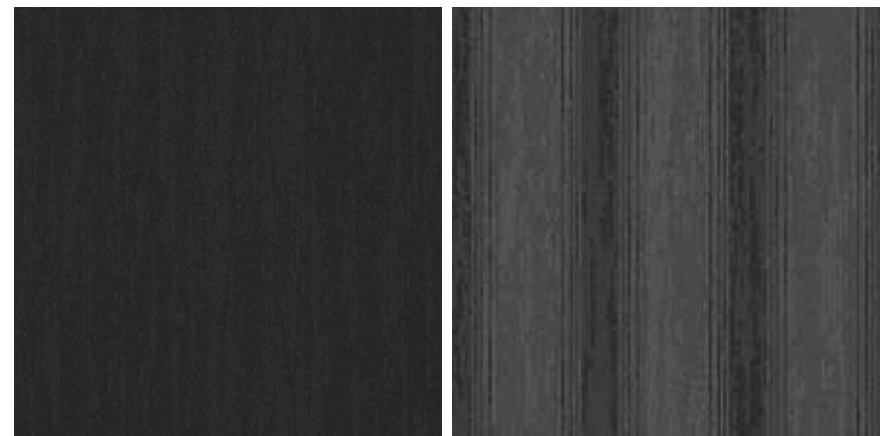
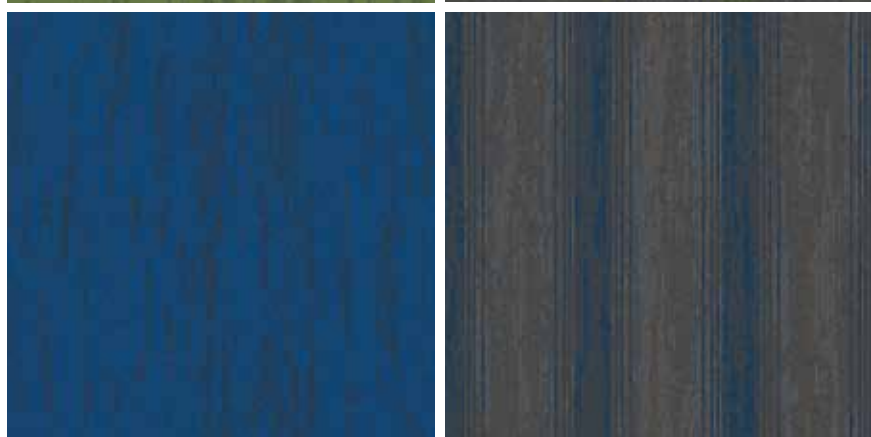
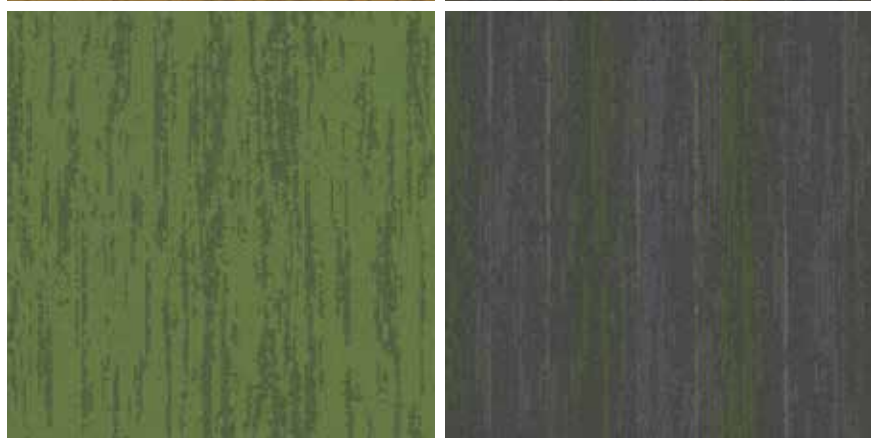
MENARA | AC: CT001290



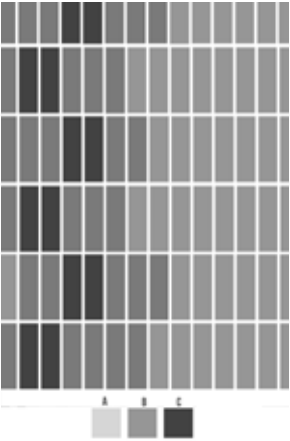
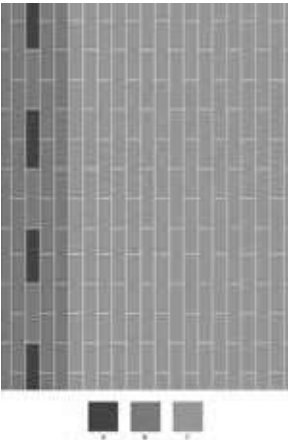
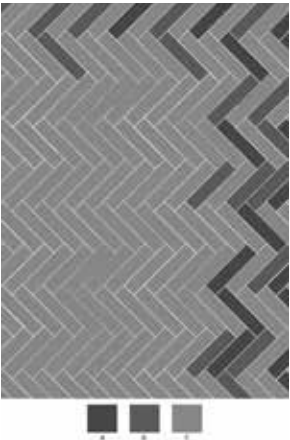
ARTICLE CODE	COLOR
CT001293	ARVE
CT001294	PRARIE
CT001295	TASMANIA
CT001296	KAURI
CT001284	MERANTI
CT001285	ADOUGLAS
CT001286	SITKA
CT001287	MANNA
CT001297	MONTEZUMA
CT001298	HERMON
CT001290	MENARA
CT001288	DINIZIA

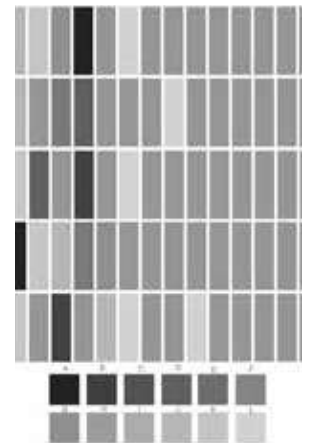
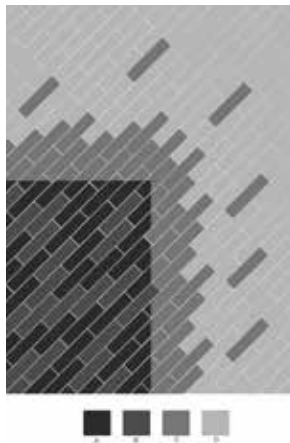
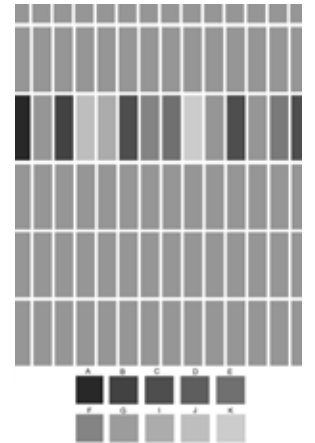
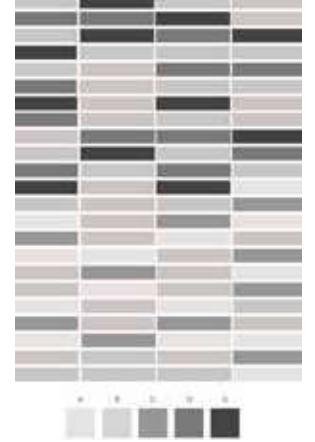


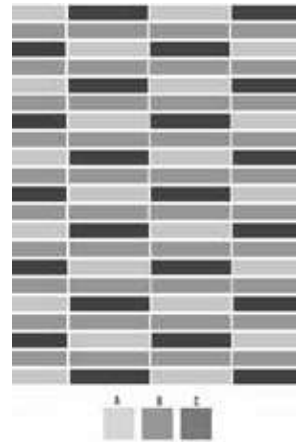
ARTICLE CODE	COLOR
CT001293	ARVE
CT001294	PRARIE
CT001295	TASMANIA
CT001296	KAURI
CT001284	MERANTI
CT001285	DOUGLAS
CT001286	SITKA
CT001287	MANNA
CT001290	MENARA
CT001283	REDWOOD



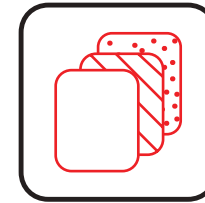
LAYING PATTERNS







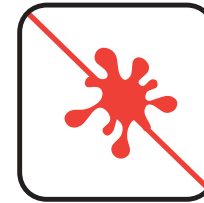
WELSPUN CARPET TILES ADVANTAGES



Multiple Design Possibilities



Ideal For Heavy Foot Traffic



Stain Protect



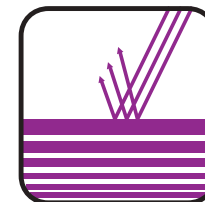
Easy To Maintain



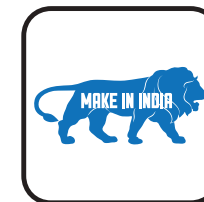
Easy To Install



Less Wastage During Installation



Fade Resistant



Made in India

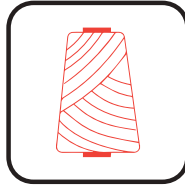


Less Lead Time

PRODUCT SPECIFICATIONS

Yarn	NY6+™
Machine / Gauge	1/10 Loop Infinity
Tufted Weight(Oz)	18
Density	5,200 to 5,500
Total Thickness(mm)	5 to 6
Pile Thickness(mm)	2.5 to 3
Backing Type	Welspun Ecolite™
SPI	10
Size(cm)	Plank (25X100)

TRADEMARKS & TECHNOLOGIES



NY6+™

For colors those don't fade out, Welspun Flooring's Ny6+™ is made up of a highly resilient fiber that is known for its superior color retention, strength, stain and fade resistance. With all this, your floor always retains its beauty come what may.



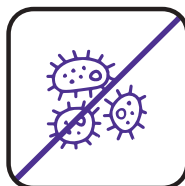
Welspun Ecolite™

Welspun Ecolite™ is a lightweight backing that not only reduces the overall weight significantly, but ensures a 40% less environmental footprint than traditional carpets. Despite that, this backing retains the highest performance standards.



HealthyFloor™ (Optional)

We also have carpet tile options with **antiviral property**. Tested and certified by ResInnova Labs, we are the first company in India to offer antiviral carpet tiles. It eliminates 99.68% of virus thanks to a special coating of silver ion and titanium oxide.



GermiShield™

Health of our loved ones come first. To fight against these invisible forces of nature, these tiles come with innovative **GermiShield™**. This antimicrobial technology, restricts the growth of harmful germs or molds on the floor.



Comfortile™ (Optional)

With Comfortile™ backing, our tiles come with a customized felt-back that not only offers great underfoot comfort, but also sound absorption. Comfortile™ provides extra levels of protection and support for high levels of acoustic and ergonomic support.

TEST REPORT SUMMARY

Test Name	Method	Test Name	Method
Anti Microbial Treatment	AATCC 174 (Part II & III)	Colour fastness to bleach	AATCC 6
Delamination	ASTM D 3936	Static Electricity	AATCC 134-1996
Tuft Bind	ASTM 1335-67	Anti Static	ANSI/ESD S 7.1
Dimensional stability	ASTM D 7570	Castor Chair	DIN 54324
Pile weight	ASTM D 5848-07	Hexapod	ASTM D 5252-15
Pile density	ASTM D 5848-07	Static Coefficient	ASTM C 1028
Total thickness	ASTM D 6988-08	Dimensional stability (Aachen test)	DIN-STD-54318/ITTS-004
Pile height	ASTM D 5823-05a	Anti Soil	ASTM D 6540-05
Gauge	ASTM D 5793 - 13	Shampoo Fastness	AATCC 138
Tuft density	ASTM D 5848	Water Fastness	AATCC 107
Flammability (Pill Test)	ASTM D 2859	Velcro-Loops	ITTS 112
Flammability (Radiant Panel)	ASTM E 648-06	Heavy Traffic test (Walk test)	ASTM 6119-03
NBS Smoke Density (Flaming)	ASTM E 662-06	Sound transmission	ASTM C 423-17
Lightfastness	AATCC 16 E	Sound Absorption	ASTM C 423-17
Colour fastness to Ozone	AATCC 129	Static Loading	ISO 015/3415
Colour fastness to NO ₂	AATCC 164-2008	Green Carpet (VOC)	ASTM D 5116
Crocking Dry and Wet	AATCC 165-2008	Acoustic- Nylon	BS EN ISO 354
Stain fastness	AATCC 175-2008/ITTS 002	Thermal Resistance	ASTM C 518

CERTIFICATIONS





Thank You



WELSPUN
FLOORING

To transform your flooring, just get in touch with us:

Contact us:

☎ 1800 120 1161

✉ contact_flooring@welspun.com

Address:

Welspun Global Brands Ltd,
Survey No 190, Chandanvelly, Near Hythabad, Shabad Mandal,
Ranga Reddy District, Telangana 501503, India

www.welspunflooring.com

*Colors are indicative. Please refer actual product for exact color